

RESEARCH

Open Access

# Monoclonal antibody 10A5 recognizes an antigen unique to the water-insoluble 25/45 membrane fraction of the rat ocular lens

Joseph K Whitman<sup>1</sup>, Abigail F Alviar<sup>2</sup>, Charles R Fleschner<sup>3</sup> and Melissa K Stuart<sup>4\*</sup>

## Abstract

The water-insoluble 25/45 fraction and non-sedimenting membrane fraction (NSMF) are two membrane preparations isolated from the ocular lens. The fractions are postulated to represent distinct subdomains of the lens with unique functions. However, attempts to distinguish between the two fractions by detecting proteins present in one fraction but absent from other have been unsuccessful. In this study, we exploited the ability of the mouse immune system to detect antigenic differences between the 25/45 fraction and NSMF isolated from the lenses of 20-day-old rats. We generated a monoclonal antibody (MAb 10A5) that reacts with a ganglioside-like antigen that is present in the 25/45 fraction but absent from the NSMF. Restriction of the antigen to the 25/45 fraction in 20-day-old animals supports the hypothesis that the 25/45 fraction and NSMF represent different subdomains within the ocular lens.

**Keywords:** Ocular lens; Plasma membrane domains; Monoclonal antibodies; Gangliosides

## Background

The lens fiber cell plasma membrane is organized into subdomains of clustered macromolecules that differ in composition from the majority of the bilayer (Raguz et al. 2008). Such domains include adhesive structures (cellular synapses, substrate adhesions, and fiber cell junctions), membrane invaginations (clathrin-coated pits and caveolae), and less well-defined domains such as cholesterol-rich lipid rafts and lectin-glycoprotein lattices (Lajoie et al. 2009). The varied composition of the domains facilitate unique functions. Lens fiber junctions, which contain proteins called connexins, maintain homeostasis within the fiber cells by facilitating the transfer of water, ions, and low molecular weight compounds between adjacent, communicating cells (Fleschner and Cenedella 1991). Caveolae play roles in lipid transport, endocytosis, signal transduction, and cell transformation (Perdue and Yan 2006). Cholesterol crystalline domains are essential for maintaining lens transparency (Borchman

et al. 1996; Jacob et al. 1999, 2001), most likely by interfering with cataractogenic aggregation of  $\alpha$ -crystallin at the membrane surface (Tang et al. 1998).

In a previous study, Fleschner and Cenedella (1993) described the isolation of a non-sedimenting membrane fraction (NSMF) from the water-soluble fraction (WSF) of bovine lens. The NSMF differed in several regards from the water-insoluble sedimenting membrane fraction (SMF): the NSMF contained fewer fiber junction structures, a greater amount of total lipid relative to total membrane protein, and less cholesterol relative to phospholipid than the SMF. In a follow-up study, it was shown that the NSMF contained a greater concentration of triacylglycerol than the SMF, and that there was an inverse relationship between membrane cholesterol and triacylglycerol content (Fleschner and Cenedella 1997). It was suggested that triacylglycerol-rich domains might exist as oily pools to allow diffusion of lipophilic molecules, thus providing a transport mechanism across fiber cell plasma membranes with diminished transport activities (May et al. 1986; Fleschner and Cenedella 1993).

More recently, an additional lens membrane preparation that we call the "25/45 fraction" was isolated. Like the SMF, the 25/45 fraction is hypothesized to be distinct

\* Correspondence: mstuart@atsu.edu

<sup>4</sup>Department of Microbiology/Immunology, A T Still University, Kirksville College of Osteopathic Medicine, 800 W Jefferson St, Kirksville, MO 63501, USA

Full list of author information is available at the end of the article

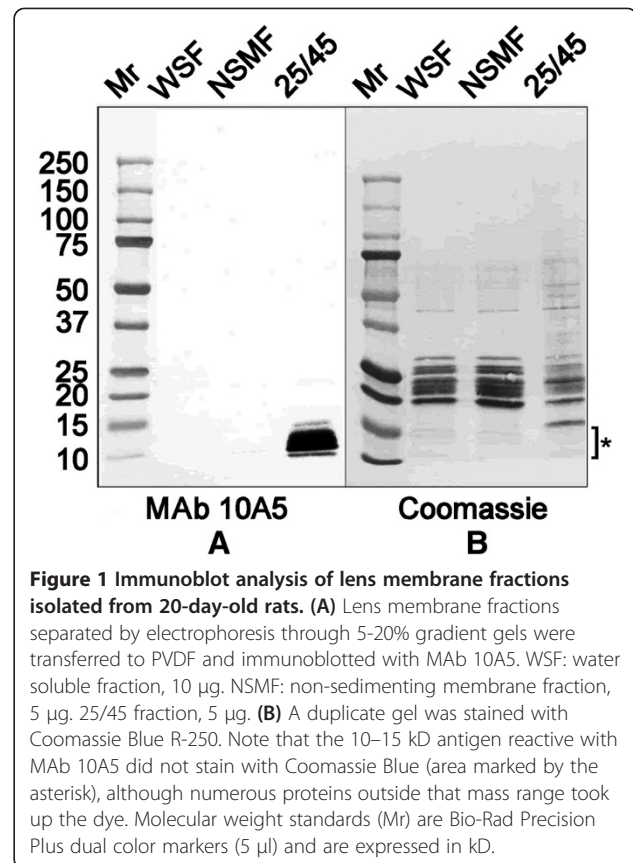
from the NSMF. The 25/45 fraction is prepared by homogenizing lenses in aqueous buffer without chaotropic agents, sedimenting the water-insoluble fraction, and then subjecting the water-insoluble fraction to ultracentrifugation through a discontinuous sucrose density gradient (Fleschner 1998). The 25/45 fraction is so-called because it is isolated from the interface between 25% and 45% sucrose. The 25/45 fraction contains the full complement of extrinsic (8 M urea-soluble) proteins found in the lens "native" plasma membrane in vivo (Cenedella and Fleschner 1992). Crystallins account for approximately 90% of the extrinsic protein, with the remainder comprising cytoskeletal and other proteins (Cenedella and Fleschner 1992). A comparison of the cytoskeletal components vimentin, phakinin, and filensin in the NSMF and 25/45 fractions showed that these proteins differed quantitatively but not qualitatively between the two membrane fractions in both bovine and rat lenses (Fleschner 1998, 2002).

Because prior studies did not reveal proteins uniquely associated with the 25/45 fraction or NSMF, we undertook the current investigation to determine whether antigenic differences could be detected using monoclonal antibodies raised separately to the 25/45 fraction and NSMF isolated from 20-day-old rats. Our goal was to reveal additional differences between the two membrane fractions to support the hypothesis that the 25/45 fraction and NSMF represent distinct lens subdomains. Here we describe the production of a monoclonal antibody (MAB 10A5) specific for an antigen that in 20-day-old rats is restricted to the 25/45 fraction. The antigen appears to be biochemically related to the gangliosides.

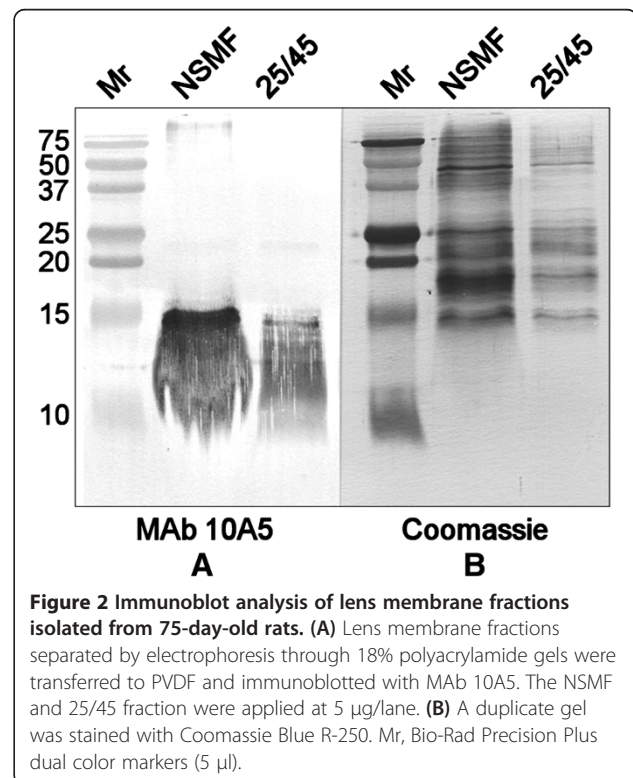
## Results

### Screening of hybridoma supernatants by ELISA and immunoblotting

Approximately 1600 hybridoma supernatants were tested by indirect ELISA against the 25/45 fraction and NSMF isolated from 20-day-old rats. Of these, nearly 10% recognized the homologous membrane fraction used for mouse immunization. All but one of the supernatants (MAB 10A5) also reacted with the heterologous membrane fraction. As shown in Figure 1A, immunoblotting revealed that MAB 10A5 recognized a low molecular weight antigen that was unique to the 25/45 fraction, but absent from the water-soluble supernatant fraction (WSF) and the NSMF isolated from 20-day-old rats. The antigen migrated as a series of bands between 10 kD and 15 kD and could be visualized by immunoblotting (Figure 1A), but not by staining with Coomassie Blue R-250 (Figure 1B). In blots of lens fractions prepared from 75-day-old rats (Figure 2A), the antigen was detected in both the NSMF and 25/45 fraction. The



**Figure 1** Immunoblot analysis of lens membrane fractions isolated from 20-day-old rats. **(A)** Lens membrane fractions separated by electrophoresis through 5-20% gradient gels were transferred to PVDF and immunoblotted with MAB 10A5. WSF: water soluble fraction, 10  $\mu$ g. NSMF: non-sedimenting membrane fraction, 5  $\mu$ g. 25/45 fraction, 5  $\mu$ g. **(B)** A duplicate gel was stained with Coomassie Blue R-250. Note that the 10–15 kD antigen reactive with MAB 10A5 did not stain with Coomassie Blue (area marked by the asterisk), although numerous proteins outside that mass range took up the dye. Molecular weight standards (Mr) are Bio-Rad Precision Plus dual color markers (5  $\mu$ l) and are expressed in kD.



**Figure 2** Immunoblot analysis of lens membrane fractions isolated from 75-day-old rats. **(A)** Lens membrane fractions separated by electrophoresis through 18% polyacrylamide gels were transferred to PVDF and immunoblotted with MAB 10A5. The NSMF and 25/45 fraction were applied at 5  $\mu$ g/lane. **(B)** A duplicate gel was stained with Coomassie Blue R-250. Mr, Bio-Rad Precision Plus dual color markers (5  $\mu$ l).

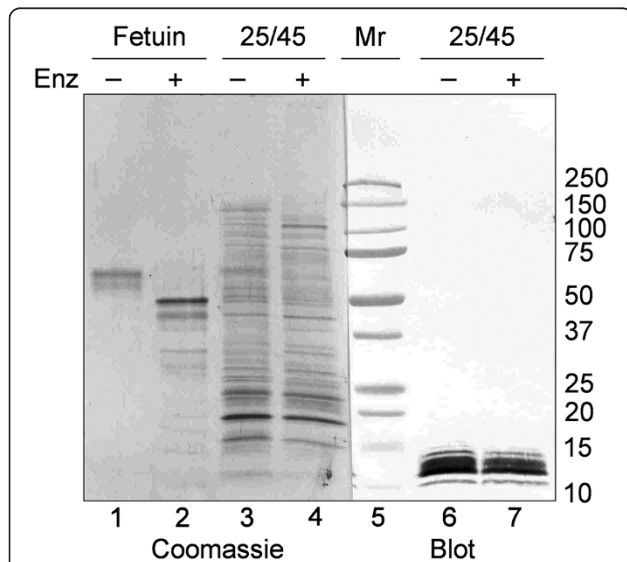
multi-band pattern in samples from 75-day-old animals was less distinct than that seen in 20-day-old animals.

#### Enzymatic deglycosylation of the 25/45 fraction

The 25/45 fraction from 20-day-old rats was evaluated for carbohydrate residues using an enzymatic deglycosylation procedure that removes N-linked and O-linked carbohydrates from glycoproteins (Figure 3). The presence of glycoproteins in the 25/45 fraction was demonstrated by the minor differences observed between untreated (lane 3) and deglycosylated (lane 4) samples stained with Coomassie Blue R-250. These differences were most apparent between 50 and 150 kD. Deglycosylation of the 25/45 fraction did not change the electrophoretic mobility of the antigen reactive with MAb 10A5 or the intensity of its recognition by the antibody (lane 7) compared to the untreated control (lane 6). Deglycosylation of the bovine fetuin positive control (lane 2) resulted in a major shift in its molecular weight compared to the untreated control (lane 1).

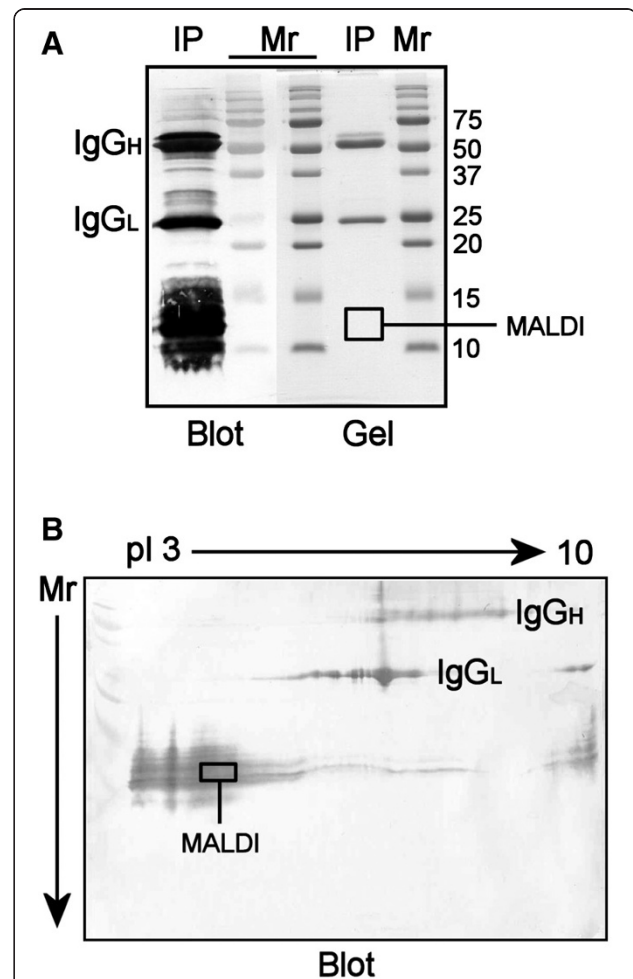
#### Immunoprecipitation of the antigen reactive with MAb 10A5, followed by 1-D and 2-D electrophoresis

The antigen reactive with MAb 10A5 was concentrated by immunoprecipitation from the 25/45 fraction isolated



**Figure 3 Enzymatic deglycosylation of the 25/45 fraction isolated from 20-day-old rats.** The control glycoprotein bovine fetuin (1 µg/lane) and the 25/45 fraction (8 µg/lane) were incubated with (+) or without (-) deglycosylation enzymes (Enz) prior to their electrophoresis through a 5-20% gradient gel and transfer to PVDF. Deglycosylation of fetuin resulted in a major shift in its molecular weight (compare lanes 1 and 2). Minor differences in Coomassie Blue staining patterns are evident between the untreated (lane 3) and deglycosylated (lane 4) 25/45 fraction samples. However, deglycosylation of the 25/45 fraction failed to alter the electrophoretic mobility or immunoreactivity of the antigen recognized by MAb 10A5 (compare lanes 6 and 7).

from 20-day-old rats. The immunoprecipitate was subjected to one-dimensional (1-D) (Figure 4A) and two-dimensional (2-D) electrophoresis (Figure 4B) prior to analysis by matrix-assisted laser desorption/ionization-time-of-flight/mass spectrometry (MALDI-ToF/MS). The IgG heavy (IgG<sub>H</sub>) and light (IgG<sub>L</sub>) chains comprising MAb 10A5 were evident at 55 kD and 25 kD, respectively, in both 1-D and 2-D gels. In the blot of the 1-D gel (Figure 4A), the immunoprecipitated antigen was strongly recognized by MAb 10A5 within the 10–15 kD mass



**Figure 4 One-dimensional (1-D) and two-dimensional (2-D) electrophoresis of the antigen immunoprecipitated by MAb 10A5.** The antigen reactive with MAb 10A5 was concentrated by immunoprecipitation from the 25/45 fraction of 20-day-old rats using MAb 10A5-coated magnetic beads. The IgG heavy (IgG<sub>H</sub>) and light (IgG<sub>L</sub>) chains comprising MAb 10A5 are marked. **(A)** After 1-D electrophoresis, the immunoprecipitate (IP) was immunoblotted with MAb 10A5 (Blot) or stained with colloidal Coomassie Blue G-250 (Gel). The area of the gel submitted for MALDI-ToF/MS is indicated by the box. **(B)** After 2-D electrophoresis, the immunoprecipitate was immunoblotted with MAb 10A5. The boxed area was excised from replicate 2-D gels stained with colloidal Coomassie Blue G-250, and the gel slices were analyzed by MALDI-ToF/MS. pI, isoelectric focusing point.

range, but the antigen remained unstained by colloidal Coomassie Blue G-250 in the replicate gel. None of the additional stains, including Alcian blue, silver nitrate, imidazole-zinc sulfate, Stains-all, and Stains-all counterstained by silver nitrate, stained the antigen even after it was concentrated by immunoprecipitation (data not shown). In blots of 2-D gels (Figure 4B), the antigen focused toward the anode and within the expected 10–15 kD mass range. Areas of the 1-D and 2-D gels submitted for MALDI-ToF/MS are marked by boxes in Figure 4A and 4B.

#### MALDI-ToF/MS

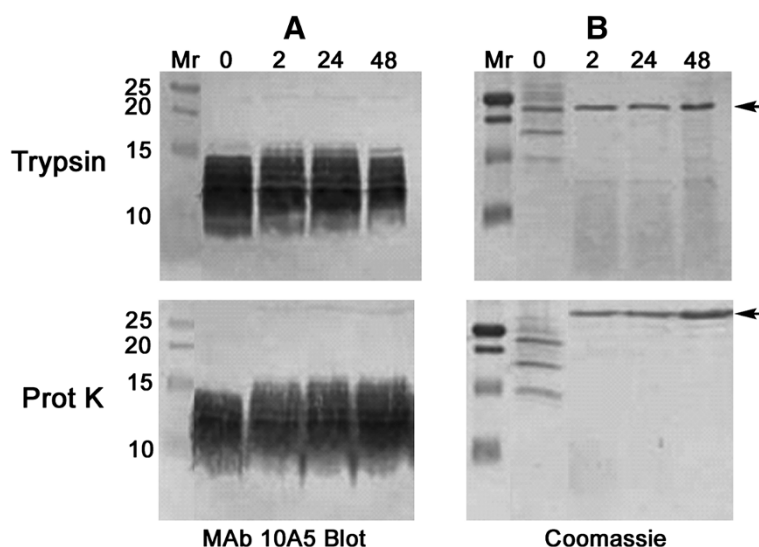
Proteins in gel slices containing the antigen recognized by MAb 10A5 were provisionally identified by MALDI-ToF/MS. The mass lists compiled for the 1-D versus 2-D gel slices were completely unique, with no proteins identified in common. The sole protein identified with confidence in the 1-D gel slice was structural maintenance of chromosomes 1-like 1 (SMC1, gi 13928946), a protein involved in sister chromatid cohesion during the mitotic cell cycle (Zou 2011). An Excel file containing the peptide summary report for the 1-D gel slice has been provided [see Additional file 1]. The sole protein identified with confidence in gel slices excised from duplicate 2-D gels was anionic trypsin-1 precursor (gi 6981420), which may have been a contaminant contributed by the trypsin preparation used in the MALDI-ToF procedure. Details of the peptide summary report for the 2-D gel slices are presented as an additional Excel file [see Additional file 2].

#### Protease digestion of the 25/45 fraction from 20-day-old rats

Trypsin or proteinase K digestion of the 25/45 fraction for up to 48 h had no effect on the immunoreactivity or electrophoretic mobility of the 10–15 kD antigen reactive with MAb 10A5 (Figure 5A). In contrast, membrane proteins in the 25/45 fraction were completely destroyed by protease treatment, as demonstrated by Coomassie staining of the digests after SDS-PAGE (Figure 5B). Within 2 h of digestion, the only discernible proteins that remained in the digests were the proteases trypsin and proteinase K, which migrated to 23.8 kD and 28.9 kD, respectively (arrows, Figure 5B).

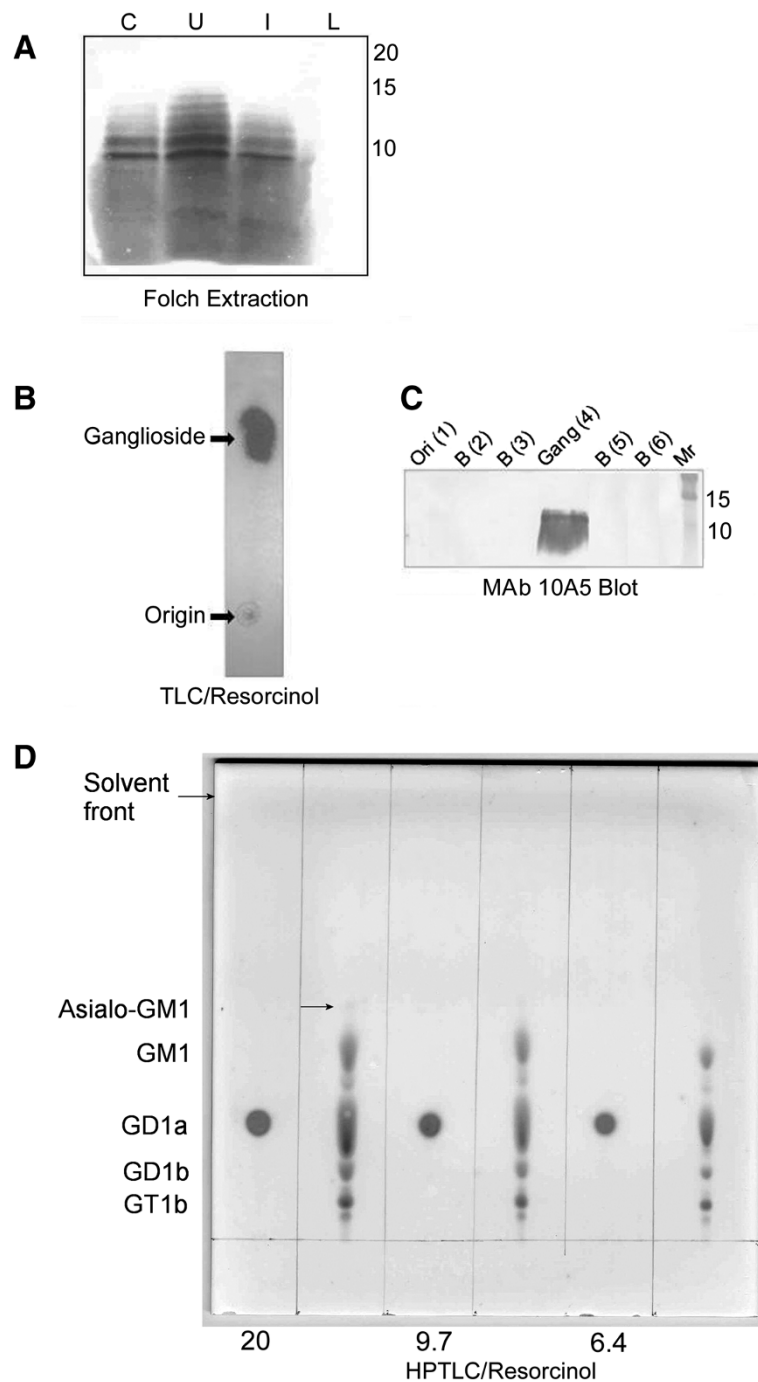
#### Folch extraction, thin layer chromatography, and dot blot immunoassay

Folch extraction of the 25/45 fraction isolated from 20-day-old rats yielded three distinct phases: an upper phase, a flocculent interface, and a lower phase. Both the upper phase and interface were reactive with MAb 10A5 in immunoblots (Figure 6A). Thin-layer chromatography of the upper phase in a solvent system comprising propanol/water (7:3 v/v) resolved a single spot that stained with resorcinol (Figure 6B). When eluates from silica gel bands scraped from a duplicate TLC plate were probed with MAb 10A5 by immunoblotting, MAb 10A5 reactivity was present only in the band that corresponded with the ganglioside spot revealed by resorcinol staining (Figure 6C). Resolution of the immunoreactive spot through HPTLC plates in a solvent system comprising chloroform/methanol/0.2% aqueous CaCl<sub>2</sub> (55:45:10 v/v/v)



**Figure 5** Protease resistance of the antigen recognized by MAb 10A5. Samples of the 25/45 fraction (20 µg) removed after 0, 2, 24, and 48 hours of digestion with trypsin or proteinase K (Prot K) were run on duplicate 18% resolving gels (10 µg/lane). **(A)** Digests from one gel were probed with MAb 10A5 by immunoblot analysis. **(B)** The duplicate gel was stained with Coomassie Blue R-250. Arrows mark trypsin and proteinase K at 23.8 kD and 28.9 kD, respectively.





**Figure 6 Folch extraction and thin-layer chromatography of the antigen unique to the 25/45 fraction.** (A) Fifteen- $\mu$ l aliquots of the upper phase (U), lower phase (L), and interface (I) obtained by Folch extraction of the 25/45 fraction isolated from 20 day-old rats were separated by SDS-PAGE through 18% resolving gels and probed with MAb 10A5. Unextracted 25/45 fraction (5  $\mu$ g) was included as a positive control (C). (B) Upper phase obtained by Folch extraction from 200  $\mu$ g of 25/45 fraction protein was subjected to TLC through 20  $\times$  20 cm silica gel H plates and stained with resorcinol to visualize gangliosides. (C) Silica gel bands scraped from a replicate TLC plate were eluted and subjected to SDS-PAGE through 18% resolving gels. After transfer to PVDF, the membrane was immunoblotted with MAb 10A5. Note that immunoreactivity was restricted to the area of the plate containing the ganglioside (Gang). No reactivity was noted at the origin (Ori) or in other bands (B) scraped from the lane containing the upper phase. (D) Ganglioside extracted by the Folch method from the equivalent of 20, 9.7, and 6.4  $\mu$ g of 25/45 fraction protein was subjected to high performance TLC (HPTLC) through 10  $\times$  10 cm silica gel 60 plates and stained with resorcinol. Bovine mixed ganglioside standards were applied at 18.8, 9.4, and 4.7  $\mu$ g (per ganglioside) in alternating lanes. The arrow marks the asialo-GM1 ganglioside.

demonstrated that it co-migrated with the GD1a bovine ganglioside standard (Figure 6D). However, neither purified bovine GD1a nor any of the additional bovine brain gangliosides in the standard mixture reacted with MAb 10A5 in a dot blot immunoassay (Figure 7, panel 3). The proteoglycans chondroitin sulfate and heparan sulfate failed to migrate from the application origin on HPTLC plates developed with the chloroform/methanol/0.2% aqueous  $\text{CaCl}_2$  (55:45:10 v/v/v) solvent system and stained poorly with resorcinol (Figure 8).

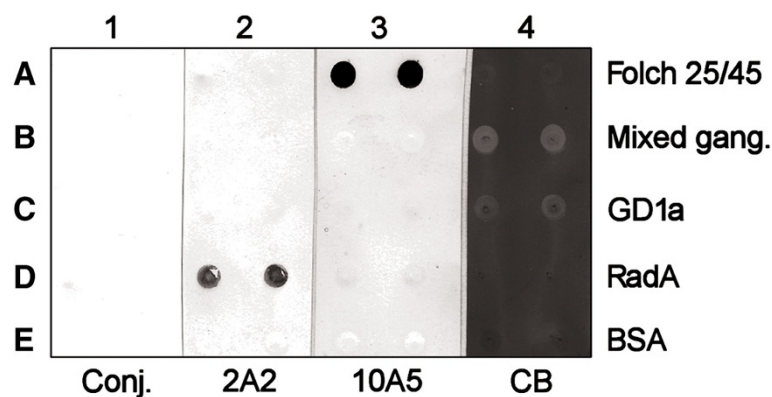
## Discussion

In this study, we demonstrated that the 25/45 membrane fraction differs antigenically from the NSMF isolated from the ocular lenses of 20-day-old rats. We generated a monoclonal antibody, MAb 10A5, specific for a ganglioside-like antigen unique to the 25/45 fraction that was absent from the NSMF in 20-day-old animals. The presence of the antigen in one membrane fraction, but not the other, supports the hypothesis that the 25/45 fraction and NSMF represent distinct subdomains within the ocular lens.

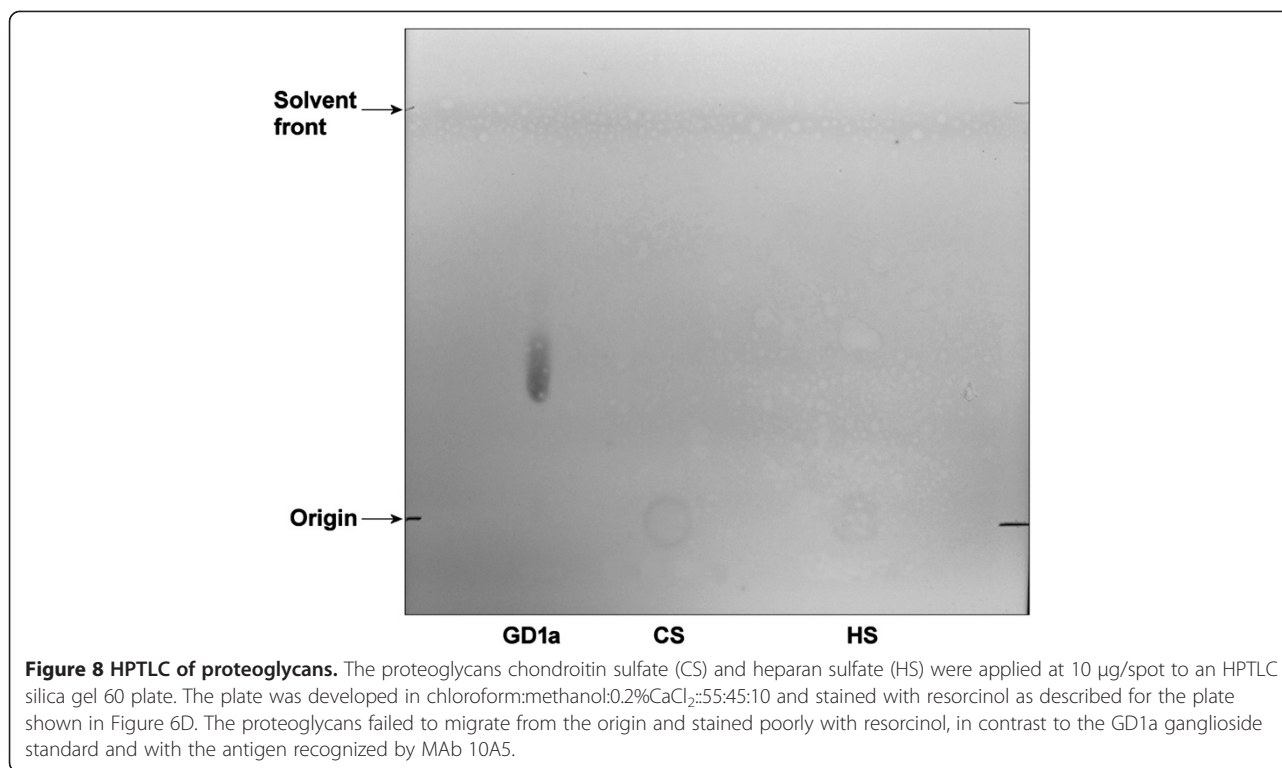
We initially assumed that the antigen recognized by MAb 10A5 is a protein or modified protein based on its electrophoretic mobility through polyacrylamide gels. However, an extensive battery of tests performed on the antigen failed to reveal any evidence of a proteinaceous component. In the first series of tests, the antigen was concentrated by immunoprecipitation from the 25/45 fraction and subjected to SDS-PAGE. Gels containing the antigen were incubated in routine and specialized stains. Neither silver stain (estimated sensitivity, 5–10 ng per protein band) nor colloidal Coomassie Blue G-250 (sensitivity, ~30 ng/band) detected the antigen. The

cationic dye Stains-all (Goldberg and Warner 1997), which stains sialoglycoproteins and phosphoproteins blue, proteoglycans purple, and less acidic proteins pink, failed to detect the antigen. Stains-all counterstained with silver nitrate, a combination that enables detection of sub-nanogram quantities of phosphoproteins (Goldberg and Warner 1997), did not stain the antigen. The proteoglycan stain Alcian blue (Wall and Gyi 1988) and the reverse stain imidazole-zinc sulfate (Castellanos-Serra et al. 1999; Hardy et al. 1997), were also ineffective in antigen visualization. In each experiment, a replicate gel was immunoblotted with MAb 10A5 to ensure the presence of the antigen within the 10–15 kD mass range.

Next, the antigen was evaluated as a glycoprotein by subjecting the 25/45 fraction to enzymatic deglycosylation and examining immunoblots probed with MAb 10A5 for changes in antigen mass or intensity of antibody recognition. No changes in the immunoblot pattern were observed after deglycosylation, suggesting that the antigen reactive with MAb 10A5 is not a glycoprotein that contains N- or O-linked carbohydrates. We then attempted to identify the antigen by MALDI-ToF/MS. The antigen was concentrated and separated from other components in the 25/45 fraction by immunoprecipitation, followed by 1-D and 2-D electrophoresis. Gel slices were submitted for analysis after ensuring the antigen's presence by clipping pieces from each end of the slices and probing the pieces with MAb 10A5. The peptide mass lists compiled for the 1-D and 2-D gel slices were completely different from one another with no proteins identified in common, despite irrefutable evidence of the antigen's presence in all gel slices submitted for analysis. We interpreted the MALDI-ToF/MS results as



**Figure 7** Ganglioside dot blot immunoassay employing MAb 10A5. Rows of a PVDF membrane were spotted with: (A) the Folch upper phase extracted from 2  $\mu\text{g}$  of 25/45 fraction protein, (B) 5  $\mu\text{g}$  of bovine mixed ganglioside standards, (C) 1  $\mu\text{g}$  of purified bovine GD1a, (D) 50 ng of the negative control protein RadA-6xHis, and (E) 2.5% BSA in 50% methanol. The antigens were probed with: (1) alkaline phosphatase-conjugated secondary antibody in the absence of primary antibody; (2) MAb 2A2, an isotype-matched negative control antibody specific for the irrelevant bacterial protein RadA-6xHis; and (3) MAb 10A5. Panel 4 was stained with Coomassie Blue R-250 and destained in 40% methanol/10% acetic acid to reveal white ganglioside spots against a blue background.



compelling evidence that the antigen recognized by MAb 10A5 is not a protein. The proteins listed in the MALDI-ToF/MS reports were most likely contaminants, especially given that 90% of these proteins were present in such low quantity that they could not be identified with confidence.

To confirm our hypothesis that the antigen recognized by MAb 10A5 is not a protein, we incubated the 25/45 fraction with trypsin and proteinase K, and found that the protein digestion protocols had no effect on the antigen's mass or immunoreactivity. Given these results, we considered other, non-protein classes of macromolecules in subsequent attempts to identify the antigen.

During extraction of the 25/45 fraction by the Folch method, the antigen reactive with MAb 10A5 partitioned to the upper phase, which is known to contain both proteins and gangliosides (Folch et al. 1957). Thin layer chromatography and resorcinol staining of the upper phase revealed the presence of a ganglioside-like spot that, when eluted from the TLC plate, proved highly immunoreactive with MAb 10A5. On high performance TLC plates developed with the chloroform/methanol/0.2% aqueous CaCl<sub>2</sub> (55:45:10 v/v/v) solvent system that is well-suited for ganglioside separation (Schlosshauer et al. 1988), the immunoreactive spot migrated with the same mobility as the GD1a ganglioside standard. In a subsequent dot blot immunoassay, MAb 10A5 failed to recognize purified bovine GD1a or any of the additional

gangliosides in the standard mixture, which included GT1b, GD1b, GM1, and asialo-GM1. Normal rat lenses have been shown to contain GM1, GD1a, GD1b, GT1a, GT1b, GQ1b, GM3, GD3, GT3, GT1c, GQ1c, and GP1c (Saito and Sugiyama 2000a, b). MAb 10A5 may recognize a lens-associated ganglioside, e.g. GD3 or GT3, whose mobility through TLC plates is similar to that of GD1a.

Because we are aware that proteoglycans can be resistant to proteases (Seldin et al. 1985), we considered the possibility that the antigen reactive with MAb 10A5 might be a proteoglycan that would be unaffected by incubation in trypsin or proteinase K. Therefore, we subjected the proteoglycans chondroitin sulfate and heparan sulfate to HPTLC in the chloroform/methanol/0.2% aqueous CaCl<sub>2</sub> (55:45:10 v/v/v) solvent system and stained the chromatograms with resorcinol. In sharp contrast to the ganglioside-like antigen recognized by MAb 10A5, the proteoglycans failed to migrate from the application origin and stained very poorly with resorcinol. This result demonstrated that the antigen reactive with MAb 10A5 is biochemically distinct from the proteoglycans. The result also was consistent with the failure of Stains-All and Alcian blue to detect the antigen in polyacrylamide gels.

The multi-band pattern yielded by the ganglioside-like antigen in western blots probed with MAb 10A5 is intriguing. There is scant literature that describes how free

gangliosides behave in SDS-PAGE gels. A report by Heuser et al. (1974) showed that purified gangliosides migrate behind the dye front when subjected to polyacrylamide gel electrophoresis in the presence of SDS. Gangliosides can self-associate and may interact with proteins through nonspecific hydrophobic interactions (Fukunaga et al. 2012; Osborne et al. 1982). We believe that the ganglioside-like antigen recognized by MAb 10A5 migrates to the area of the gel behind the dye front, where it interacts nonspecifically with protein fragments that are present in the same area. We further believe that this interaction explains why we see multiple antibody-reactive bands on Western blots of the 25/45 lens membrane preparation.

Gangliosides play an important role in the formation and stabilization of specific cell membrane lipid domains (Sonnino et al. 2007). Gangliosides are ceramide-derived glycolipids with one or more sialic acid residues attached via glucose to the primary hydroxyl group of the sphingosine backbone. The carbohydrate moiety always contains galactose in addition to glucose and sialic acid, and may also contain N-acetyl galactosamine. The hydrophobic ceramide contains a fatty acid and is inserted into the plasma membrane, with the hydrophilic oligosaccharide headgroups protruding into the extracellular medium (Cavallotti and Cerulli 2008; Sonnino et al. 2007). The amphiphilic character of the ganglioside manifests several physico-chemical properties that contribute to microdomain formation. These include lipid transition temperature, oligosaccharide headgroup geometries that favor ganglioside clustering and packing, the ability of the headgroups to interact with water molecules, and the capacity of the gangliosides to form hydrogen bonds at the lipid-water interface (Sonnino et al. 2007). Headgroup composition greatly influences the formation of positive and negative surface curvatures within the cell membrane. For example, in caveolae, gangliosides are distributed so that those with the highest surface area (*i.e.*, the largest oligosaccharide headgroups) are located on the edges of the invaginations where the surface has the greatest positive curvature, with cholesterol positioned in the inner part (Sonnino et al. 2007). Such an arrangement forms a microdomain of reduced membrane fluidity, where the components necessary to carry out such functions as receptor trafficking and signal transduction are held in close proximity to one another (Raguz et al. 2008; Sonnino et al. 2007).

Alterations in lens ganglioside composition may influence cataract formation. Early studies suggested that human cataractous lenses consist of a simple pattern of GM3 and GM1 (Sarkar and Cenedella 1982; Windeler and Feldman 1970), but later reports revealed a more complicated ganglioside pattern (Swindell et al. 1988; Tao and Lee 1986). In particular, Ogiso (1998) and Ogiso

et al. (1990) showed that mature cataractous lenses contain an increased level of a slow-moving ganglioside when compared to immature cataractous lenses removed from individuals in the same age group. The slow-moving ganglioside was found to consist of glucose, galactose, and sialic acid in a molar ratio of 2:1:4, with no N-acetyl galactosamine detected (Ogiso et al. 1990). The composition of the slow-moving ganglioside was similar to GM3 except for the long-chain fatty acid moiety. Analysis by TLC further showed that an increase in gangliosides during cataract maturation was frequently accompanied by the appearance of polysialogangliosides (Ogiso et al. 1990).

We observed age-related changes in the distribution of the ganglioside-like antigen recognized by MAb 10A5. In 20-day-old animals, the antigen was found only in the 25/45 ocular lens fraction, but by age 75 days, the antigen was found in both the 25/45 fraction and NSMF. The redistribution of the ganglioside-like antigen from the major membrane fraction to both the major membrane fraction and the NSMF may be related to the aging-associated remodeling of the lens plasma membrane cytoskeleton (Beebe et al. 2001; De Maria et al. 2009; Lee et al. 2000). Redistribution of the antigen may have functional consequences. Gangliosides have been reported to modulate receptor function in microdomains (McJarrow et al. 2009), an effect that might be shared by the ganglioside-like antigen upon its incorporation into the NSMF. Furthermore, if the ganglioside-like antigen undergoes age-related modifications, it has the potential to contribute to cataractogenesis. Ogiso (1998) suggested that age-related modifications to lens gangliosides alter the cell-to-cell interaction induced by cell surface saccharide chains, resulting in initiation and progression of cataractogenesis. Modified gangliosides caused by age progression may also disrupt plasma membrane ion transport and trans-membrane signaling, further promoting age-dependent cataract formation (Hakomori 1981). Whether the ganglioside-like antigen modulates the function of the NSMF or contributes to cataract formation will require testing in an appropriate animal model of cataract.

## Conclusion

Using hybridoma technology, we showed that the 25/45 membrane fraction isolated from the ocular lenses of 20-day-old rats is antigenically distinct from the NSMF. Restriction of the antigen to the 25/45 fraction in 20-day-old animals supports the hypothesis that the 25/45 fraction and NSMF represent different subdomains within the ocular lens. MAb 10A5, a monoclonal antibody specific for this ganglioside-like antigen, will be a useful tool for tracking the antigen in an animal model of ocular aging and cataractogenesis.



## Methods

### Rat lens membrane preparations

All protocols involving animals were approved by the A.T. Still University Institutional Animal Care Committee and were conducted in accordance with the recommendations of the Guide for the Care and Use of Laboratory Animals. The 25/45 fraction and NSMF were isolated from the lenses of 20-day-old and 75-day-old Sprague Dawley rats as previously described (Fleschner 1998). Briefly, a 10% homogenate (wet tissue weight to buffer volume) was prepared by Dounce homogenization of decapsulated lenses in buffer comprising 5 mM Tris, 1 mM EDTA, and 5 mM  $\beta$ -mercaptoethanol, pH 8.0, containing a protease inhibitor cocktail (P8340) (Sigma Chemical Co., St. Louis, MO). The homogenate was centrifuged at 20,000 *g* for 30 min to obtain the water-insoluble sedimenting membrane fraction and water-soluble supernatant fraction (WSF). The sedimenting membrane fraction was further fractionated by discontinuous sucrose density gradient centrifugation through 25%, 45% and 50% sucrose at 100,000 *g* for 120 min. The 25/45 fraction was collected from the interface between 25% and 45% sucrose. The NSMF was isolated by adjusting the density of the water-soluble supernatant to 1.22 g/ml with solid KBr, centrifuging the solution at 100,000 *g* for 16 h, and removing the floating NSMF from the top of the solution. The NSMF was washed twice, dialyzed to reduce KBr concentration, and then concentrated by centrifugation at 68,000 *g* for 60 min.

### Hybridoma production and screening

Groups of four female BALB/c mice were immunized with the 25/45 fraction or NSMF isolated from 20-day-old rats in three intraperitoneal injections over the course of three months. Each injection contained 100  $\mu$ g of protein in a total volume of 200  $\mu$ l. For the first immunization, the antigen was emulsified in 50% Freund's complete adjuvant (MP Biomedicals, Solon, OH). The second and third intraperitoneal injections were given in 50% Freund's incomplete adjuvant (MP Biomedicals). Titers of sera obtained by tail bleed 11 days after the third intraperitoneal injection were determined by immunoblotting (Towbin et al. 1979) against the homologous antigen used for immunization. Three days prior to hybridoma production, the mouse from each group that had the highest antibody titer received an intravenous booster immunization containing 50  $\mu$ g of antigen in 50  $\mu$ l of phosphate-buffered saline (PBS, pH 7.4). Splenocytes from the mice were fused to Sp2/0-Ag14 myeloma cells as described by Van Deusen (1983) and selected in HAT medium prepared from Dulbecco's modified Eagle's medium supplemented with 15% horse serum (Sigma-Aldrich, St. Louis, MO).

Beginning 10 days after fusion, undiluted hybridoma culture supernates were screened for monoclonal antibodies

(MAbs) by indirect enzyme-linked immunosorbent assay (ELISA) (Voller et al. 1976) against microtiter plates coated with 1  $\mu$ g/well of 25/45 fraction or NSMF from 20-day-old rats. Reactive supernates were detected with 1:2000 alkaline phosphatase-conjugated goat anti-mouse immunoglobulins (IgG, IgM, IgA) (Sigma) and *p*-nitro phenyl phosphate substrate solution (Pierce Chemical Co., Rockford, IL). Supernatants that were reactive with the membrane fraction used for mouse immunization were subsequently tested by ELISA against the heterologous membrane fraction. From this screening protocol, a single monoclonal antibody was identified that reacted with one membrane fraction but not both: MAb 10A5 recognized an antigen unique to the 25/45 fraction that was absent from the NSMF in 20-day-old animals. The hybridoma line secreting MAb 10A5 was cloned three times by limiting dilution (Campbell 1984) and adapted to growth in HybriMax serum- and protein-free medium (Sigma). The MAb was concentrated and the medium was exchanged for PBS by ultrafiltration through Biomax-30 membranes (Millipore, Billerica, MA). MAb 10A5 was identified as an IgG2b antibody using a Mouse Typer™ Isotyping Kit (Bio-Rad, Hercules, CA).

### SDS-PAGE and immunoblotting of lens membrane fractions

Ocular lens fractions were subjected to SDS-PAGE as described by Laemmli (1970) through 18% or 5-20% polyacrylamide gradient resolving gels, and the proteins were visualized by staining with 0.1% w/v Coomassie Blue R-250 in 40% methanol/10% acetic acid. Alternatively, proteins were electrophoretically transferred from the gels to polyvinylidene fluoride (PVDF) membranes and probed by immunoblotting as described by Towbin et al. (1979). Briefly, membranes were blocked by a 1 h incubation in Tris-buffered saline (TBS; 20 mM Tris, 150 mM NaCl, pH 7.5) containing 5% nonfat dry milk (NFD) before being incubated for 90 min in MAb 10A5 diluted to 1  $\mu$ g/ml in TBS containing 0.05% Tween 20 (TTBS) and 1% NFD. The membrane was washed in TTBS and then incubated for 90 min in 1:3000 alkaline phosphatase-conjugated goat anti-mouse IgG (Sigma). After further washes, membranes were developed with nitroblue tetrazolium/5-bromo-4-chloro-3-indolyl phosphate substrate (NBT/BCIP) (Bio-Rad).

### Enzymatic deglycosylation of the 25/45 fraction

The 25/45 fraction from 20-day-old rats was subjected to enzymatic deglycosylation (GlycoPro™ kit, Prozyme, San Leandro, CA) to remove N-linked (asparagine-linked) and simple O-linked (serine/threonine-linked) carbohydrates from glycoproteins. One hundred  $\mu$ g of 25/45 fraction protein in 30  $\mu$ l of distilled water were mixed with 10  $\mu$ l of 5X incubation buffer (0.25 M

sodium phosphate, pH 7.0) and 2.5  $\mu$ l of denaturation buffer (2% SDS, 1% 2-mercaptoethanol). The mixture was heated at 100°C for 5 min. After the mixture had cooled to room temperature, 2.5  $\mu$ l of 15% NP-40 detergent were added, followed by 1  $\mu$ l each of N-glycanase, sialidase A, and O-glycanase. Incubation with the enzymes was allowed to proceed for 3 h at 37°C, after which aliquots containing 8  $\mu$ g of the deglycosylated 25/45 fraction protein were resolved by SDS-PAGE through 5-20% gradient gels. Control lanes were loaded with untreated 25/45 fraction protein (8  $\mu$ g), and with untreated or deglycosylated bovine fetuin (1  $\mu$ g/lane). The proteins were transferred to PVDF membranes for staining with Coomassie Blue R-250 or immunoblotting with MAb 10A5 as described previously. The membranes were examined to determine whether deglycosylation of the samples caused a shift in molecular weight or a reduction in reactivity with MAb 10A5 compared to untreated controls.

#### **Immunoprecipitation of the antigen reactive with MAb 10A5**

Immunoprecipitation was performed as described by Stuart and Chamberlain (2003). An aliquot containing 150  $\mu$ g of 25/45 fraction protein from 20-day-old rats was adjusted to a final concentration of 1% Triton X-100 (TX100) in a total volume of 150  $\mu$ l PBS. The solution was sonicated on ice by three 15-sec bursts, incubated for 60 min in a 37°C water bath with occasional vortexing, and centrifuged for 10 min at 10,000 rpm in a minifuge. The supernatant was incubated for 90 min with 150  $\mu$ l of Protein G Dynabeads (Invitrogen Corp., Carlsbad, CA) pre-coated with MAb 10A5 (1  $\mu$ g antibody/ $\mu$ l beads). The beads were washed five times in PBS-0.01% Tween 20, and the immune complexes were eluted into 25  $\mu$ l of Laemmli denaturing sample buffer (62.5 mM Tris-HCl, pH 6.8, 2% SDS, 5% 2-ME, 20% glycerol, 0.1% bromophenol blue) by incubation for 5 min in a boiling water bath. Eluates containing the immune complexes (12  $\mu$ l/lane) were subjected to electrophoresis through 18% polyacrylamide gels. The gels were stained with Coomassie Blue R-250 as previously described, or with one of six alternative stains: colloidal Coomassie Blue G-250 (University of Missouri Proteomics Center 2006), Alcian blue (Wall and Gyi 1988), silver nitrate (Terry et al. 2004), imidazole-zinc sulfate (Castellanos-Serra et al. 1999; Hardy et al. 1997), Stains-All (Goldberg and Warner 1997), or a combination of Stains-All and silver nitrate (Goldberg and Warner 1997; Terry et al. 2004). The colloidal Coomassie Blue G-250 staining procedure was used to fix and stain gels in preparation for MALDI-ToF/MS, described below. The gel was washed three times in distilled water, stained overnight at room temperature in 300 ml of Coomassie Brilliant Blue G-250

(0.08% w/v in 20% ethanol, 1.6% phosphoric acid, and 8% ammonium sulfate), and then destained by extensive washing in distilled water.

#### **2-Dimensional (2-D) electrophoresis**

The antigen reactive with MAb 10A5 was immunoprecipitated from 450  $\mu$ g of TX100-solubilized 25/45 fraction using 270  $\mu$ l of MAb 10A5-coated Protein G Dynabeads. Immune complexes were eluted from the beads into 375  $\mu$ l of isoelectric focusing (IEF) sample buffer (9 M urea, 4% CHAPS, 3 mM tributylphosphine, 0.04% Bio-Lyte 3/10 ampholytes) by incubation for 1 h in a 37°C water bath with occasional vortexing. The eluate was split into three 125- $\mu$ l portions, each of which was used to rehydrate a 7-cm ReadyStrip™ IPG strip (Bio-Rad), pI 3–10, under active rehydration conditions. The strips were focused in a programmable Protean IEF cell (Bio-Rad), after which they were equilibrated by successive 10-min incubations in buffer I (6 M urea, 0.375 M Tris-HCl, pH 8.8, 2% SDS, 20% glycerol, 2.2% dithiothreitol) and buffer II (6 M urea, 0.375 M Tris-HCl, pH 8.8, 2% SDS, 20% glycerol, 1.25% [w/v] iodoacetamide). The IPG strips were then subjected to second-dimension SDS-PAGE through 18% polyacrylamide gels. The contents of one gel were transferred to a PVDF membrane and immunoblotted with MAb 10A5 to confirm the presence of the antigen. The two replicate gels were fixed and stained with colloidal Coomassie Blue G-250.

#### **MALDI-ToF and MS analysis**

For MALDI-ToF/MS, gel slices containing the antigen immunoprecipitated by MAb 10A5 were excised from 1-D and 2-D gels after fixation and staining in colloidal Coomassie Blue G-250. Because the antigen did not take up the dye, it was localized in the gels by comparison to replicate immunoblots probed with MAb 10A5. As an added assurance that gel slices from 2-D gels contained the immunoreactive antigen, ends of the excised pieces were probed with MAb 10A5 by immunoblotting. A 1-mm piece clipped from both ends of each slice were equilibrated in denaturing sample buffer, subjected to SDS-PAGE, transferred to PVDF, and probed with MAb 10A5. Gel slices shown to contain the antigen were submitted to Applied Biomics, Inc. (Hayward, CA) for trypsin digestion and MALDI-ToF/MS on an Applied Biosystems Proteomics analyzer. Mass lists compiled from the mass spectra were searched against the National Center for Biotechnology Information non-redundant (NCBI-nr) mammalian protein database using GPS Explorer software equipped with the MASCOT search engine.

#### **Protease digestion of the 25/45 fraction**

The 25/45 fraction from 20-day-old rats was subjected to in-solution trypsin digestion as described in the

product bulletin (Part# 9PIV511) for TPCK-modified sequencing grade trypsin (Promega, Madison, WI). A sample containing 100 µg of 25/45 fraction protein dissolved in 50 µl of protein denaturation buffer (50 mM Tris-HCl, 6 M urea, 4 mM DTT, pH 8.0) was digested at 37°C with 5 µg of trypsin in 300 µl of digestion buffer (50 mM Tris-HCl, 1 mM CaCl<sub>2</sub>, pH 7.6). Aliquots containing 20 µg of the 25/45 fraction were removed after 0 h (undigested control containing no enzyme), 2 h, 24 h, and 48 h of incubation. Digestion was stopped by adding 3 µl of 50 mM phenylmethylsulfonyl fluoride (PMSF) to each aliquot and immediately storing the samples at -80°C. Digestion with proteinase K (Fisher Scientific, St. Louis, MO) was performed in similar fashion, except that proteinase K was used at a concentration of 0.1 µg/µl in digestion buffer comprising 50 mM Tris-HCl, 5 mM CaCl<sub>2</sub>, pH 7.5, and digestion was stopped by adding 5 µl of 50 mM PMSF to each 20 µg aliquot. All samples were lyophilized to dryness and then reconstituted in 30 µl of Laemmli sample buffer prior to SDS-PAGE through duplicate 18% resolving gels (15 µl/lane). Gels were stained with Coomassie Blue R-250 or immunoblotted with MAb 10A5 as previously described.

#### **Folch extraction of the 25/45 fraction and thin-layer chromatography**

A sample containing 400 µg of 25/45 fraction protein from 20-day-old rats was subjected to the Folch lipid extraction procedure (Folch et al. 1957). The upper phase, interface, and lower phase were collected into separate glass tubes, lyophilized to dryness, and rehydrated in 60 µl of PBS. Fifteen µl from each sample were mixed with 5 µl of 4X Laemmli sample buffer and incubated in a boiling water bath for 5 min. Each 20-µl sample was then subjected to SDS-PAGE and immunoblotting to determine which fraction(s) contained the antigen recognized by MAb 10A5.

The upper phase obtained by Folch extraction from 200 µg of 25/45 fraction protein was analyzed by thin-layer chromatography (TLC) on duplicate 20 × 20 cm, 250 micron Uniplate™ Silica Gel H, binder-free plates (Analtech, Newark, DE) with a propanol/water (7:3 v/v) solvent system. One TLC plate was stained with resorcinol (Findlay and Evans 1990), while the duplicate plate was used to recover gangliosides for immunoblotting. For ganglioside recovery, consecutive 2 × 2 cm silica gel bands were scraped from lanes containing the upper phase and eluted into 1 ml of chloroform/methanol (1:1 v/v). Volumes were reduced under a nitrogen stream, and samples were solubilized in 40 µl of Laemmli sample buffer prior to SDS-PAGE (20 µl/lane) and immunoblotting with MAb 10A5.

The upper phase of the 25/45 fraction Folch extract was also subjected to high performance TLC on

10 × 10 cm HPTLC Silica Gel 60 plates (Fisher Scientific) (Schlosshauer et al. 1988). Gangliosides extracted from the equivalent of 20, 9.7, and 6.4 µg of 25/45 fraction protein were spotted onto the HPTLC plates in 1 µl of chloroform/methanol (2:1 v/v) along with bovine mixed ganglioside standards (Matreya, Pleasant Gap, PA) in adjacent lanes. Additional samples applied to the HPTLC Silica Gel 60 plates included the proteoglycans chondroitin sulfate and heparan sulfate, each applied at 10 µg. Plates were developed in a solvent system comprising chloroform/methanol/0.2% aqueous CaCl<sub>2</sub> (55:45:10 v/v/v) and stained with resorcinol.

#### **Ganglioside dot blot immunoassay**

MAb 10A5 was tested for reactivity against bovine gangliosides by a dot blot immunoassay adapted from the method of Chabraoui et al. (1993). A PVDF membrane was wetted in methanol, soaked for 5 min in PBS, and then inserted while still wet into a dot blot apparatus (Bio-Rad). Membrane spots were dried by vacuum pressure and then coated with antigens solubilized in methanol (1.5 µl/spot). Antigens included bovine mixed gangliosides (5 µg), purified bovine GD1a (1 µg, Matreya), the Folch upper phase extracted from 2 µg of 25/45 fraction protein, and 50 ng of the irrelevant bacterial protein RadA-6xHis (Richardson et al. 2012), the latter serving as a negative control. After a 90-min incubation at room temperature to facilitate antigen adsorption, the membrane was removed from the apparatus, rinsed in PBS, and blocked for 60 min in PBS containing 5% bovine serum albumin (BSA). Replicate strips cut from the membrane were incubated for 60 min in MAb 10A5 or an isotype-matched negative control antibody [MAb 2A2 specific for RadA-6xHis (Richardson et al. 2012)], each diluted to 2 µg/ml in PBS-1% BSA. After several washes in PBS, the strips were incubated for 60 min in 1:2000 goat anti-mouse IgG-alkaline phosphatase, washed again, and then developed in NBT/BCIP substrate. To demonstrate that gangliosides remained bound to the PVDF membrane throughout the dot blot protocol, one of the replicate strips was stained with Coomassie Blue R-250 to enable visualization of white ganglioside spots against a dark blue background.

#### **Additional files**

**Additional file 1:** Peptide summary report for 1-D gel slice containing the antigen recognized by MAb 10A5.

**Additional file 2:** Peptide summary report for two 2-D gel slices containing the antigen recognized by MAb 10A5.

#### **Competing interests**

The authors declare that they have no competing interests.



#### Authors' contributions

JKW performed immunoprecipitations, electrophoresis, in-gel staining techniques, immunoblotting, protease digestions, Folch extractions, and TLC. AFA performed immunoprecipitations, electrophoresis, immunoblotting, and enzymatic deglycosylation studies. CRF conceived of the study, isolated the lens fractions, and performed TLC. MKS generated MAb 10A5; performed ELISAs, immunoprecipitations, electrophoresis, immunoblotting, Folch extractions, and TLC; and drafted the manuscript. All authors read and approved the final manuscript.

#### Acknowledgments

This study was supported by the Warner-Fermaturo Fund and the Graduate Program at A.T. Still University, Kirksville College of Osteopathic Medicine.

#### Author details

<sup>1</sup>Northeast Regional Medical Center, Otolaryngology/Facial Plastic Surgery Residency Program, 315 S Osteopathy Ave, Kirksville, MO 63501, USA. <sup>2</sup>Phoenix Children's Hospital/Maricopa Medical Center Pediatric Residency Program, 1919 E Thomas Rd, Phoenix, AZ 85016, USA. <sup>3</sup>Department of Biochemistry, A T Still University, Kirksville College of Osteopathic Medicine, 800 W Jefferson St, Kirksville, MO 63501, USA. <sup>4</sup>Department of Microbiology/Immunology, A T Still University, Kirksville College of Osteopathic Medicine, 800 W Jefferson St, Kirksville, MO 63501, USA.

Received: 13 May 2013 Accepted: 1 October 2013

Published: 2 October 2013

#### References

- Beebe DC, Vasiliev O, Guo J, Shui YB, Bassnett S (2001) Changes in adhesion complexes define stages in the differentiation of lens fiber cells. *Invest Ophthalmol Vis Sci* 42(3):727–734
- Borchman D, Cenedella RJ, Lamba OP (1996) Role of cholesterol in the structural order of lens membrane lipids. *Exp Eye Res* 62(2):191–197
- Campbell AM (1984) Monoclonal antibody technology: the production and characterization of rodent and human hybridomas. In: Burdon RH, Knippenberg PH (eds) *Laboratory techniques in biochemistry and molecular biology*, vol 13. Elsevier Science Publishing Company, Inc., New York
- Castellanos-Serra L, Proenza W, Huerta V, Moritz RL, Simpson RJ (1999) Proteome analysis of polyacrylamide gel-separated proteins visualized by reversible negative staining using imidazole-zinc salts. *Electrophoresis* 20(4–5):732–737
- Cavallotti CAP, Cerulli L (2008) Age related changes of the human eye. Humana Press, Totowa, NJ
- Cenedella RJ, Fleschner CR (1992) Selective association of crystallins with lens 'native' membrane during dynamic cataractogenesis. *Curr Eye Res* 11(8):801–815
- Chabraoui F, Derrington EA, Mallie-Didier F, Confavreux C, Quincy C, Caudie C (1993) Dot-blot immunodetection of antibodies against GM1 and other gangliosides on PVDF-P membranes. *J Immunol Methods* 165(2):225–230
- De Maria A, Shi Y, Kumar NM, Bassnett S (2009) Calpain expression and activity during lens fiber cell differentiation. *J Biol Chem* 284(20):13542–13550, doi:10.1074/jbc.M900561200
- Findlay JBC, Evans WH (1990) *Biological membranes: a practical approach*. IRL Press, Oxford University Press, New York, NY
- Fleschner CR (1998) Intermediate filament cytoskeletal proteins associated with bovine lens native membrane fractions. *Curr Eye Res* 17(4):409–418
- Fleschner CR (2002) Lens membrane fraction associated intermediate filaments of different aged rats. *Curr Eye Res* 24(4):296–304
- Fleschner CR, Cenedella RJ (1991) Lipid composition of lens plasma membrane fractions enriched in fiber junctions. *J Lipid Res* 32(1):45–53
- Fleschner CR, Cenedella RJ (1993) Isolation of a non-sedimenting membrane fraction from the water soluble fraction of bovine lens. *Exp Eye Res* 56(6):649–657
- Fleschner CR, Cenedella RJ (1997) Neutral lipids of the plasma membrane: composition of plasma membrane fractions isolated from ocular lens. *Curr Eye Res* 16(3):263–269
- Folch J, Lees M, Sloane Stanley GH (1957) A simple method for the isolation and purification of total lipides from animal tissues. *J Biol Chem* 226(1):497–509
- Fukunaga S, Ueno H, Yamaguchi T, Yano Y, Hoshino M, Matsuzaki K (2012) GM1 Cluster mediates formation of toxic alpha fibrils by providing hydrophobic environments. *Biochemistry* 51(41):8125–8131, doi:10.1021/bi300839u
- Goldberg HA, Warner KJ (1997) The staining of acidic proteins on polyacrylamide gels: enhanced sensitivity and stability of "stains-all" staining in combination with silver nitrate. *Anal Biochem* 251(2):227–233
- Hakomori S (1981) Glycosphingolipids in cellular interaction, differentiation, and oncogenesis. *Annu Rev Biochem* 50:733–764, doi:10.1146/annurev.bi.50.070181.003505
- Hardy E, Pupo E, Castellanos-Serra L, Reyes J, Fernandez-Patron C (1997) Sensitive reverse staining of bacterial lipopolysaccharides on polyacrylamide gels by using zinc and imidazole salts. *Anal Biochem* 244(1):28–32
- Heuser E, Lipp K, Wiegandt H (1974) Detection of sialic acid containing compounds and the behaviour of gangliosides in polyacrylamide disc electrophoresis. *Anal Biochem* 60(2):382–388
- Jacob RF, Cenedella RJ, Mason RP (1999) Direct evidence for immiscible cholesterol domains in human ocular lens fiber cell plasma membranes. *J Biol Chem* 274(44):31613–31618
- Jacob RF, Cenedella RJ, Mason RP (2001) Evidence for distinct cholesterol domains in fiber cell membranes from cataractous human lenses. *J Biol Chem* 276(17):13573–13578
- Laemmli UK (1970) Cleavage of structural proteins during the assembly of the head of bacteriophage T4. *Nature* 227(5259):680–685
- Lajoie P, Goetz JG, Dennis JW, Nabi IR (2009) Lattices, rafts, and scaffolds: domain regulation of receptor signaling at the plasma membrane. *J Cell Biol* 185(3):381–385
- Lee A, Fischer RS, Fowler VM (2000) Stabilization and remodeling of the membrane skeleton during lens fiber cell differentiation and maturation. *Dev Dyn* 217(3):257–270, doi:10.1002/(SICI)1097-0177(200003)217:3<257::AID-DVDY4>3.0.CO;2-5
- May GL, Wright LC, Holmes KT, Williams PG, Smith IC, Wright PE, Fox RM, Mountford CE (1986) Assignment of methylene proton resonances in NMR spectra of embryonic and transformed cells to plasma membrane triglyceride. *J Biol Chem* 261(7):3048–3053
- McJarrow P, Schnell N, Jumpsen J, Clandinin T (2009) Influence of dietary gangliosides on neonatal brain development. *Nutr Rev* 67(8):451–463, doi:10.1111/j.1753-4887.2009.00211.x
- Ogiso M (1998) Implication of glycolipids in lens fiber development. *Acta Biochim Pol* 45(2):501–507
- Ogiso M, Saito N, Sudo K, Kubo H, Hirano S, Komoto M (1990) Increase in lens gangliosides due to aging and cataract progression in human senile cataract. *Invest Ophthalmol Vis Sci* 31(10):2171–2179
- Osborne JC, Moss J, Fishman PH, Nakaya S, Robertson DC (1982) Specificity in protein-membrane associations: the interaction of gangliosides with *Escherichia coli* heat-labile enterotoxin and cholera toxin. *Biophys J* 37(1):168–169
- Perdue N, Yan Q (2006) Caveolin-1 is up-regulated in transdifferentiated lens epithelial cells but minimal in normal human and murine lenses. *Exp Eye Res* 83(5):1154–1161, doi:S0014-4835(06)00291-0 [pii] 10.1016/j.exer.2006.06.007
- Raguz M, Widomska J, Dillon J, Gaillard ER, Subczynski WK (2008) Characterization of lipid domains in reconstituted porcine lens membranes using EPR spin-labeling approaches. *Biochim Biophys Acta* 1778(4):1079–1090
- Richardson NC, Sargentini NJ, Singh VK, Stuart MK (2012) Monoclonal antibodies against the *Escherichia coli* DNA repair protein RadA/Sms. *Hybridoma* 31(1):25–31, doi:10.1089/hyb.2011.0075
- Saito M, Sugiyama K (2000a) Gangliosides of rat eye lens: a severe reduction in the content of C-series gangliosides following streptozotocin treatment. *Life Sci* 67(15):1891–1899
- Saito M, Sugiyama K (2000b) Tissue-specific expression of c-series gangliosides in the extraneural system. *Biochim Biophys Acta* 1474(1):88–92
- Sarkar CP, Cenedella RJ (1982) Gangliosides in normal and cataractous lenses of several species. *Biochim Biophys Acta* 711(3):503–508
- Schlosshauer B, Blum AS, Mendez-Otero R, Barnstable CJ, Constantine-Paton M (1988) Developmental regulation of ganglioside antigens recognized by the JONES antibody. *J Neurosci* 8(2):580–592
- Seldin DC, Austen KF, Stevens RL (1985) Purification and characterization of protease-resistant secretory granule proteoglycans containing chondroitin sulfate di-B and heparin-like glycosaminoglycans from rat basophilic leukemia cells. *J Biol Chem* 260(20):11131–11139
- Sonnino S, Mauri L, Chigorno V, Prinetti A (2007) Gangliosides as components of lipid membrane domains. *Glycobiology* 17(1):1R–13R
- Stuart MK, Chamberlain NR (2003) Monoclonal antibodies to elongation factor-1alpha inhibit in vitro translation in lysates of Sf21 cells. *Arch Insect Biochem Physiol* 52(1):17–34



- Swindell RT, Harris H, Buchanan L, Bell C, Albers-Jackson B (1988) Ganglioside composition in human cataractous nuclei. *Ophthalmic Res* 20(4):232–236
- Tang D, Borchman D, Yappert MC, Cenedella RJ (1998) Influence of cholesterol on the interaction of alpha-crystallin with phospholipids. *Exp Eye Res* 66(5):559–567
- Tao RV, Lee BC (1986) Isolation and identification of sialic acids from the gangliosides of human cataracts. *Curr Eye Res* 5(2):167–170
- Terry DE, Umstot E, Desiderio DM (2004) Optimized sample-processing time and peptide recovery for the mass spectrometric analysis of protein digests. *J Am Soc Mass Spectrom* 15(6):784–794
- Towbin H, Staehelin T, Gordon J (1979) Electrophoretic transfer of proteins from polyacrylamide gels to nitrocellulose sheets: procedure and some applications. *Proc Natl Acad Sci U S A* 76(9):4350–4354
- University of Missouri Proteomics Center (2006) Acrylamide gel protein detection methods, <http://proteomics.missouri.edu/protocols/proteinDetection.html>. Accessed 12 Sept 2013
- Van Deusen RA (1983) Making hybridomas. In: Stern NJ, Gamble HR (eds) *Hybridoma technology in agricultural and veterinary research*. Rowan & Allanheld, Totowa, NJ, pp 15–25
- Voller A, Bartlett A, Bidwell DE, Clark MF, Adams AN (1976) The detection of viruses by enzyme-linked immunosorbent assay (ELISA). *J Gen Virol* 33(1):165–167
- Wall RS, Gyi TJ (1988) Alcian blue staining of proteoglycans in polyacrylamide gels using the “critical electrolyte concentration” approach. *Anal Biochem* 175(1):298–299
- Windeler AS, Feldman GL (1970) The isolation and partial structural characterization of some ocular gangliosides. *Biochim Biophys Acta* 202(2):361–366
- Zou H (2011) The sister bonding of duplicated chromosomes. *Semin Cell Dev Biol* 22(6):566–571, doi:10.1016/j.semcdb.2011.03.013

doi:10.1186/2193-1801-2-500

**Cite this article as:** Whitman *et al.*: Monoclonal antibody 10A5 recognizes an antigen unique to the water-insoluble 25/45 membrane fraction of the rat ocular lens. *SpringerPlus* 2013 2:500.

**Submit your manuscript to a SpringerOpen<sup>®</sup> journal and benefit from:**

- Convenient online submission
- Rigorous peer review
- Immediate publication on acceptance
- Open access: articles freely available online
- High visibility within the field
- Retaining the copyright to your article

---

Submit your next manuscript at ► [springeropen.com](http://springeropen.com)

---