

RESEARCH

Open Access



Embryonic and mature astrocytes exert different effects on neuronal growth in rat ventral mesencephalic slice cultures

Sanaz Hashemian¹, Caitriona O'Rourke^{2,3}, James B. Phillips^{2,3}, Ingrid Strömberg¹ and Sara af Bjerken^{1*}

Abstract

One obstacle with grafting of dopamine neurons in Parkinson's disease is the insufficient ability of the transplant to reinnervate the host striatum. Another issue is the prospective interaction between the donor fetal tissue and the adult astrocytes of the host. To study nerve fiber growth and its interaction with immature/mature astrocytes, ventral mesencephalic (VM) organotypic rat tissue cultures from embryonic days (E) 12, E14, and E18 were studied up to 35 days in vitro (DIV), and co-cultures of E14 VM tissue and mature green fluorescent protein (GFP)-positive astrocytes were performed. Generally, nerve fibers grew from the tissue slice either in association with a monolayer of migrated astroglia surrounding the tissue (glial-associated), or distal to the astroglia as non-glial-associated outgrowth. The tyrosine hydroxylase (TH)-positive glial-associated nerve fiber outgrowth reached a plateau at 21 DIV in E12 and E14 cultures. In E18 cultures, TH-positive neurons displayed short processes and migrated onto the astrocytes. While the non-glial-associated nerve fiber outgrowth dominated the E14 cultures, it was found absent in E18 cultures. The GFP-positive cells in the VM and GFP-positive astrocyte co-cultures were generally located distal to the monolayer of migrated fetal astrocytes, a few GFP-positive cells were however observed within the astrocytic monolayer. In those cases TH-positive neurons migrated towards the GFP-positive cells. Both the non-glial- and glial-associated nerve fibers grew onto the GFP-positive cells. Taken together, the glial-associated growth has limited outgrowth compared to the non-glial-associated nerve fibers, while none of the outgrowth types were hampered by the mature astrocytes.

Keywords: Organotypic culture, Ventral mesencephalon, Mature astrocytes, Developmental stages

Background

One treatment strategy for reducing the symptoms in Parkinson's disease is to transplant fetal dopamine producing tissue into the dopamine-depleted striatum of parkinsonian patients, restoring the dopamine input to the striatum. Preclinical studies demonstrate compensation of motor deficits and improvements such as functional synaptic connections (Björklund and Stenevi 1979; Perlow et al. 1979; Mahalik et al. 1985; Bolam et al. 1987; Clarke et al. 1988; Strömberg et al. 1988), normalized striatal firing rate (Strömberg et al. 1985; Fisher et al. 1991), and long-term graft survival (Freed et al. 1980;

Strömberg and Bickford 1996). One of the main problems with grafting is the insufficient reinnervation of the striatum (Barker et al. 1996), a technique using several implantation sites to cover the dopamine depleted-striatum was therefore developed to cover a larger volume of the dopamine-depleted brain (Nikkhah et al. 1994).

Knowledge about the interplay between nerve fibers and surrounding cells, such as glia, is important to understand the mechanism behind the reinnervational arrest of the graft. In vitro techniques, such as organotypic tissue culture, are useful to monitor the interaction between dopaminergic neurons and astrocytes. In organotypic tissue cultures of fetal ventral mesencephalon (VM), two morphologically and temporally different types of dopaminergic nerve fibers are observed (Johansson and Strömberg 2002). The first wave of nerve fibers that is formed is independent of the presence of astroglia,

*Correspondence: sara.af.bjerken@umu.se

¹ Department of Integrative Medical Biology, Umeå University, Umeå, Sweden

Full list of author information is available at the end of the article

and is called the non-glia-associated nerve fiber outgrowth, and is not persistent over time (Bergl of et al. 2007). The second wave, which appears around 7 days in vitro (DIV), is dependent on the presence of astrocytes and is called glial-associated nerve fibers. These nerve fibers are persistent over time, and always grow onto astrocytes. The two different nerve fiber growth patterns are present in/and reported from cultured tissue plated at embryonic day 14 (E14) in rats. Tissue obtained from later developmental ages, e.g. E18, reveal another pattern of interaction between nerve fibers and astrocytes, with migrating neurons instead of nerve fiber formation and total absence of non-glia-associated nerve fiber outgrowth (af Bjerken et al. 2008; Hashemian et al. 2014). However, long-term monitoring of the interaction between the nerve fibers and astrocytes is yet to be performed, and may generate valuable information about the reinnervational process and bring understanding to why the graft reinnervation of the host is terminated.

The results achieved from the previous tissue culture studies indicate that neuronal growth is depending on the age of the astrocytes. Adult astrocytes, regardless of their anatomical location, occupy a large domain in the brain, which is composed of a large number of fine processes, termed 'peripheral astrocyte processes' (PAPs) (Derouiche and Frotscher 2001; Bushong et al. 2002). PAPs extensively contact synapses and are considered primary sites for active astrocyte and neuronal signaling (Reichenbach 2009). While astrocytes are largely generated during the first postnatal week (Bandeira et al. 2009; Ge et al. 2012), PAPs are not induced until several weeks later (P14 to P26) (Bushong et al. 2004; Freeman 2010). The present study focuses on interaction between dopamine nerve fibers and astrocytes of different embryonic ages to further elucidate the interplay between astrocytes and neuronal growth at long-term time points. The different embryonic ages were chosen based on the peak ontogeny of dopaminergic neurons, occurring between E12-15 (Hanaway et al. 1971; Misale et al. 1998; Gates et al. 2006), where TH expression begins around E12 (Specht et al. 1981; Foster et al. 1988), and around E14, dopamine can be visualized (Olson and Seiger 1972; Voorn et al. 1988). The peak of astroglialogenesis occurs late prenatal to early postnatal stages, that is E18 to postnatal day (P) 7 (Sauvageot and Stiles 2002; Tien et al. 2012), and therefore E18 was chosen. The use of organotypic tissue cultures of VM, prepared from different embryonic ages, allows for long-term monitoring of the nerve fiber-glia interactions. In addition, to the long-term VM cultures of different developmental stages, co-cultures of E14 VM tissue and mature green fluorescent protein (GFP)-positive astrocytes were performed

to observe the effects of mature astrocytes on nerve fiber growth from embryonic tissue pieces.

Results

Astrocytic migration and nerve fiber outgrowth in E12 VM culture

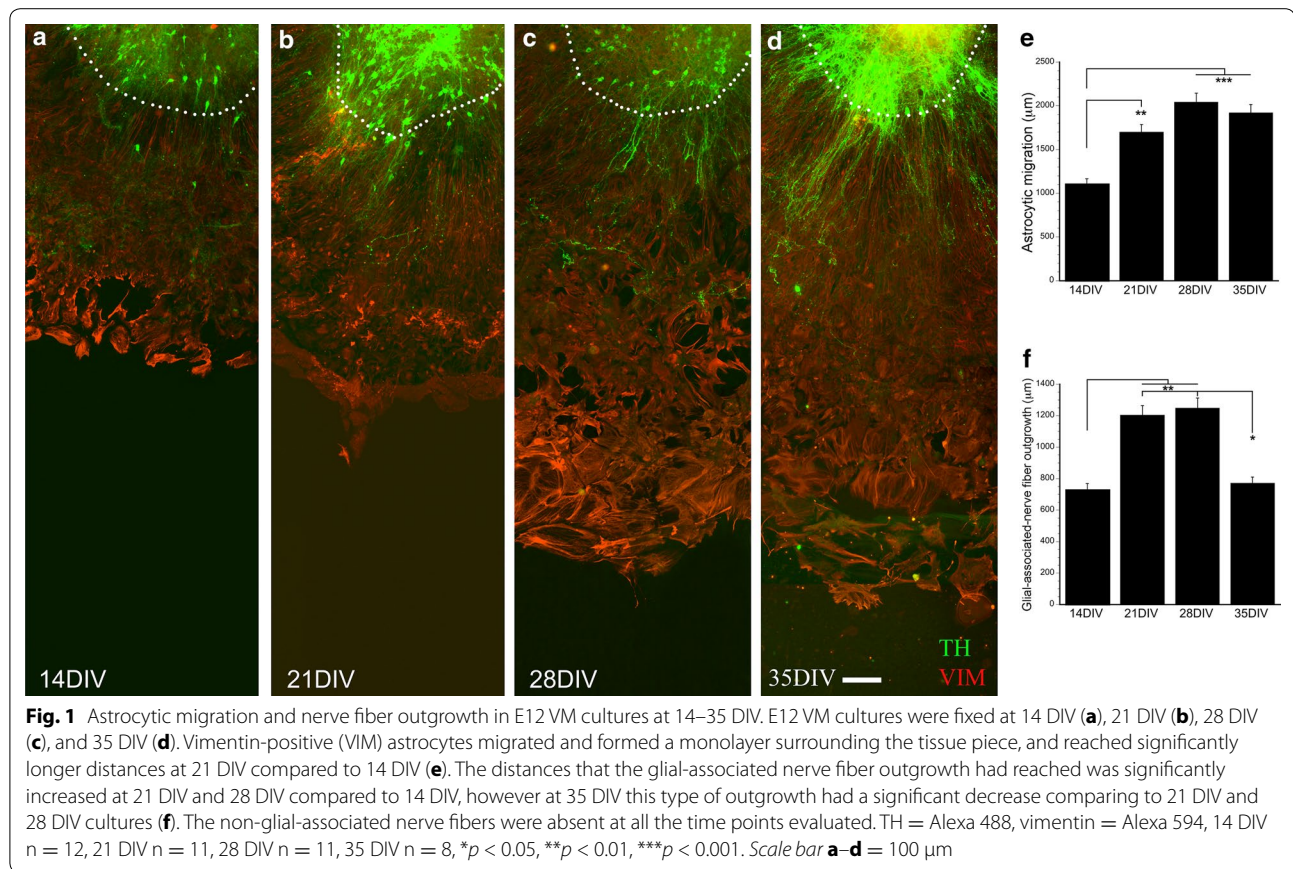
Vimentin-positive astrocytic migration from the tissue slice in E12 VM cultures reached significantly longer distances at 21 DIV compared to 14 DIV, and had reached a plateau at 21 DIV ($F_{3,41} = 11.723$, $p < 0.001$, one-way ANOVA; Fig. 1a–e). TH-positive glial-associated nerve fiber outgrowth was longer at 21 DIV and 28 DIV compared to 14 DIV. However, at 35 DIV the outgrowth was retracted and was significantly shorter compared to that measured at 21 and 28 DIV ($F_{3,41} = 7.688$, $p < 0.001$, one-way ANOVA; Fig. 1f). The non-glia-associated nerve fiber outgrowth was in general poor (Fig. 1a–d). Thus, the glial-associated TH-positive nerve fiber outgrowth was reduced at the latest time point and poor non-glia-associated growth was present at any time point investigated.

Astrocytic migration and nerve fiber outgrowth in E14 VM culture

Astrocytes migrated for longer distances from the tissue piece at 21 DIV compared to 14 DIV, and at 28 and 35 DIV the difference was significantly strengthened ($F_{3,48} = 15.902$, $p < 0.001$, one-way ANOVA; Fig. 2a–e). The glial-associated nerve fiber outgrowth was significantly enhanced at 21 and 28 DIV compared to 14 DIV, while it was decreased at 35 compared to 21 DIV ($F_{3,48} = 6.743$, $p < 0.001$, one-way ANOVA; Fig. 2f). The non-glia-associated nerve fibers had increased in length at 21 compared to 14 DIV ($F_{3,45} = 3.104$, $p < 0.05$, one-way ANOVA; Fig. 2g). At later time points in vitro, these nerve fibers displayed a dotted appearance, although some intact fibers were observed, and reached approximately three times the length of the glial-associated nerve fibers. Thus, neither the migration of astrocytes nor the growth of glial-associated TH-positive nerve fibers was different from results found in E12 cultures, however, in E14 cultures the non-glia-associated nerve fibers were present.

Astrocytic migration and nerve fiber outgrowth in E18 VM culture

Astrocytic migration from the tissue slice was enhanced at 21 compared to 14 DIV and reached significantly longer distances at 28 and 35 DIV ($F_{3,52} = 13.342$, $p < 0.001$, one-way ANOVA; Fig. 3e). The characteristics of E18 cultures were neural migration, which was seen at all times points in vitro (Fig. 3a–d). Furthermore, the non-glia associated nerve fibers were absent.



The glial-associated nerve fibers were, however, present, but due to migration of neurons and thereby difficulties to define the boarder of the tissue culture, they were not quantified.

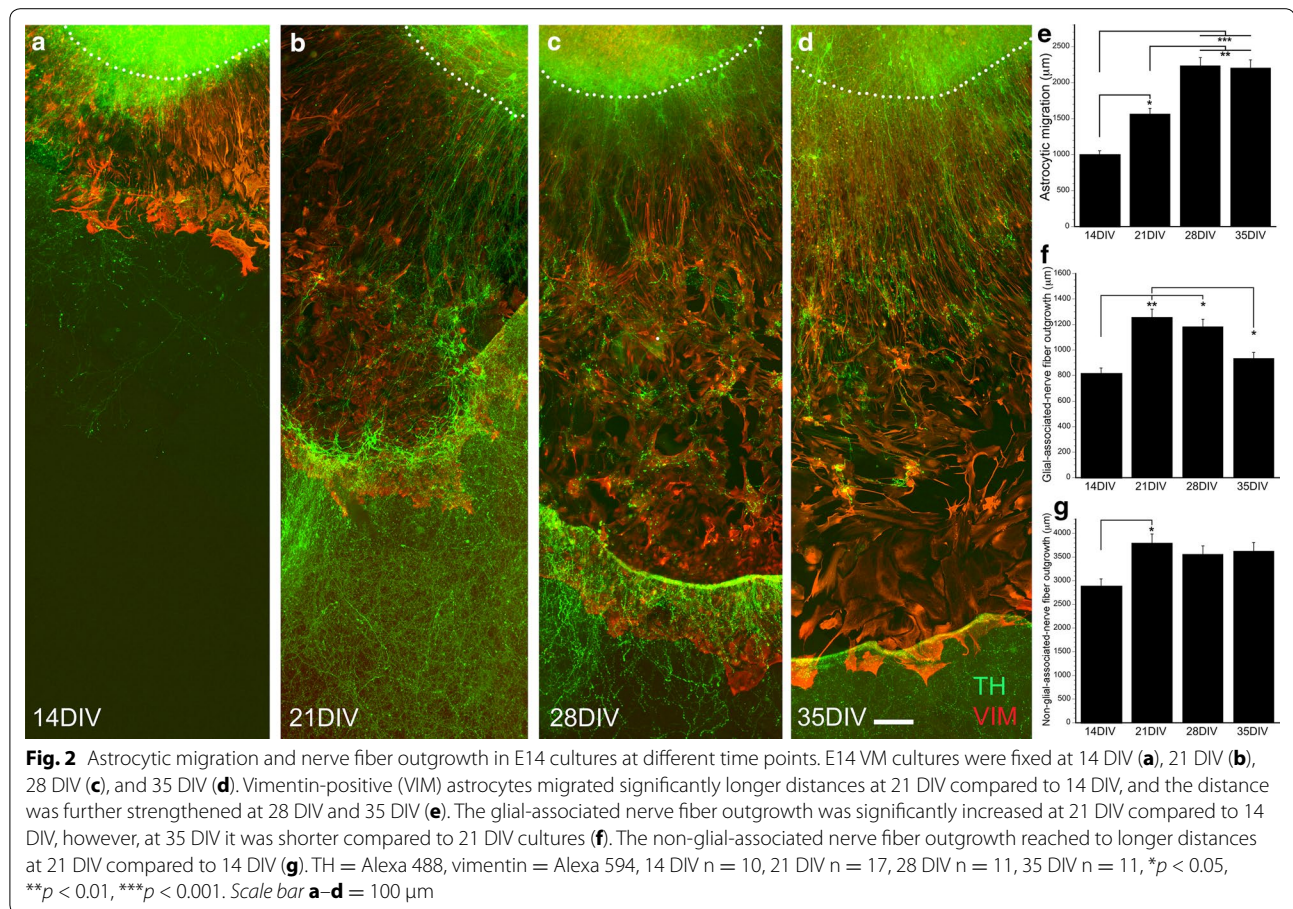
Co-culture of VM tissue and GFP-positive cells

Since both the non-glial- and glial-associated nerve fibers were present in E14 cultures, and both types reached a maximal outgrowth at 21 DIV, co-cultures of VM and GFP-positive mature astrocytes were studied in E14 tissue at 21 DIV. The vimentin-positive/GFP-negative astrocytes, derived from the VM tissue piece, had migrated from the tissue slice and formed a monolayer as seen in the single cultures described above. However, their organization was changed near the tissue slice from being a confluent monolayer as seen in single slice cultures to instead form a network of long vimentin-positive processes, leaving large areas empty between the processes (Fig. 4a). At longer distances, vimentin-positive/GFP-negative astrocytes were large and polygonal and formed a confluent monolayer. GFP-positive cells were organized in a monolayer distal to the GFP-negative astrocytes that had migrated from the tissue piece, however some single GFP-positive astrocytes were found closer to the VM

tissue slice. The morphology of the GFP-positive astrocytes were large and polygonal, when located distal to the astrocytes derived from the tissue piece, while smaller in size and with thin processes when placed in the near vicinity of astrocytes derived from the tissue piece (Fig. 4d, e). TH-positive neurons had migrated from the tissue slice as seen in the E18 cultures (Fig. 4a), however both glial-associated and non-glial-associated growths were found. The glial-associated TH-positive nerve fibers followed the thin, long vimentin-positive fibers, and grew over the GFP-positive astrocytes (Fig. 4b). In addition, also non-glial-associated nerve fibers were found in coexistence with GFP-positive cells. Thus, the presence of the adult GFP-positive cells had no inhibitory effect on TH-positive nerve fiber outgrowth, since both glial-associated- and non-glial-associated nerve fibers were observed growing on the GFP-positive cells (Fig. 4b, c).

Discussion

The results from the present study revealed that the outgrowth from TH-positive neurons at long-term time points in vitro was most prominent in E14 cultures, where TH-positive nerve fibers were present both on the monolayer of migrated astrocytes and beyond this

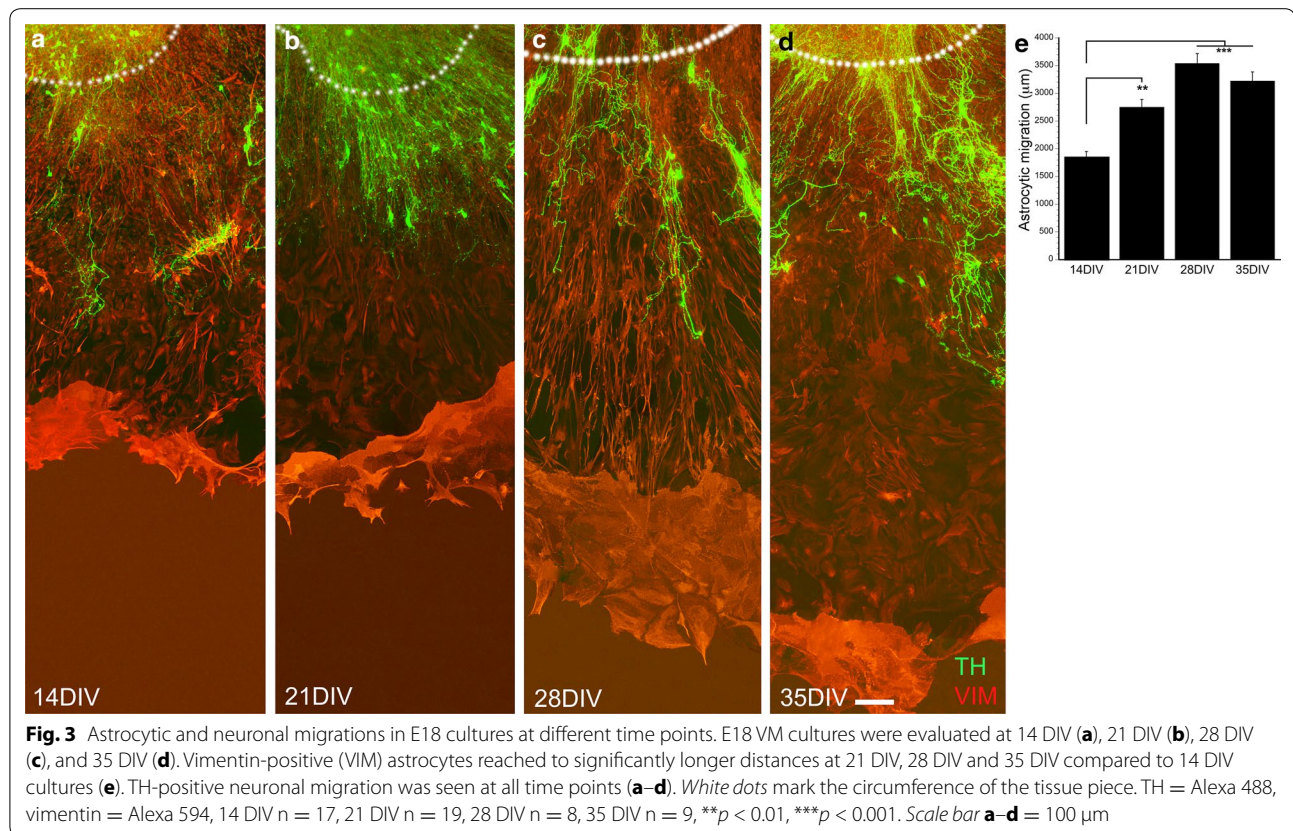


astrocytic monolayer, while TH-positive outgrowth in E12 and E18 tissue cultures was restricted to the migrating astrocytes. In E18 tissue cultures, the TH-positive outgrowth was poor, and TH-positive neurons had migrated onto the astrocytic monolayer. The astrocytes migrated away from the tissue slice and formed a confluent monolayer that reached a maximal distance from the tissue slice after 21 DIV. The astrocytic distribution was similar for E12, E14, and E18 cultures. The growth from TH-positive nerve fibers was not hampered by the presence of mature GFP-positive astrocytes.

The two types of nerve fiber outgrowths, depending on the absence or presence of astrocytes, seen in VM tissue cultures, is a general phenomenon also observed in tissue cultures from other CNS areas (Hashemian et al. 2014). From earlier studies it was suggested that the non-glial-associated growth was continuously growing, as long as the astrocytes did not migrate (Johansson and Strömberg 2003; Berglöf et al. 2007; af Bjerkén et al. 2008), while in the present study these nerve fibers appeared to reach a plateau at 21 DIV. The differences in the results might be because the non-glial-associated growth has not been followed for such a long time in culture before. Their

presence was dominant in E14 compared to E12 and E18 cultures, which means that they are produced within a narrow time window. Alternatively, the non-glial-associated nerve fibers were generated but did not survive up to 14 DIV. The glial-associated nerve fiber formation, on the other hand, was generated in both E12, E14, as well as in E18 cultures. The growth limit for these nerve fibers was also reached at 21 DIV, and even though the astrocytes continued to migrate for longer distances than the nerve fibers reached, nerve growth had been terminated. Thus, the early termination of reinnervation seen after grafting of fetal VM tissue into the dopamine-depleted striatum appears as a general phenomenon correlating with the time schedule for nerve fiber growth rather than presence or absence of astrocytes, this since similar limited nerve fiber outgrowth was found also in the cultures. This theory is further supported by studies demonstrating that, when grafted to the rat striatum, human nerve fibers are able to innervate for longer distances compared to rat nerve fibers (Strömberg et al. 1992; Victorin et al. 1992; Strömberg and Bickford 1996).

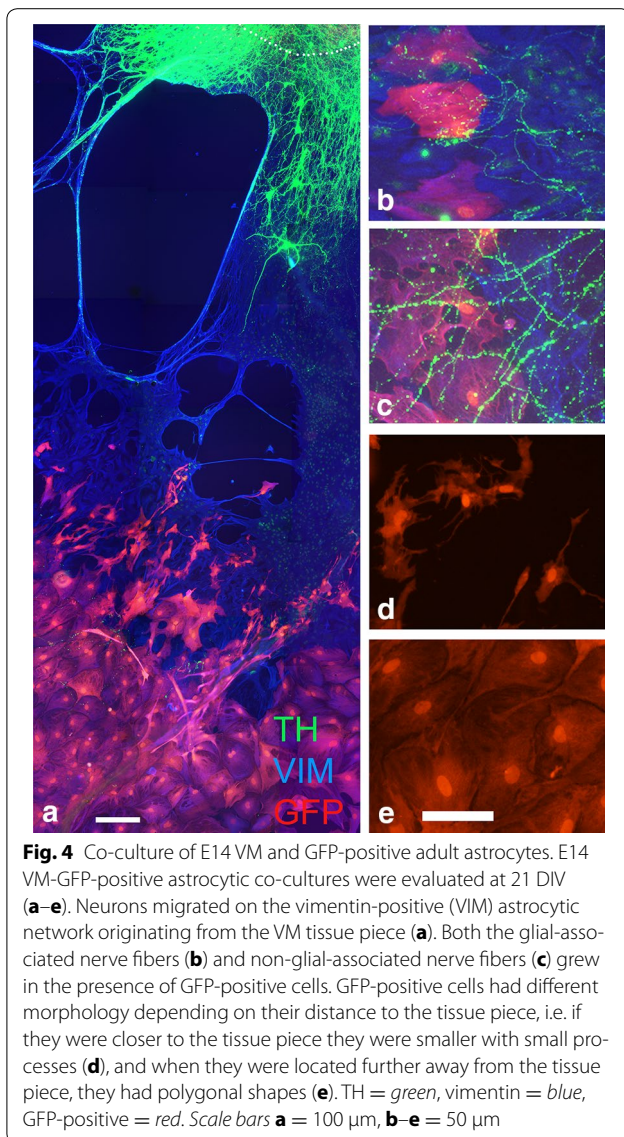
In E18 cultures, nerve fiber growth was present, although hard to measure since neurons frequently



had migrated onto the monolayer of astrocytes. During development, VM dopamine neurons migrate along radial glia and then tangentially to their final destination guided by already formed axons (Shults et al. 1990; Kawano et al. 1995). Migration of the dopamine neurons is mediated by stromal cell-derived factor 1 (CXCL12) via its receptor CXCR4 and reelin via the ApoER2 and VLDL receptors in the radial and tangential directions, respectively (Bushong et al. 2002; Sharaf et al. 2013; Yang et al. 2013). The migration is terminated at E18 (Shults et al. 1990; Sharaf et al. 2013), which was also one of the chosen time points for tissue harvesting/starting of primary cell cultures, and where neuronal migration was found. This migratory behavior among the TH-positive cells in E18 tissue cultures might be explained by the presence of GABA neurons (Berglöf et al. 2007). This since, while the generation of dopamine neurons is terminated at E18, the GABA neurons are still generated and their migration is modulated by already existing dopamine neurons (Vasudevan et al. 2012). Thus, the dopamine neurons might stay in their position while the GABA neurons migrate, resulting in changed location of the dopamine neurons in relation to other neurons. This may explain why the TH-positive neurons mostly are located to the periphery of the tissue slice at longer time points in vitro,

which also is a common finding in VM grafts. This finding may, however, not explain why the neurons follow the migrating astrocytes. It has been demonstrated though that inhibition of astrocytic production of chondroitin sulfate proteoglycans (CSPGs) hampers neuronal migration (Hashemian et al. 2014), indicating that CSPGs, produced by astrocytes older than E14, are involved in the neuronal migration seen in E18 cultures. This was confirmed by the results from the co-cultures where neuronal migration was promoted by the presence of GFP-positive mature astrocytes.

The addition of mature astrocytes to the VM cultures was performed to understand the interaction between dopamine nerve fiber growth and mature astrocytes. The GFP-positive astrocytes are besides vimentin-positive also glial fibrillary acidic protein (GFAP)-positive, indicating that they are mature and more reactive than those derived from the tissue slice (East et al. 2010). Although all the astrocytes in the E14 cultures, in this case co-cultured with mature GFP-positive astrocytes, demonstrate immunoreactivity towards vimentin, there are some GFAP-positive astrocytes present in pure E14 cultures as well (Johansson and Strömberg 2002). These astrocytes are found close to the border of the tissue slice and display long processes radiating from the tissue piece, and



does not appear morphologically rounded as the astrocytes that migrate from the tissue slice. Interestingly, while dopamine nerve fibers pass the GFAP-positive area in the E14 tissue slice, the TH-positive nerve fibers in the cultures were neither attracted to the mature GFP-positive astrocytes nor repelled by them. Thus, the hampered regeneration after for instance spinal cord injury due to the presence of GFAP-positive astroglia does not appear to be crucial for regeneration of TH-positive nerve fibers.

In conclusion, there is a critical time window for achieving long-distance nerve fiber outgrowth instead of neuronal migration. The presence of mature astrocytes appears not to inhibit these long-distance growing nerve

fibers, a finding which might be important for future grafting studies.

Methods

Animals

Organotypic tissue cultures were performed using fetal ventral mesencephalon (VM) obtained from Sprague–Dawley rat embryos. Animals were kept in a 12:12 h light–dark cycle with ad libitum access to food and water. All experiments were approved by the local ethics committee, and animals were handled in accordance with the European Communities Council Directive. Primary astrocyte cultures were obtained from genetically modified neonatal Sprague–Dawley rats (β -actin-eGFP reporter line) in accordance with the UK Animals (Scientific Procedures) Act (1986) and the Open University animal ethics advisory group.

Single ventral mesencephalic cultures

VM of fetuses from E12 (number of experiments = 5), E14 (number of experiments = 7), and E18 (number of experiments = 6) were dissected under sterile conditions using a dissection microscope, and chopped into 300 μ m coronal slices. The slices were transferred to Dulbecco's modified Eagle's medium (DMEM; Gibco, Stockholm, Sweden) and cut in the midline, each tissue piece giving rise to one culture. The tissue pieces were plated in a mixture of chicken plasma (Sigma-Aldrich, Stockholm, Sweden) and thrombin (1000 U/ml; Sigma-Aldrich, Stockholm, Sweden) on poly-D-lysine (PDL; 5 mg/100 ml dH₂O; Sigma-Aldrich, Stockholm, Sweden) -coated coverslips (12 \times 24 mm). After coagulation of the plasma/thrombin clot, the coverslips were placed in a 15 ml Falcon tube containing 0.9 ml medium. The tubes were then inserted into a rotating "roller-drum" (0.5 rpm) in an incubator at 37 $^{\circ}$ C and in 5 % CO₂ (Gähwiler et al. 1997) and kept for 14 DIV (n = 12 for E12, n = 10 for E14, n = 17 for E18), 21 DIV (n = 11 for E12, n = 17 for E14, n = 19 for E18), 28 DIV (n = 11 for E12, n = 11 for E14, n = 8 for E18), and 35 DIV (n = 8 for E12, n = 11 for E14, n = 9 for E18). Fresh medium was supplied every 3–4 days.

Culture medium

The sterilized culture medium was composed of 55 % DMEM, 32.5 % Hanks' balanced salt solution (HBSS; Gibco, Stockholm, Sweden), 10 % fetal bovine serum (FCS; Gibco, Stockholm, Sweden), 1.5 % glucose (Gibco, Stockholm, Sweden) and 1 % HEPES (Gibco, Stockholm, Sweden). At plating, antibiotics (10,000 U/ml penicillin, 10 mg/ml streptomycin, 25 μ g/ml amphotericin; Gibco, Stockholm, Sweden) were added to the medium to a final

concentration of 1 % and from the first medium change antibiotics were excluded.

Co-cultures of VM and GFP-positive cells

GFP-positive astrocytes obtained from the cortex of genetically modified postnatal day 2 (P2) Sprague–Dawley rat pups (β -actin-eGFP reporter line) were prepared as reported previously (East et al. 2009, 2013) and maintained in PDL-coated 75 cm² flasks for 14 days, shaken for 4 h at 150 rpm to remove microglia and other less adherent cells before trypsinization and cryostorage in DMEM containing 10 % DMSO and 20 % FCS. After thawing, cells were mixed with medium containing 1 % antibiotics, plated on a pre-coated PDL Petri dish and incubated for 4 days at 37 °C. Then, to separate and discard all other cells from the astrocytes, attached to the bottom of the Petri dish, they were shaken at 300 rpm for 6 h. The remaining astrocytes were supplied with fresh medium and left at 37 °C for further proliferation. Medium was changed twice a week. At the time for initiation of the co-culture, the cells were trypsinized with 0.25 % trypsin–EDTA and centrifuged at 180×g for 5 min. Supernatant was aspirated and the cells were washed with fresh medium two times. Cells were thereafter re-suspended in the medium to final concentration of minimum 3.3×10^6 cells/ml. 5 μ l of the suspension and one VM tissue piece, dissected from E14 fetuses, were mixed in 20 μ l of plasma together with 10 μ l thrombin to form a clot. The rest of the procedure was performed as described above. These cultures were kept for 21 DIV.

Immunohistochemistry

Single VM cultures were fixed at 14 DIV, 21 DIV, 28 DIV, and 35 DIV for 1 h in 2 % paraformaldehyde in 0.1 M phosphate buffered saline (PBS; pH = 7.4). The primary antibodies raised against tyrosine hydroxylase (TH; mouse anti-rat; diluted 1:1500; ImmunoStar, Hudson, WI, USA or rabbit anti-rat; diluted 1:300; Millipore AB, Solna, Sweden), vimentin (VIM; chicken anti-rat; diluted 1:800; Abcam, Cambridge, UK, or mouse anti-pig; diluted 1:200; Sigma-Aldrich, Stockholm, Sweden) were applied on cultures after rinsing them thoroughly in PBS, to visualize dopamine neurons and astrocytes, respectively. The use of two TH and two vimentin antibodies was due to technical reasons, both TH antibodies and both vimentin antibodies displayed however the same distribution pattern. The cultures were incubated with primary antibodies for 48–72 h in a humid chamber at 4 °C, followed by goat serum (5 %; Sigma-Aldrich, Stockholm, Sweden) as blocking solution for 15 min at room temperature, and subsequently with secondary antibodies, Alexa 594 (diluted 1:500; goat anti-mouse and goat anti-rabbit; Molecular Probes Inc., Eugene, OR, USA)

and Alexa 488 (diluted 1:200; goat anti-chicken and goat anti-mouse; Molecular Probes Inc., Eugene, OR, USA), for 1 h at room temperature. For staining the cell nuclei, cultures were incubated in DAPI (diluted 1:50, Molecular Probes Inc., Eugene, OR, USA) for 10 min at room temperature. All antibodies and DAPI were diluted in 0.1 M PBS containing 1 % Triton X-100.

Similar protocol was used for staining of the VM-GFP-positive astrocytic co-cultures. Since the GFP-positive cells were green fluorescent, Alexa 355 (diluted 1:100; goat anti-mouse; Molecular Probes Inc., Eugene, OR, USA) was used as a secondary antibody against vimentin, for 1 h at room temperature. DAPI staining was not performed. All antibodies were diluted in 0.1 M PBS containing 1 % Triton X-100.

Image analysis and statistical analysis

In each culture, astrocytic migration and TH-positive nerve fiber outgrowth from the periphery of the tissue slice to their distal end were measured using a scale mounted in one ocular of a fluorescence microscope. Astrocytic migration was measured in four perpendicularly placed directions and the distance to the outermost migrated astrocytes was determined. Four measurements were performed in areas with the longest nerve fiber outgrowth. Thereafter, the mean values, calculated for each culture, were used for statistical evaluation. Statistical analyses were performed using one-way ANOVA followed by Bonferroni post hoc test. The cultures were analyzed blind-coded. All results are expressed as means \pm SEM. $p < 0.05$ was set as level of significance. Images were captured with a digital camera connected to a computer, and analyzed using Openlab software (Improvision; Coventry, UK).

Authors' contributions

SH carried out the primary cell cultures and the immunohistochemistry, performed the statistical analysis and drafted the manuscript. CO and JP prepared and provided the GFP-positive cortical astrocytes and helped to draft the manuscript. IS conceived of the study, and participated in its design and coordination and helped to draft the manuscript. SB participated in the study design, supported with technical expertise and helped to draft and finalize the manuscript. All authors read and approved the final manuscript.

Author details

¹ Department of Integrative Medical Biology, Umeå University, Umeå, Sweden. ² Department of Life Health and Chemical Sciences, The Open University, Walton Hall, Milton Keynes MK7 6AA, UK. ³ Biomaterials and Tissue Engineering, UCL Eastman Dental Institute, 256 Gray's Inn Road, London WC1X 8LD, UK.

Acknowledgements

This study was funded by the Swedish Research Council grant #09917, the Swedish Parkinsonian Foundation, and the Umeå University Medical Faculty Funds.

Compliance with ethical guidelines

Competing interests

The authors declare that they have no competing interests.

Received: 22 July 2015 Accepted: 21 September 2015

Published online: 28 September 2015

References

- af Bjerkén S, Marschinke F, Strömberg I (2008) Inhibition of astrocytes promotes long-distance growing nerve fibers in ventral mesencephalic cultures. *Int J Dev Neurosci* 26:683–691
- Bandeira F, Lent R, Herculano-Houzel S (2009) Changing numbers of neuronal and non-neuronal cells underlie postnatal brain growth in the rat. *Proc Natl Acad Sci USA* 106:14108–14113
- Barker RA, Dunnett SB, Faissner A, Fawcett JW (1996) The time course of loss of dopaminergic neurons and the gliotic reaction surrounding grafts of embryonic mesencephalon to the striatum. *Exp Neurol* 141:79–93
- Berglöf E, af Bjerkén S, Strömberg I (2007) Glial influence on nerve fiber formation from rat ventral mesencephalic organotypic tissue cultures. *J Comp Neurol* 501:431–442
- Björklund A, Stenevi U (1979) Reconstruction of the nigrostriatal dopamine pathway by intracerebral nigral transplants. *Brain Res* 177:555–560
- Bolam JP, Freund TF, Björklund A, Dunnett SB, Smith AD (1987) Synaptic input and local output of dopaminergic neurons in grafts that functionally reinnervate the host neostriatum. *Exp Brain Res* 68:131–146
- Bushong EA, Martone ME, Jones YZ, Ellisman MH (2002) Protoplasmic astrocytes in CA1 stratum radiatum occupy separate anatomical domains. *J Neurosci* 22:183–192
- Bushong EA, Martone ME, Ellisman MH (2004) Maturation of astrocyte morphology and the establishment of astrocyte domains during postnatal hippocampal development. *Int J Dev Neurosci* 22:73–86
- Clarke DJ, Brundin P, Strecker RE, Nilsson OG, Björklund A, Lindvall O (1988) Human fetal dopamine neurons grafted in a rat model of Parkinson's disease: ultrastructural evidence for synapse formation using tyrosine hydroxylase immunocytochemistry. *Exp Brain Res* 73:115–126
- Derouiche A, Frotscher M (2001) Peripheral astrocyte processes: monitoring by selective immunostaining for the actin-binding ERM proteins. *Glia* 36:330–341
- East E, Golding JP, Phillips JB (2009) A versatile 3D culture model facilitates monitoring of astrocytes undergoing reactive gliosis. *J Tissue Eng Regen Med* 8:634–646
- East E, Blum de Oliveira D, Golding JP, Phillips JB (2010) Alignment of astrocytes increases neuronal growth in three-dimensional collagen gels and is maintained following plastic compression to form a spinal cord repair conduit. *Tissue Eng Part A* 16:3173–3184
- East E, Johns N, Georgiou M, Golding JP, Loughlin AJ, Kingham PJ, Phillips JB (2013) A 3D in vitro model reveals differences in the astrocyte response elicited by potential stem cell therapies for CNS injury. *Regen Med* 6:739–746
- Fisher LJ, Young SJ, Tepper JM, Groves PM, Gage FH (1991) Electrophysiological characteristics of cells within mesencephalon suspension grafts. *Neuroscience* 40:109–122
- Foster GA, Schultzberg M, Kokfelt T, Goldstein M, Hemmings HC Jr, Ouimet CC, Walaas SI, Greengard P (1988) Ontogeny of the dopamine and cyclic adenosine-3':5'-monophosphate-regulated phosphoprotein (DARPP-32) in the pre- and postnatal mouse central nervous system. *Int J Dev Neurosci* 6:367–386
- Freed WJ, Perlow MJ, Karoum F, Seiger A, Olson L, Hoffer BJ, Wyatt RJ (1980) Restoration of dopaminergic function by grafting of fetal rat substantia nigra to the caudate nucleus: long-term behavioral, biochemical, and histochemical studies. *Ann Neurol* 8:510–519
- Freeman MR (2010) Specification and morphogenesis of astrocytes. *Science* 330:774–778
- Gähwiler BH, Capogna M, Debanne D, McKinney RA, Thompson SM (1997) Organotypic slice cultures: a technique has come of age. *Trends Neurosci* 20:471–477
- Gates MA, Torres EM, White A, Fricker-Gates RA, Dunnett SB (2006) Re-examining the ontogeny of substantia nigra dopamine neurons. *Eur J Neurosci* 23:1384–1390
- Ge WP, Miyawaki A, Gage FH, Jan YN, Jan LY (2012) Local generation of glia is a major astrocyte source in postnatal cortex. *Nature* 484:376–380
- Hanaway J, McConnell JA, Netsky MG (1971) Histogenesis of the substantia nigra, ventral tegmental area of Tsai and interpeduncular nucleus: an autoradiographic study of the mesencephalon in the rat. *J Comp Neurol* 142:59–73
- Hashemian S, Marschinke F, af Bjerken S, Stromberg I (2014) Degradation of proteoglycans affects astrocytes and neurite formation in organotypic tissue cultures. *Brain research* 1564:22–32
- Johansson S, Strömberg I (2002) Guidance of dopaminergic neuritic growth by immature astrocytes in organotypic cultures of rat fetal ventral mesencephalon. *J Comp Neurol* 443:237–249
- Johansson S, Strömberg I (2003) Fetal lateral ganglionic eminence attracts one of two morphologically different types of tyrosine hydroxylase-positive nerve fibers formed by cultured ventral mesencephalon. *Cell Transplant* 12:243–255
- Kawano H, Ohyama K, Kawamura K, Nagatsu I (1995) Migration of dopaminergic neurons in the embryonic mesencephalon of mice. *Brain Res Dev Brain Res* 86:101–113
- Mahalik TJ, Finger TE, Stromberg I, Olson L (1985) Substantia nigra transplants into denervated striatum of the rat: ultrastructure of graft and host interconnections. *J Comp Neurol* 240:60–70
- Missale C, Nash SR, Robinson SW, Jaber M, Caron MG (1998) Dopamine receptors: from structure to function. *Physiol Rev* 78:189–225
- Nikkhah G, Olsson M, Eberhard J, Bentlage C, Cunningham MG, Björklund A (1994) A microtransplantation approach for cell suspension grafting in the rat parkinson model: a detailed account of the methodology. *Neurosci* 63:57–72
- Olson L, Seiger A (1972) Early prenatal ontogeny of central monoamine neurons in the rat: fluorescence histochemical observations. *Zeitschrift für Anatomie und Entwicklungsgeschichte* 137:301–316
- Perlow MJ, Freed WJ, Hoffer BJ, Seiger A, Olson L, Wyatt RJ (1979) Brain grafts reduce motor abnormalities produced by destruction of nigrostriatal dopamine system. *Science* 204:643–647
- Reichenbach AWH (2009) Structural association of astrocytes with neurons and vasculature: defining territorial boundaries. In: Pappas VHP (ed) *Astrocytes in (patho) physiology of the nervous system*. Springer, New York, pp 251–286
- Sauvageot CM, Stiles CD (2002) Molecular mechanisms controlling cortical gliogenesis. *Curr Opin Neurobiol* 12:244–249
- Sharaf A, Bock HH, Spittau B, Bouche E, Kriegstein K (2013) ApoER2 and VLDLR are required for mediating reelin signalling pathway for normal migration and positioning of mesencephalic dopaminergic neurons. *PLoS One* 8:e71091
- Shults CW, Hashimoto R, Brady RM, Gage FH (1990) Dopaminergic cells align along radial glia in the developing mesencephalon of the rat. *Neuroscience* 38:427–436
- Specht LA, Pickel VM, Joh TH, Reis DJ (1981) Light-microscopic immunocytochemical localization of tyrosine hydroxylase in prenatal rat brain. I. Early ontogeny. *J Comp Neurol* 199:233–253
- Strömberg I, Bickford P (1996) Reduced ageing effects of striatal neuronal discharge rate by aged ventral mesencephalic grafts. *NeuroReport* 7:693–696
- Strömberg I, Johnson S, Hoffer B, Olson L (1985) Reinnervation of dopamine-denervated striatum by substantia nigra transplants: immunohistochemical and electrophysiological correlates. *Neuroscience* 14:981–990
- Strömberg I, Almqvist P, Bygdeman M, Finger TE, Gerhardt G, Granholm AC, Mahalik TJ, Seiger A, Hoffer B, Olson L (1988) Intracerebral xenografts of human mesencephalic tissue into athymic rats: immunochemical and in vivo electrochemical studies. *Proc Natl Acad Sci USA* 85:8331–8334
- Strömberg I, Bygdeman M, Almqvist P (1992) Target-specific outgrowth from human mesencephalic tissue grafted to cortex or ventricle of immunosuppressed rats. *J Comp Neurol* 315:445–456
- Tien AC, Tsai HH, Molofsky AV, McMahon M, Foo LC, Kaul A, Dougherty JD, Heintz N, Gutmann DH, Barres BA, Rowitch DH (2012) Regulated temporal-spatial astrocyte precursor cell proliferation involves BRAF signalling in mammalian spinal cord. *Development* 139:2477–2487
- Vasudevan A, Won C, Li S, Erdelyi F, Szabo G, Kim KS (2012) Dopaminergic neurons modulate GABA neuron migration in the embryonic midbrain. *Development* 139:3136–3141
- Voorn P, Kalsbeek A, Jorritsma-Byham B, Groenewegen HJ (1988) The pre- and postnatal development of the dopaminergic cell groups in the ventral

mesencephalon and the dopaminergic innervation of the striatum of the rat. *Neuroscience* 25:857–887

Victorin K, Brundin P, Sauer H, Lindvall O, Björklund A (1992) Long distance directed axonal growth from human dopaminergic mesencephalic neuroblasts implanted along the nigrostriatal pathway in 6-hydroxydopamine lesioned adult rats. *J Comp Neurol* 323:475–494

Yang S, Edman LC, Sanchez-Alcaniz JA, Fritz N, Bonilla S, Hecht J, Uhlen P, Pleasure SJ, Villaescusa JC, Marin O, Arenas E (2013) Cxcl12/Cxcr4 signaling controls the migration and process orientation of A9-A10 dopaminergic neurons. *Development* 140:4554–4564

Submit your manuscript to a SpringerOpen[®] journal and benefit from:

- ▶ Convenient online submission
- ▶ Rigorous peer review
- ▶ Immediate publication on acceptance
- ▶ Open access: articles freely available online
- ▶ High visibility within the field
- ▶ Retaining the copyright to your article

Submit your next manuscript at ▶ springeropen.com
