

RESEARCH

Open Access

# Time to definitive diagnosis of breast cancer in Latina and non-Hispanic white women: the six cities study

Amelie G Ramirez<sup>1,7\*</sup>, Eliseo J Pérez-Stable<sup>2</sup>, Gregory A Talavera<sup>3</sup>, Frank J Penedo<sup>4</sup>, J Emilio Carrillo<sup>5</sup>, Maria E Fernandez<sup>6</sup>, Edgar Muñoz<sup>1</sup>, Dorothy Long Parma<sup>1</sup>, Alan EC Holden<sup>1</sup>, Sandra San Miguel de Majors<sup>1</sup>, Anna Nápoles<sup>2</sup>, Sheila F Castañeda<sup>3</sup> and Kipling J Gallion<sup>1</sup>

## Abstract

Time delay after an abnormal screening mammogram may have a critical impact on tumor size, stage at diagnosis, treatment, prognosis, and survival of subsequent breast cancer. This study was undertaken to evaluate disparities between Latina and non-Hispanic white (NHW) women in time to definitive diagnosis of breast cancer after an abnormal screening mammogram, as well as factors contributing to such disparities.

As part of the activities of the National Cancer Institute (NCI)-funded *Redes En Acción* research network, clinical records of 186 Latinas and 74 NHWs who received abnormal screening mammogram results were reviewed to determine the time to obtain a definitive diagnosis. Data was obtained from participating clinics in six U.S. cities and included demographics, clinical history, and mammogram characteristics. Kaplan-Meier estimates and Cox proportional hazards models were used to test differences in median time to definitive diagnosis by ethnicity after adjusting for clinic site, demographics, and clinical characteristics.

Time-to-event analysis showed that Latinas took 2.2 times longer to reach 50% definitively diagnosed with breast cancer relative to NHWs, and three times longer to reach 80% diagnosed ( $p=0.001$ ). Latinas' median time to definitive diagnosis was 60 days compared to 27 for NHWs, a 59% gap in diagnosis rates (adjusted Hazard Ratio [aHR] = 1.59, 95% CI = 1.09, 2.31;  $p=0.015$ ). BI-RADS-4/5 women's diagnosis rate was more than twice that of BI-RADS-3 (aHR = 2.11, 95% CI = 1.18, 3.78;  $p=0.011$ ).

Disparities in time between receipt of abnormal screening result and definitive diagnosis adversely affect Latinas compared to NHWs, and remain significant after adjusting for demographic and clinical variables. With cancer now the leading cause of mortality among Latinos, a greater need exists for ethnically and culturally appropriate interventions like patient navigation to facilitate Latinas' successful entry into, and progression through, the cancer care system.

**Keywords:** Health disparities, Breast cancer screening, Definitive diagnosis, Latinas, Six cities study

\* Correspondence: ramirezag@uthscsa.edu

<sup>1</sup>Institute for Health Promotion Research, Department of Epidemiology and Biostatistics, The University of Texas Health Science Center at San Antonio, San Antonio, TX, USA

<sup>7</sup>The National Latino Cancer Research Network, Institute for Health Promotion Research, Cancer Therapy & Research Center, The University of Texas Health Science Center at San Antonio, 7411 John Smith Drive, Suite 1000, San Antonio, TX 78230, USA

Full list of author information is available at the end of the article

## Introduction

Despite notable progress in the overall health of Americans in general, disparities continue to persist in the burden of illness and death experienced by Hispanics/Latinos, as well as other ethnic groups, compared to the U.S. population as a whole (Agency for Healthcare Research and Quality 2008). With an estimated current population of more than 45 million, Latinos are one of the largest, youngest, and fastest-growing minority groups in the nation, representing about 15% of the total U.S. population (U.S. Census Bureau, American Community Survey 2006). It has been projected that by the year 2050, Latinos will represent a quarter of the population of the entire country (102.6 million) (U.S. Census Bureau 2004). Cancer recently superseded heart disease as the leading cause of morbidity and premature death in this minority group (Siegel et al. 2012), and breast cancer is the most frequently diagnosed cancer among Latinas (American Cancer Society 2009).

Breast cancer mortality has been declining steadily since 1990 by an average of 2.3% per year (Howe et al. 2006). However, while Latina women have lower breast cancer incidence (90.2 per 100,000) than do non-Hispanic white (NHW) or African American women (126.9 and 116.1 per 100,000, respectively), the decrease in incidence has been smaller (0.9% compared to 1.5% per year for NHWs). The disease continues to be the leading cause of cancer mortality among Latinas, with a five-year cause-specific survival rate 5% lower than NHW women (American Cancer Society 2009; Howe et al. 2006; American Cancer Society 2011a). Reduction in mortality is directly related to detection of early-stage breast cancer, because treatment is more effective and treatment options and survival rates are greater at that time (Vahabi 2003). There is strong evidence from clinical trials that regular screening mammography reduces mortality through early detection and treatment (Elmore et al. 2005; Feig 2005; U.S. Preventive Services Task Force 2002; Green & Taplin 2003; Knutson & Steiner 2007). Historically, Latina women have been less likely to utilize mammography services than NHW women and, consequently, more likely to be diagnosed at a more advanced stage of the disease, when fewer treatment options are available (Gorin et al. 2006). In 2010, Latina women aged 40 and older lagged behind both NHW and African American women (46.5% compared to 51%), in reporting they had a screening mammogram in the past year according to National Cancer Institute (NCI) Physician Data Query guidelines (PDQ Screening and Prevention Editorial Board 2012) and American Cancer Society (ACS) guidelines (American Cancer Society 2011b). This difference disappeared in two nationwide surveys using updated U.S. Preventive Services Task Force (USPSTF) recommendations of biennial screening for women aged 50–74 (U.S. Preventive Services Task Force, Screening for

breast cancer 2009): in the National Health Interview Survey (NHIS), 69.7% of Latinas and 72.8% of NHWs aged 50–74 reported having a mammogram in the past two years (2012a), while the Behavioral Risk Factor Surveillance System (BRFSS) reported an equal proportion (75.4%) of Latinas and NHWs aged  $\geq 40$  screened (Miller et al. 2012). However, low-income Latinas and other ethnic minority women are more likely to delay or miss follow-up appointments (Ell et al. 2007; Guerra et al. 2005; Jones et al. 2005). These behaviors may result in poorer outcomes and higher mortality (American Cancer Society 2009; Blackman & Masi 2006; Newman & Martin 2007; Ramirez et al. 2000).

Many barriers contribute to Latinas' lack of, or delay in, follow-up when breast abnormalities are first seen (Kaplan et al. 2005), as well as delay in treatment following diagnosis (Fedewa et al. 2011; Shavers & Brown 2002). Patients face the difficult challenge of understanding and navigating the highly complex nature of, and the structural barriers inherent in, the U.S. health care system, while dealing with the emotional and physical aspects of their health concerns and needs (Heckman et al. 2004). Barriers include knowledge and culturally-specific health beliefs leading to mistrust of the healthcare system and clinical research trials; competing health, family, and work responsibilities (Steinberg et al. 2006); reduced access to care; lack of insurance and social support; cost; language issues; lack of transportation and child care; psychological distress; poor physician-patient communication; and system inefficiencies (Gorin et al. 2006; Ell et al. 2007). Patients often become frustrated or discouraged and choose to discontinue the breast care they need. Although the majority of women lost to follow-up after an abnormal mammogram will eventually return to the system, they will most likely present with a more advanced stage of the disease.

This study was undertaken to evaluate disparities in time to definitive diagnosis after an abnormal screening mammogram between Latina and NHW women in six U.S. cities participating in the NCI-funded *Redes En Acción* research network (the Six City Study) (Ramirez et al. 2012), as well as factors contributing to such disparities. We hypothesized that: 1) Latinas experience significant delays in obtaining definitive diagnosis of breast cancer compared with NHWs; and 2) these delays are a result of a combination of patient- and clinic-associated factors.

## Materials and methods

### Study design and procedures

Between October 2006 and December 2007, after obtaining Institutional Review Board (IRB) approvals at UTHSCSA and each participating study site, we conducted a retrospective cohort study at six different sites: San Francisco, San Diego, Miami, New York, and Harlingen and San Antonio, Texas. Each site had high

concentrations of Latinos. NCI-funded project *Redes* partnered with community clinics in those areas and conducted an initial review of 366 medical records of Latina and NHW women who received abnormal screening mammograms, in order to compare the two ethnic groups on the time to obtain a definitive diagnosis of breast cancer.

Inclusion criteria were Latina and NHW women aged >30 with an abnormal screening mammogram. Mammograms were defined as “abnormal” if there were suspicious or incomplete results according to the American College of Radiology (ACR) Breast Imaging and Reporting Data Systems (BI-RADS) (Eberl et al. 2006). Categories included were BI-RADS-0 (“indeterminate”), -3 (“probably benign”), -4 (“suspicious”) and -5 (“highly suggestive of malignancy”).

Medical records were reviewed to obtain age, educational attainment, language preference, dates and results of abnormal breast cancer screening and follow-up diagnostic procedures (e.g. mammogram, MRI, fine-needle aspiration, biopsy), and personal and/or family history of breast cancer. A structured form and a companion computer program were developed in Microsoft Access and distributed to each site to enter the data. The data collection was performed by a trained research staff member, under the supervision of the investigators. This protocol did not deviate from the local standard of care given that it only consisted of data collection. Records were excluded when time to definitive diagnosis (see below) could not be estimated.

Of the 366 original charts reviewed, 30% (n=106) were excluded due to (1) unavailability of mammogram results (n=72), or (2) BI-RADS-1 (“normal;” n=11) or -2 (“benign;” n=23) readings. Only 260 records (186 of Latinas and 74 of NHWs) were retained for analyses after assessment of data quality and completeness.

### Study measures

The main outcome was ‘time to definitive diagnosis,’ calculated as number of days from index abnormal mammogram until definitive diagnosis for breast cancer was reached. ‘Index’ referred to the most recent test performed prior to commencing the diagnostic process (Bever et al. 2009). Definitive diagnosis was defined as biopsy with pathology report, or clinical determination indicating no further need for evaluation, in accordance with protocol (Freund et al. 2008). Clinical evaluation was included to account for variation in clinical practices. Because of the variability in the number of days to definitive diagnosis, and the likelihood of outliers that would result in skewed data, we censored this outcome at a maximum of 365 days. Other studies of breast cancer diagnosis indicate this exceeds adequate follow-up periods regarding clinical significance (Hershman et al.

2006; National Cancer Institute 2010; Perez-Stable et al. 2012). If diagnosis did not occur within the time frame of the study, cases remained undiagnosed and time was calculated as the interval from their date of index abnormal mammogram to the last known visit date or the end of the study, whichever occurred first. For women with BI-RADS-3 mammogram results and time to diagnosis >180 days, time to definitive diagnosis was shifted backward 180 days to account for the ACR-recommended short-interval follow-up (repeat mammogram in six months) (Aiello Bowles 2010; Battaglia et al. 2010). These data were derived from patient clinical records, scheduling information, and key informant interviews with healthcare personnel from the clinic. Records were excluded from analysis when time to definitive diagnosis could not be calculated from available information, and were compared to included records on all the independent variables for evaluation of potentially induced bias.

The independent variable (ethnicity) was coded as ‘Latina’ and ‘Non-Hispanic white’ using a number of sources as follows: 82% of values for ethnicity were identified directly from a medical chart-specific ethnic note. If not recorded as such, ethnicity was imputed from self-reported national origin, Spanish surname, or primary language given elsewhere in the chart (Eschbach et al. 2005).

Covariate measures included demographic variables: age (30–39, 40–49, 50–59, 60–69, 70+ years), insurance status (Medicaid/Medicare only, Medicare and private, private only, and no insurance), and language use (English only, more English than Spanish, English and Spanish equally, more Spanish than English, Spanish only, and other language spoken). Education level was removed as a covariate due to the preponderance of missing data (80% of the sample). Multiple categories were presented to provide as much detail as possible. Clinical characteristics serving as covariates included personal and family history (FH) of breast cancer (yes/no), breast density (almost entirely fat, scattered fibroglandular densities, and heterogeneous/extremely dense), BI-RADS category, and study site (1–6).

### Statistical analyses

Descriptive group characteristics were used to summarize the data. Chi-square tests for categorical variables and Student t-tests for continuous variables were conducted to assess differences between groups. Median time to diagnosis and its corresponding 95% confidence interval (CI) was used to describe duration of the diagnostic period. Kaplan-Meier estimates for the proportion of undiagnosed women at different times were calculated across each level of the independent variables, and compared using the log-rank test. Time to diagnosis between Latinas and NHWs was then compared using Cox proportional hazards models to obtain adjusted estimates of hazard ratios (aHRs), controlling for significant covariates. Shared-frailty models were

used to account for within-site correlation (Duchateau & Janssen 2008; Therneau & Grambsch 2000). Hazard ratios >1.0 are consistent with a shorter time to diagnosis. All analyses were conducted using Stata Version 12.1 (2012, StataCorp LP, College Station, TX).

## Results

To identify factors influencing time to definitive diagnosis, we reviewed clinic records of Latinas and NHWs with abnormal screening mammograms from six U.S. cities participating in the NCI-funded *Redes En Acción*

**Table 1 Sample demographics and clinical characteristics**

	Latina Women (n=186 )		Non-Hispanic White Women (n=74 )		Total (n=260 )		$\chi^2 / t$	<i>p</i>
	n	%	n	%	n	%		
<b>Age</b>							11.79	<b>0.019</b>
30 – 39	9	4.8	2	2.7	11	4.2		
40 – 49	57	30.7	17	23.0	74	28.5		
50 – 59	64	34.4	24	32.4	88	33.9		
60 – 69	42	22.6	17	23.0	59	22.7		
70+	9	4.8	13	17.6	22	8.5		
N/A	5	2.7	1	1.4	6	2.3		
Age in years (mean, SD)	53.5	9.5	58.1	10.9	54.8	10.1	-3.38	<b>&lt;0.001</b>
<b>Insurance</b>							40.94	<b>&lt;0.001</b>
Medicaid/Medicare	36	19.4	6	8.1	42	16.2		
Medicare + private	7	3.8	20	27.0	27	10.4		
Private only	31	16.7	21	28.4	52	20.0		
No insurance	112	60.2	27	36.5	139	53.5		
<b>History of BC</b>							1.87	0.17
Yes	11	5.9	8	10.8	19	7.3		
No	175	94.1	66	89.2	241	92.7		
<b>Family History of BC</b>							14.52	<b>&lt;0.001</b>
Yes	18	9.7	21	28.4	39	15.0		
No	168	90.3	53	71.6	221	85.0		
<b>Breast density</b>							3.90	0.14
Almost entirely fat	8	4.3	4	5.4	12	4.6		
Scattered fibroglandular densities	42	22.6	20	27.0	62	23.9		
Heterogeneous/extremely dense	62	33.3	14	18.9	76	29.2		
N/A	74	39.8	36	48.7	110	42.3		
<b>BI-RADS</b>							2.18	0.33
BI-RADS 0	35	18.8	9	12.2	44	16.9		
BI-RADS 3	35	18.8	18	24.3	53	20.4		
BI-RADS 4/5	116	62.4	47	63.5	163	62.7		
<b>Study Site</b>							49.07	<b>&lt;0.001</b>
1	20	10.8	25	33.8	45	17.3		
2	34	18.3	*	*	34	13.1		
3	19	10.2	9	12.2	28	10.8		
4	44	23.7	29	39.2	73	28.1		
5	33	17.7	11	14.9	44	16.9		
6	36	19.4	*	*	36	13.9		

**Note:** SD = standard deviation; N/A = not documented in medical record; HS = High School; BC = breast cancer; BI-RADS = Breast Imaging and Reporting Data Systems; \* = no patient records reported.

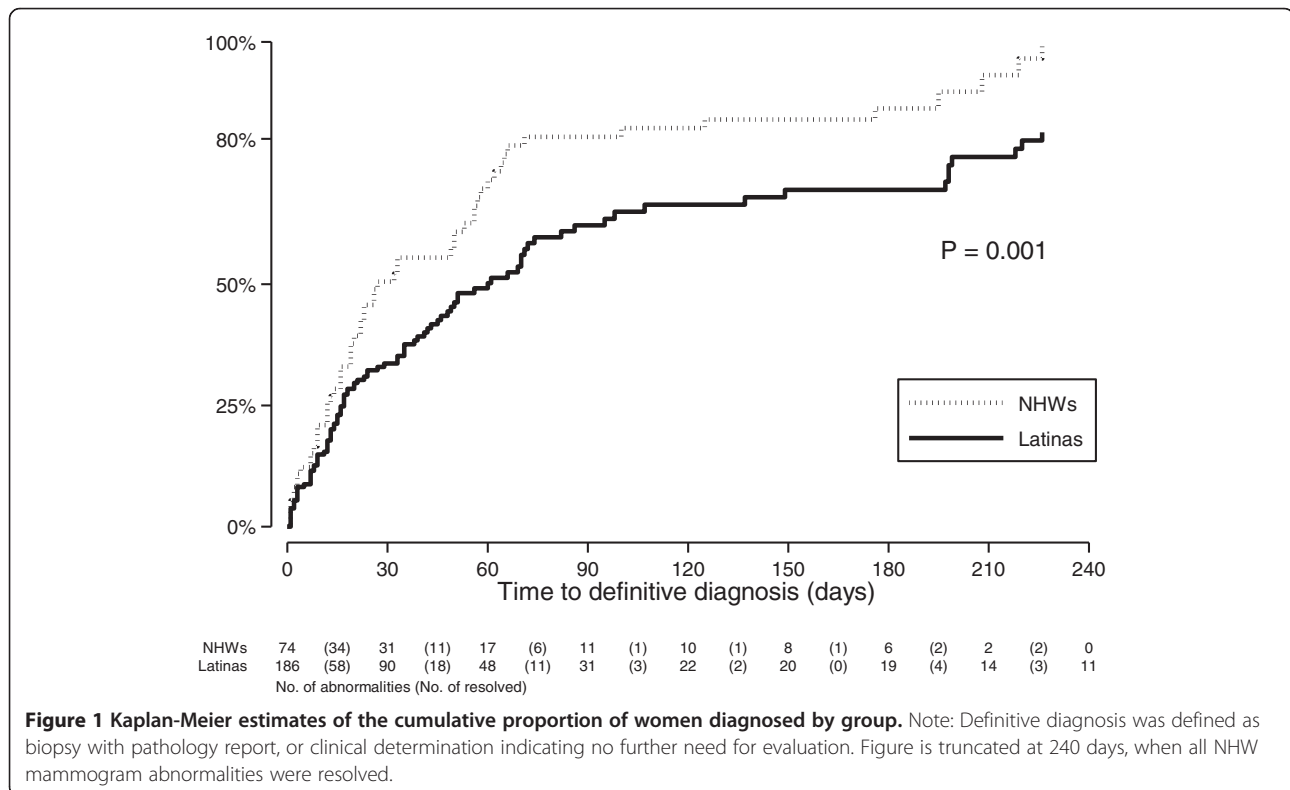
research network. A total of 15 clinics contributed data to the study (data not shown). Clinic size ranged from small practices (5–30 physicians) in suburban or small-to-medium-sized metropolitan areas, to hospitals and medical centers in urban areas (100-500+ bed capacity and 150–1500 physicians). Approximately half the clinics were public non-federal government facilities, and the rest were private non-profits. The percentage of identified Latinas attending these facilities ranged from 10% in Brooklyn, 25% in the Bay Area, 45% in Miami, to >90% at the San Diego and Texas sites.

Table 1 shows sample demographics and clinical characteristics. Data was collected from a total of 260 women, 72% (n=186) of whom were Latina. Mean age was 53.5 years (SD=9.5) for Latinas, significantly younger than NHWs (mean 58.1, SD=10.9,  $p < 0.001$ ). Most Latina women had no health insurance (60% vs. 37% of NHWs,  $p < 0.001$ ). Among Latinas, significantly more women (33%) spoke predominantly or only Spanish compared to English (16%;  $\chi^2=51.07$ ,  $p < 0.001$ ; data not shown). The majority of both groups had no personal history (94% and 89% of Latinas and NHWs, respectively), or FH (90% and 72% of Latinas and NHWs, respectively), of breast cancer. Mammography results revealed no significant differences in breast density ( $\chi^2=3.90$ ,  $p=0.14$ ) or BI-RADS category ( $\chi^2=2.18$ ,  $p=0.33$ ). Distribution of participants by study site is also shown.

Figure 1 shows the Kaplan-Meier estimates of the cumulative proportion of diagnosed women by group at different times. Time for 50% of Latinas to reach a definitive diagnosis was 60 days (SE=8.14; 95% CI 45, 74), significantly longer than NHWs (27 days; SE=5.26; 95% CI 19, 53) (see also Table 2). This gap increased when time for 80% of women to reach diagnosis was calculated, where it took 226 days for Latinas and 71 days for NHWs ( $\chi^2=10.32$ ,  $p=0.001$ ).

Table 2 shows median time to definitive diagnosis in days by ethnicity, sample demographics, and clinical characteristics. Ethnicity ( $\chi^2=10.32$ ,  $p=0.001$ ), insurance ( $\chi^2=8.06$ ,  $p=0.04$ ), and BI-RADS category ( $\chi^2=18.31$ ,  $p < 0.001$ ) were associated with time to definitive diagnosis in the log-rank test. There was no association based on age category, personal or FH of breast cancer, or abnormal breast density on mammography.

Table 3 shows adjusted hazard ratios (aHR) for Cox proportional hazards models of median time to definitive diagnosis. Only covariates that were significantly different by log-rank test (Table 2) were included in the models. When adjusted by site only, ethnicity and more severe BI-RADS category were significantly associated with time to definitive diagnosis. NHWs had a 49% higher rate of definitive diagnosis of breast cancer than Latinas (95% CI 1.03, 2.13;  $p=0.035$ ), and women with BI-RADS-4/5 mammograms likewise were diagnosed at a higher rate than



**Table 2 Median time to definitive diagnosis (days since index abnormal mammogram) – By ethnicity, demographics, and clinical characteristics**

	Latina Women (n=186)			Non-Hispanic White Women (n=74)			Total (n=260)			Log-rank test	
	Median	95% CI	CI	Median	95% CI	CI	Median	95% CI	CI	$\chi^2$	<i>p</i>
<b>Ethnicity</b>	60	45	74	27	19	53	50	38	60	<b>10.32</b>	<b>0.001</b>
<b>Age (years)</b>										7.53	0.11
30 – 39	33	3	-	12	12	-	20	7	51		
40 – 49	61	35	218	32	3	125	51	32	82		
50 – 59	70	35	149	22	9	50	50	29	71		
60 – 69	60	35	197	58	19	100	60	38	95		
70+	27	7	-	27	7	62	27	16	53		
N/A	-	17	-	-	-	-	195	17	-		
<b>Insurance</b>										<b>8.06</b>	<b>0.04</b>
Medicaid/Medicare	51	24	199	23	9	-	46	24	197		
Medicare + private	218	72	-	60	27	-	64	53	218		
Private only	198	39	260	33	12	58	66	35	198		
No insurance	48	27	70	20	8	32	42	20	56		
<b>History of BC</b>										0.08	0.78
Yes	13	5	198	19	3	-	19	11	197		
No	60	45	74	32	20	53	50	39	60		
<b>Family History of BC</b>										0.30	0.58
Yes	46	29	260	26	12	62	46	16	64		
No	61	43	74	32	19	56	51	38	65		
<b>Breast density</b>										2.73	0.25
Almost entirely fat	13	5	-	23	7	-	18	7	35		
Scattered fibroglandular densities	51	24	86	19	2	32	35	16	56		
Heterogeneous/extremely dense	50	18	199	22	9	-	42	18	61		
N/A	149	66	198	58	23	66	66	56	149		
<b>BI-RADS Category</b>										<b>18.31</b>	<b>&lt;0.001</b>
BI-RADS-0	98	70	-	60	4	-	82	60	107		
BI-RADS-3	95	74	-	66	19	-	125	66	-		
BI-RADS-4/5	38	20	50	26	16	50	33	22	46		

**Note:** N/A = not documented in medical record; HS = High School; BC = breast cancer; - = not enough data to estimate confidence interval; BI-RADS = Breast Imaging and Reporting Data Systems.

BI-RADS-3 (aHR = 1.95; 95% CI 1.10, 3.49; *p*=0.023). After adjusting for both site and BI-RADS, the rate of diagnosis for NHWs remained significantly higher than for Latinas (aHR=1.59; 95% CI 1.09, 2.31; *p*=0.015). BI-RADS-4/5 also led to a higher rate of definitive diagnosis in the multivariate model (aHR = 2.11; 95% CI 1.18, 3.78; *p*=0.011). Insurance status did not influence time to definitive diagnosis.

## Discussion

Our study results indicate that Latina ethnicity plays a significant role in delaying median time to diagnosis of breast cancer in a multi-site sample. This supersedes age, education, insurance status, personal or family history of breast

cancer, and mammographic breast density abnormalities. In contrast, results from the CDC's National Breast and Cervical Cancer Early Detection Program (NBCCEDP) (Caplan et al. 2000) showed diagnosis occurring in <60 - days for a majority of women regardless of ethnicity. One possible reason for this difference is that none of our clinic sites participated in the CDC program. Another explanation could be the relatively late arrival of Latina-focused breast cancer research. Most disparity studies in the past six years have compared white and African American populations (Gorin et al. 2006; Blackman & Masi 2006; Newman & Martin 2007), and the ACS's latest Facts and Figures publication likewise focused on these two groups (American Cancer Society 2011c). In a recent study by

**Table 3 Factors associated with time to definitive diagnosis of breast cancer**

	Site-adjusted hazard ratios				Multivariate-adjusted model*			
	aHR	95% CI	CI	p	aHR	95% CI	CI	p
<b>Ethnicity</b>								
Latina	1.00	Ref.			1.00	Ref.		
Non-Hispanic White	1.49	1.03	2.13	<b>0.035</b>	1.59	1.09	2.31	<b>0.015</b>
<b>Insurance</b>								
Medicaid/Medicare	1.04	0.65	1.65	0.873				
Medicare + private	0.98	0.47	2.06	0.961				
Private only	0.92	0.56	1.51	0.737				
No insurance	1.00	Ref.						
<b>BI-RADS</b>								
BI-RADS 0	1.60	0.74	3.45	0.231	1.80	0.83	3.90	0.137
BI-RADS 3	1.00	Ref.			1.00	Ref.		
BI-RADS 4/5	1.95	1.10	3.49	<b>0.023</b>	2.11	1.18	3.78	<b>0.011</b>

**Note:** aHR = adjusted Hazard Ratio; Ref. = reference category; BI-RADS = Breast Imaging and Reporting Data Systems. \* = adjusted for site and BI-RADS category.

one of our collaborators, in which Latinas comprised 18% of women surveyed, 84% of BI-RADS-4/5 women were diagnosed by the recommended 60-day limit. Women with BI-RADS-3 results took significantly longer (183 days vs. 29 for BI-RADS-4/5) to reach diagnosis or resolution as defined by the authors (Perez-Stable et al. 2012). This is consistent with our own findings in this study and elsewhere (Ramirez et al. 2012).

Time-to-event analyses have been done to examine breast cancer recurrence mediated by cancer subtype (Buist et al. 2010), effects of patient navigation (PN) on time to diagnostic resolution in breast and cervical cancer (Markossian et al. 2012), and surgical risk reduction in women with familial ovarian cancer (Manchanda et al. 2012). To our knowledge, this is the first study using time-to-event analysis to examine the disparity in time to definitive diagnosis of breast cancer between Latinas and NHWs. Our data showed an increasing time lag for Latinas relative to NHWs, from twice as long for 50% of Latinas to be diagnosed, to three times to achieve 80% diagnosed.

Limitations of our study include its retrospective design and dependence on medical records, resulting in the unavailability (N/A) of specific data (e.g., educational attainment – see Table 1) across study sites. Thus, site-by-site comparisons could not be made; instead, a pooled analysis was done to interpret available data. This also contributed to the imbalance in total number of eligible Latina and NHW records examined across sites ( $\chi^2=49.07$ ,  $p<0.001$ ), which likely accounts for the significant differences observed in 50% of group characteristics. Moreover, our conclusions are limited to Latinas and NHWs, to the exclusion of other minority populations (e.g., African-Americans), in whom the substantial challenge to decrease breast cancer incidence, morbidity

and mortality remains (Blackman & Masi 2006; Fedewa et al. 2011; 2012b).

Studies have repeatedly shown that cancer places an unequal burden among women who are of lower socioeconomic status and/or ethnic minorities (Jones et al. 2005; Caplan et al. 2000; Chang et al. 1996; Kerlikowske 1996). These disparities manifest themselves in lower survival rates and have been shown to result from a cluster of circumstances, including minority status and marginalization, inability to access and adequately utilize medical resources, unavailability of those resources in some locales, late diagnoses and more severe disease, and similar delays in treatment ultimately leading to higher rates of death (Eberl et al. 2006; Peres 2010; Karliner & Kerlikowske 2007). Our study highlights the significance of ethnicity in delaying breast cancer diagnosis among Latinas, who represent a minority group considered the youngest and fastest-growing in the U.S. (U.S. Census Bureau, American Community Survey 2006). Our results underscore the clear need for increased Latina-targeted breast cancer prevention and screening services as part of a multi-level approach to cancer care delivery (Taplin et al. 2012) that ultimately improves quality of care by improving outcomes.

One of the Healthy People 2020 objectives is to increase breast cancer screening by 10% from the current 73.7% of females who receive guideline-based screening (Centers for Disease Control and Prevention and National Center for Health Statistics 2012a). However, for Latinas the current age-adjusted rate is only 68.3% (Centers for Disease Control and Prevention and National Center for Health Statistics 2012b), thus necessitating even greater efforts to reach this goal. Moreover, with cancer now the leading cause of death among Latinos (Siegel et al. 2012), research and intervention efforts need to expand to decrease lag time between index

abnormal mammogram and definitive diagnosis. Suggested interventions to ameliorate disparities have included counseling, health education, and PN (Blackman & Masi 2006). Such interventions, applied correctly and in a timely fashion to specific target populations (Ramirez et al. 2012) and clinical challenges (Freeman 2012; Fiscella et al. 2012; Battaglia et al. 2012; Paskett et al. 2012) should streamline the continuum of cancer care from screening through survivorship.

#### Competing interest

The authors declare that they have no conflict of interest.

#### Authors' contributions

AGR (PI) and EJP, GAT, FJP, JEC, MEF, KJG (Co-PIs) were responsible for study design and implementation, initial data analysis and manuscript preparation. EM, DLP and AEH conducted data analyses and prepared/revised the manuscript text, figure and tables. SSM coordinated study implementation at the national level and assisted in data collection. AN and SFC managed the study at their respective sites and assisted in data collection. All authors read and approved the final manuscript.

#### Acknowledgments

The authors thank the *Redes en Acción* Community Advisory Panel and all members of the *Redes* research team. Special thanks go to all the site program coordinators: Maria Borrero, MS; Victor A. Carrillo, MPH; and Kay Haverlah, BA.

#### Grant support

This research was made possible by grants from *Redes En Acción*: The National Latino Cancer Research Network (U01 CA114657-05 and U54 CA153511) and the Cancer Therapy & Research Center at The University of Texas Health Science Center at San Antonio (2 P30 CA054174-17).

#### Author details

<sup>1</sup>Institute for Health Promotion Research, Department of Epidemiology and Biostatistics, The University of Texas Health Science Center at San Antonio, San Antonio, TX, USA. <sup>2</sup>Division of General Internal Medicine, Medical Effectiveness Research Center for Diverse Populations, Department of Medicine, University of California, San Francisco, CA, USA. <sup>3</sup>Institute for Behavioral and Community Health, Graduate School of Public Health, San Diego State University, San Diego, CA, USA. <sup>4</sup>Department of Medical Social Sciences, Northwestern University, Chicago, IL, USA. <sup>5</sup>Weill Cornell Medical College, Cornell University, New York, NY, USA. <sup>6</sup>Center for Health Promotion and Prevention Research, University of Texas – Houston Health, Science Center School of Public Health, Houston, TX, USA. <sup>7</sup>The National Latino Cancer Research Network, Institute for Health Promotion Research, Cancer Therapy & Research Center, The University of Texas Health Science Center at San Antonio, 7411 John Smith Drive, Suite 1000, San Antonio, TX 78230, USA.

Received: 12 February 2013 Accepted: 15 February 2013

Published: 5 March 2013

#### References

- Agency for Healthcare Research and Quality (2008) National Healthcare Disparities Report, 2007. Agency for Healthcare Research and Quality, Rockville, MD
- Aiello Bowles EJ (2010) Recommendation for short-interval follow-up examinations after a probably benign assessment: is clinical practice consistent with BI-RADS guidance? *AJR Am J Roentgenol* 194:1152–1159
- American Cancer Society (2009) Cancer Facts and Figures for Hispanics/Latinos 2009–2011. Available from: <http://www.cancer.org/acs/groups/content/@nho/documents/document/ffhispanicslatinos20092011.pdf>
- American Cancer Society (2011a) Cancer Prevention and Early Detection Facts and Figures 2011. Available from: <http://www.cancer.org/acs/groups/content/@epidemiologysurveillance/documents/document/acspc-029459.pdf>
- American Cancer Society (2011b) Breast Cancer Facts and Figures 2011–2012., Available from: <http://www.cancer.org/acs/groups/content/@epidemiologysurveillance/documents/document/acspc-030975.pdf>
- American Cancer Society (2011c) Breast Cancer Facts and Figures. American Cancer Society, Inc, Atlanta, GA, 20122011
- Battaglia TA, Santana MC, Bak S et al (2010) Predictors of timely follow-up after abnormal cancer screening among women seeking care at urban community health centers. *Cancer* 116:913–921
- Battaglia TA, Bak SM, Heeren T et al (2012) Boston patient navigation research program: the impact of navigation on time to diagnostic resolution after abnormal cancer screening. *Cancer Epidemiol Biomarkers Prev* 21(10):1645–54. doi:10.1158/1055-9965.EPI-12-0532
- Beverly TB, Anderson BO, Bonaccio E et al (2009) NCCN clinical practice guidelines in oncology: breast cancer screening and diagnosis. *J Natl Compr Canc Netw* 7(10):1060–96
- Blackman DJ, Masi CM (2006) Racial and ethnic disparities in breast cancer mortality: are we doing enough to address the root causes? *J Clin Oncol* 24(14):2170–8. doi:10.1200/JCO.2005.05.4734
- Buist DS, Abraham LA, Barlow WE et al (2010) Diagnosis of second breast cancer events after initial diagnosis of early stage breast cancer. *Breast Cancer Res Treat* 124(3):863–73. doi:10.1007/s10549-010-1106-6
- Caplan LS, May DS, Richardson LC (2000) Time to diagnosis and treatment of breast cancer: results from the national breast and cervical cancer early detection program, 1991–1995. *Am J Public Health* 90(1):130–4
- Centers for Disease Control and Prevention and National Center for Health Statistics (2012a) Healthy People 2020 Topics and Objectives: Cancer Objective C-17. 2010 [cited 2012 23 October]; 2nd:[Increase the proportion of women who receive a breast cancer screening based on the most recent guidelines]. Available from: <http://www.healthypeople.gov/2020/topicsobjectives2020/objectiveslist.aspx?topicid=5>
- Centers for Disease Control and Prevention and National Center for Health Statistics (2012b) National Health Interview Survey: Breast cancer screening (percent). HP 2020 2008 [cited 2012 23 October]; Percent of women who receive a breast cancer screening based on the most recent guidelines, percent]. Available from: [http://www.healthindicators.gov/Indicators/Breastcancerscreening\\_507/Profile/Data](http://www.healthindicators.gov/Indicators/Breastcancerscreening_507/Profile/Data)
- Chang SW, Kerlikowske K, Napoles-Springer A et al (1996) Racial differences in timeliness of follow-up after abnormal screening mammography. *Cancer* 78:1395–1402
- Cronin KA, Richardson LC, Henley SJ et al (2012) Vital signs: racial disparities in breast cancer severity – United States, 2005–2009. *MMWR Morb Mortal Wkly Rep* 61:922–926
- Duchateau L, Janssen P (2008) The frailty model. *Statistics for biology and health*. Springer, New York, NY, p 336
- Eberl MM, Fox CH, Edge SB et al (2006) BI-RADS classification for management of abnormal mammograms. *J Am Board Fam Med* 19(2):161–164
- Eil K, Vourlekis B, Lee PJ et al (2007) Patient navigation and case management following an abnormal mammogram: a randomized clinical trial. *Prev Med* 44(1):p. 26–33. doi:S0091-7435(06)00327-6 [pii]10.1016/j.ypmed.2006.08.001
- Elmore JG, Armstrong K, Lehman CD et al (2005) Screening for breast cancer. *JAMA* 293(10):1245–56. doi:10.1001/jama.293.10.1245
- Eschbach K, Mahnken JD, Goodwin JS (2005) Neighborhood composition and incidence of cancer among Hispanics in the United States. *Cancer* 103(5):1036–44. doi:10.1002/cncr.20885
- Fedewa SA, Edge SB, Stewart AK et al (2011) Race and ethnicity are associated with delays in breast cancer treatment (2003–2006). *J Health Care Poor Underserved* 22(1):128–41. doi:10.1353/hpu.2011.0006
- Feig SA (2005) Screening mammography controversies: resolved, partly resolved, and unresolved. *Breast J* 11(Suppl 1):S3–6. doi:10.1111/j.1075-122X.2005.217161.x
- Fiscella K, Whitley E, Hendren S et al (2012) Patient navigation for breast and colorectal cancer treatment: a randomized trial. *Cancer Epidemiol Biomarkers Prev* 21(10):1673–81. doi:10.1158/1055-9965.EPI-12-0506
- Freeman HP (2012) The origin, evolution, and principles of patient navigation. *Cancer Epidemiol Biomarkers Prev* 21(10):1614–7. doi:10.1158/1055-9965.EPI-12-0982
- Freund KM, Battaglia TA, Calhoun E et al (2008) National cancer institute patient navigation research program: methods, protocol, and measures. *Cancer* 113(12):3391–9. doi:10.1002/cncr.23960
- Gorin SS, Heck JE, Cheng B et al (2006) Delays in breast cancer diagnosis and treatment by racial/ethnic group. *Arch Intern Med* 166(20):p. 2244–52. doi:166/20/2244 [pii]10.1001/archinte.166.20.2244



- Green BB, Taplin SH (2003) Breast cancer screening controversies. *J Am Board Fam Pract* 16(3):233–41
- Guerra CE, Krumholz M, Shea JA (2005) Literacy and knowledge, attitudes and behavior about mammography in Latinas. *J Health Care Poor Underserved* 16(1):152–66. doi:10.1353/hpu.2005.0012
- Heckman BD, Fisher EB, Monsees B et al (2004) Coping and anxiety in women recalled for additional diagnostic procedures following an abnormal screening mammogram. *Health Psychol* 23(1):42–8. doi:10.1037/0278-6133.23.1.42
- Hershman DL, Wang X, McBride R et al (2006) Delay in initiating adjuvant radiotherapy following breast conservation surgery and its impact on survival. *Int J Radiat Oncol Biol Physiol* 65:1353–1360
- Howe HL, Wu X, Ries LAG et al (2006) Annual report to the nation on the status of cancer, 1975–2003, featuring cancer among US Hispanic/Latino populations. *Cancer* 107(8):1711–1742
- Jones BA, Dailey A, Calvocoressi L et al (2005) Inadequate follow-up of abnormal screening mammograms: findings from the race differences in screening mammography process study (United States). *Cancer Causes Control* 16:809–821
- Kaplan C, Eisenberg M, Erickson P et al (2005) Barriers to breast abnormality follow-up: minority, low-income patients' and their providers' view. *Ethn Dis* 15:720–726
- Karliner LS, Kerlikowske K (2007) Ethnic disparities in breast cancer. *Womens Health (Lond Engl)* 3(6):679–88. doi:10.2217/17455057.3.6.679
- Kerlikowske K (1996) Timeliness of follow-up after abnormal screening mammography. *Breast Cancer Res Treat* 40(1):53–64
- Klabunde CN, Brown M, Ballard-Barbash R et al (2012) Cancer screening - United States, 2010. *Morb Mortal Wkly Rep* 61:41–45
- Knutson D, Steiner E (2007) Screening for breast cancer: current recommendations and future directions. *Am Fam Physician* 75(11):1660–6
- Manchanda R, Burnell M, Abdelraheim A et al (2012) Factors influencing uptake and timing of risk reducing salpingo-oophorectomy in women at risk of familial ovarian cancer: a competing risk time to event analysis. *BJOG* 119(5):527–36. doi:10.1111/j.1471-0528.2011.03257.x
- Markossian TW, Darnell JS, Calhoun EA (2012) Follow-up and timeliness after an abnormal cancer screening among underserved, urban women in a patient navigation program. *Cancer Epidemiol Biomarkers Prev* 21(10):1691–700. doi:10.1158/1055-9965.EPI-12-0535
- Miller JW, King JB, Joseph DA et al (2012) Breast cancer screening among adult women—behavioral risk factor surveillance system, united states, 2010. *MMWR Morb Mortal Wkly Rep* (61 Suppl):p. 46–50
- National Cancer Institute (2010) Cancer Trends Progress Report - 2009/2010 Update. 2010 April. Available from: <http://progressreport.cancer.gov>
- Newman LA, Martin IK (2007) Disparities in breast cancer. *Curr Probl Cancer* 31(3):134–56. doi:10.1016/j.crrprobcancer.2007.01.003
- Paskett ED, Katz ML, Post DM et al (2012) The ohio patient navigation research program: does the american cancer society patient navigation model improve time to resolution in patients with abnormal screening tests? *Cancer Epidemiol Biomarkers Prev* 21(10):1620–1628. doi:10.1158/1055-9965.EPI-12-0523
- PDQ Screening and Prevention Editorial Board (2012) National Cancer Institute: PDQ® Breast Cancer Screening. PDQ® Cancer Information Summaries. Screening 2012 03/30/2012 [cited 2013 01/09/2013]; Available from: <http://www.cancer.gov/cancertopics/pdq/screening/breast/healthprofessional>
- Peres J (2010) Mammography screening: after the storm, calls for more personalized approaches. *J Natl Cancer Inst* 102(1):9–11
- Perez-Stable E, Afaible-Munsuz A, Kaplan CP et al (2013) Factors influencing time to diagnosis after abnormal mammography in diverse women. *J Womens Health* 22(2):159–166. doi:10.1089/jwh.2012.3646
- Ramirez AG, Talavera GA, Villarreal R et al (2000) Breast cancer screening in regional hispanic populations. *Health Educ Res* 15(5):559–68
- Ramirez AG, Perez-Stable EJ, Talavera GA et al (2012) Navigating latinas with breast screen abnormalities to diagnosis: the Six cities study. *Cancer*. doi:10.1002/cncr.27912, Epub 10 December 2012
- Shavers VL, Brown ML (2002) Racial and ethnic disparities in the receipt of cancer treatment. *J Natl Cancer Inst* 94(5):334–57
- Siegel R, Naishadham D, Jemal A (2012) Cancer statistics for hispanics/latinos, 2012. *CA Cancer J Clin* 62(5). doi:10.3322/caac.21153
- Steinberg ML, Fremont A, Khan DC et al (2006) Lay patient navigator program implementation for equal access to cancer care and clinical trials: essential steps and initial challenges. *Cancer* 107(11):2669–77. doi:10.1002/cncr.22319
- Taplin SH, Yabroff KR, Zapka J (2012) A multilevel research perspective on cancer care delivery: the example of follow-up to an abnormal mammogram. *Cancer Epidemiol Biomarkers Prev* 21(10):1709–15. doi:10.1158/1055-9965.EPI-12-0265
- Therneau TM, Grambsch PM (2000) Modeling survival data: extending the Cox model. 1st ed. Statistics for Biology and Health. Springer, New York, NY
- U.S. Census Bureau (2004) U.S. Interim Projections by Age, Sex, Race, and Hispanic Origin: Table 1a Projected Population of the United States, by Race and Hispanic Origin – 2000 to 2050, cited 2013 02/18/2013; Available from: <http://www.census.gov/population/projections/data/national/usinterimproj.html>
- U.S. Census Bureau (2011) American Community Survey: Selected population profile in the United States: Hispanic or Latino, cited 2013 02/18/2013; Available from: [http://factfinder2.census.gov/faces/tableservices/jsf/pages/productview.xhtml?pid=ACS\\_11\\_1YR\\_B03003&prodType=table](http://factfinder2.census.gov/faces/tableservices/jsf/pages/productview.xhtml?pid=ACS_11_1YR_B03003&prodType=table)
- U.S. Preventive Services Task Force (2002) Screening for breast cancer: recommendations and rationale. *Ann Intern Med* 137(5 Part 1):p. 344–6
- U.S. Preventive Services Task Force, Screening for breast cancer (2009) U.S. Preventive services task force recommendation statement. *Ann Intern Med* 151:p. 716–726
- Vahabi M (2003) Breast cancer screening methods: a review of the evidence. *Health Care Women Int* 24(9):773–93. doi:10.1080/07399330390229957

doi:10.1186/2193-1801-2-84

Cite this article as: Ramirez et al.: Time to definitive diagnosis of breast cancer in Latina and non-Hispanic white women: the six cities study. *SpringerPlus* 2013 **2**:84.

Submit your manuscript to a SpringerOpen® journal and benefit from:

- Convenient online submission
- Rigorous peer review
- Immediate publication on acceptance
- Open access: articles freely available online
- High visibility within the field
- Retaining the copyright to your article

Submit your next manuscript at ► [springeropen.com](http://springeropen.com)