

RESEARCH

Open Access

Mutational pressure dictates synonymous codon usage in freshwater unicellular α - cyanobacterial descendant *Paulinella chromatophora* and β - cyanobacterium *Synechococcus elongatus* PCC6301

Rahul Raveendran Nair¹, Manivasagam Bharatha Nandhini², Thilaga Sethuraman² and Ganesh Doss^{2*}

Abstract

Background: Comparative study of synonymous codon usage variations and factors influencing its diversification in α - cyanobacterial descendant *Paulinella chromatophora* and β - cyanobacterium *Synechococcus elongatus* PCC6301 has not been reported so far. In the present study, we investigated various factors associated with synonymous codon usage in the genomes of *P. chromatophora* and *S. elongatus* PCC6301 and findings were discussed.

Results: Mutational pressure was identified as the major force behind codon usage variation in both genomes. However, correspondence analysis revealed that intensity of mutational pressure was higher in *S. elongatus* than in *P. chromatophora*. Living habitats were also found to determine synonymous codon usage variations across the genomes of *P. chromatophora* and *S. elongatus*.

Conclusions: Whole genome sequencing of α -cyanobacteria in the cyanobium clade would certainly facilitate the understanding of synonymous codon usage patterns and factors contributing its diversification in presumed ancestors of photosynthetic endosymbionts of *P. chromatophora*.

Keywords: *Paulinella chromatophora*; *Synechococcus elongatus*; Synonymous codon usage; Mutational pressure; Chromatophore

Background

Nucleotide triplet codons, differing only at the third site or rarely at second site but encoding same amino acid are termed as synonymous codons (Ermolaeva 2001). Synonymous mutations do not alter amino acid sequences, but usage of synonymous codons is not at uniform frequencies both within and between organisms, resulting in species specific codon usage bias (Grantham et al. 1980; Sharp et al. 1995). Synonymous codon usage (SCU) bias favours the usage of specific subset of certain codons (preferred codons) within each amino acid family (Agashe et al. 2013). Weak selection of preferred codons has been

recognized as an important evolutionary force (Carlini et al. 2001) as SCU bias affects overall fitness of a cell by influencing the level of gene expression and various cellular processes such as RNA processing, translation of protein and protein folding (Parmley and Hurst 2007; Hershberg and Petrov 2008; Plotkin and Kudla 2011). Functional integrity of the genetic code is maintained by synonymous codons (Biro 2008). Population genetic studies reveal that evolution of biased codon usage is mainly either due to genome wide AT/GC biased mutational pressure or due to weak selection acting on specific subset of codons (preferred codons) (Bulmer 1991; Yang and Nielson 2008; Agashe et al. 2013). Other major factors include interaction between codons and anticodons (Kurland 1993), site-specific codon biases (Smith and Smith 1996), efficacy of replication (Deschavanne and Filipinski 1995), usage of codon

* Correspondence: ganeshdsneha@yahoo.co.in

²Department of Plant Biotechnology, School of Biotechnology, Madurai Kamaraj University, Palkalai Nagar, 625 021, Madurai, Tamil Nadu, India
Full list of author information is available at the end of the article

pairs (Irwin et al. 1995) and evolutionary time scale (Karlin et al. 1998).

Forces that influence evolution of SCU bias in various taxa has been extensively analyzed in various organisms (Ikemura 1982; Moriyama and Powell 1997; Nair et al. 2012; Seva et al. 2012; Sharp and Cowe 1991) as SCU bias has high significance in estimating evolutionary rates and phylogenetic reconstruction (Sarmer and Sullivan 1989; Wall and Herback 2003). Previous studies revealed that biased codon usage is stronger in highly expressed genes as selection pressure may be acting on those genes (Ikemura 1985). However, strength of selection appears to be varying among evolutionarily conserved amino acid residues that exhibit stronger bias. In contrast, evolutionarily variable residues often exhibit less or weaker bias (Akashi 1995; Drummond and Wilke 2008). Mutational pressure is another important factor, shaping SCU variations (Plotkin and Kudla 2011; Akashi 2001). Life style of prokaryotic organisms also play important role in SCU variations (Botzman and Margalit 2011). However, role of physiological processes in framing evolution of biased codon usage is yet to be unravelled (Agashe et al. 2013).

Endosymbiotic associations have significant impacts on cellular evolution and diversity (Bodyl et al. 2007). Extensive research on plastid genomes unravelled that a single primary endosymbiotic event in which a cyanobacteria was acquired by a unicellular eukaryote led to the evolution of plastids (Nowack et al. 2008). In endosymbiosis research, *Paulinella chromatophora*, a filose thecamoeba has been regarded as an outstanding model for primary plastid origin as *P. chromatophora* is the only known case of independent primary cyanobacterial acquisition (Chan et al. 2011; Marin et al. 2005; Yoon et al. 2006). Sequencing of chromatophore genome revealed the acquisition of photosynthesis by eukaryotes (Nowack et al. 2008). Chromatophores of *P. chromatophora* are monophyletic with α - cyanobacteria (Cyanobium clade) (Marin et al. 2007) unlike plastids that were evolved from β - cyanobacterial ancestor (Nowack et al. 2008).

SCU bias in various primary endosymbionts and plastid genomes were extensively studied (Nair et al. 2012; Morton 1993, 1997, 1998; Sablok et al. 2011). Various factors that frame SCU variations in phylogenetically close marine *Prochlorococcus* and *Synechococcus* clades in the PS clade (*Prochlorococcus/Synechococcus*) (Marin et al. 2007) were studied and found that SCU pattern of *Prochlorococcus* was shaped by mutational pressure and nucleotide compositional constraints whereas in marine *Synechococcus*, translational selection determine the SCU pattern (Yu et al. 2012). However, no complete cyanobacterial genome has been reported from the Cyanobium clade (third major lineage of PS clade) so far (Figure 1). Hence, comparison of factors that frame SCU in chromatophore

genome and its presumed ancestor could not be done. Since habitat of microorganisms play crucial role in SCU variation across genes (Botzman and Margalit 2011), unicellular freshwater β - cyanobacterium *Synechococcus elongatus* PCC6301 (SELONG clade) (Marin et al. 2007) was selected for comparing the SCU patterns and also to elicit the factors determining the SCU variations in evolutionarily young (*P. chromatophora*) and evolutionarily old (*S. elongatus*) genomes.

Results

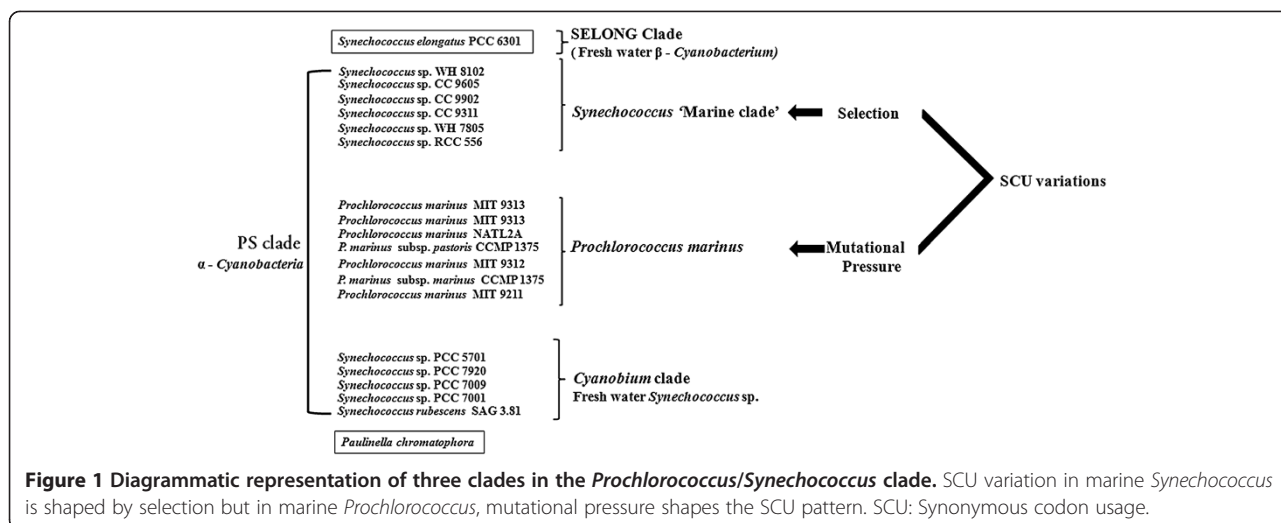
I. Compositional properties

a) *Chromatophore genome of P. chromatophora*

Comparison of total A, T, G, C contents in the genome of *P. Chromatophora* revealed higher content of A and T than G and C. Analysis of A_3 , T_3 , G_3 , C_3 contents revealed that T_3 content was highest and C_3 , the lowest of all with mean and S.D of 39.14% and 4.06% for T_3 and 12.94% and 3.67% for C_3 . GC_3 ranged from 16.15% to 54.38% with a mean and S.D of 27.40% and 4.69% respectively. Correlation analysis between total nucleotide contents and silent base contents revealed the stronger negative correlations between A_3 and GC (Table 1). Similarly, high negative correlation was found between A and GC_3 (Table 1). This suggests that A and GC contents play important role in SCU bias in the chromatophore genome. High positive correlation between C and G_3 also might have profound effect in framing SCU patterns. However, no correlations were found between G and T_3 , and also for T and G_3 , suggesting no influence of individual T and G contents in codon usage bias. Since A_3 content was in strong negative correlation with all total nucleotide contents (Table 1), it can be inferred that A_3 content play an important role in shaping SCU patterns across 786 PCG in the chromatophore genome.

b) *Genome of S. elongatus*

Contrary to the observations with *P. chromatophora*, G and C contents were higher than A and T contents in the genome of *S. elongatus*. G_3 and C_3 contents were significantly higher than A_3 and T_3 contents. Among the silent base contents, C_3 was highest and A_3 , the lowest of all with mean and S.D of 31.12% and 6.02% for C_3 , and 16.43% and 4.12% for A_3 . GC_3 varied from 26.12% to 76.90% with a mean and S.D of 60.19% and 7.45% respectively. Correlation analysis between total A, T, G, C contents and A_3 , T_3 , G_3 , C_3 contents revealed that A_3 was negatively correlated to G, C and GC. Similarly, T_3 was in high negative correlation with G, C, GC_3 . GC composition at silent site was found negatively correlated with both A and T contents (Table 2). Hence, all silent base contents viz., A_3 , T_3 , G_3 and C_3 might be influencing SCU variations of protein coding genes (PCG) of *S. elongatus*.



II. Characteristics of relative synonymous codon usage

a) Chromatophore genome of *P. chromatophora*

Overall codon usage patterns of 786 PCG in the chromatophore genome of *P. chromatophora* were analyzed (Table 3). All the amino acids were found to use A and T ending codons most frequently (codons with RSCU value greater than one) as chromatophore genome is rich in AT than GC. All C ending codons except AGC codes for Ser and CGC codes for Arg and all G ending codons except TTG for Leu were found rare (RSCU values less than 0.66). CTA codes for Leu was the only intermediate codon (RSCU value falls between 0.66 and 1) among the A ending codons. Among the 786 PCG in the chromatophore genome of *P. chromatophora*, ENC values ranged from 33.43 to 61 with a mean and S.D of 47.57 and 3.77 respectively, indicating considerable variation in codon usage among the genes of this organism. GC₃ values ranged from 16.2% to 54.40% with mean and S.D of 27.40% and 4.69% respectively. Chi-square analysis of codon count revealed that 5% of the genes were placed on either side of axis 1, revealing 16 codons were statistically over represented (putative optimal codons) in genes located on the extreme left of the axis 1. Among these

codons, ten A ending codons and six T ending codons were found to represent 62.5% A ending codons and 37.5% T ending codons. It is interesting to note that most of the over represented T ending codons were found in 2 codon families except for Glu in which CAA was over represented statistically. These result suggested that some other factors apart from compositional constraints might be influencing the codon usage in this organism.

b) Genome of *S. elongatus*

Overall codon usage patterns of 2342 PCG in the genome of *S. elongatus* were analyzed (Table 4). All amino acids except two fold degenerate Phe, Glu, Asp and Lys used G or C ending codons most frequently whereas Phe used TTT, Glu used GAA, Asp used GAT and Lys used AAA most often. Rare codons were TTA, CTT and CTA for Leu, ATA for Ile, GTA for Val, ACA for Thr and GGA for Gly. Intermediate codons were found to be A or T ending predominantly except ACG for Thr, AAG for Lys, GAC for Asp, GAG for Glu, AGG for Arg and GGG for Gly. Among the 14 statistically over represented codons of genes in the extreme left of the axis 1,

Table 1 Spearman's rank correlation analysis of nucleotide contents in *P. chromatophora*

	A ₃	T ₃	G ₃	C ₃	GC ₃
A	0.579**	-0.252**	-0.263**	-0.277**	-0.373**
T	-0.158**	0.377**	-0.062	-0.210**	-0.204**
G	-0.314**	-0.003	0.358**	0.166**	0.349**
C	-0.357**	-0.119**	0.587**	0.117**	0.502**
GC	-0.413**	-0.082*	0.323**	0.441**	0.536**

Correlation analysis between total nucleotide contents and silent base contents of 786 PCG in the chromatophore genome of *P. chromatophora*.

*Significant at $p \leq 0.01$ (one tailed).

**Significant at $p \leq 0.001$ (one tailed).

Table 2 Spearman's rank correlation analysis of nucleotide contents in *S. elongatus*

	A ₃	T ₃	G ₃	C ₃	GC ₃
A	0.522**	0.145**	-0.484**	-0.102**	-0.392**
T	0.002	0.618**	-0.151**	-0.364**	-0.382**
G	-0.303**	-0.339**	0.671**	0.063*	0.382**
C	-0.294**	-0.454**	0.035*	0.559**	0.460**
GC	-0.376**	-0.534**	0.482**	0.288**	0.572**

Correlation analysis between total nucleotide contents and silent base contents of 2342 PCG in the *Synechococcus elongatus* PCC 6301.

*Significant at $p \leq 0.01$ (one tailed).

**Significant at $p \leq 0.001$ (one tailed).

Table 3 Overall codon usage in *P. chromatophora*

AA	Codon	N (RSCU)	AA	Codon	N (RSCU)
Phe	TTT	6873(1.44)	Tyr	TAT	4818(1.45)
	TTC	2665(0.56)		TAC	1810(0.54)
Leu	TTA	10679(2.06)	TER	TAA	439(1.67)
	TTG	84586(0.88)		TAG	144(0.55)
	CTT	6933(1.33)	His	CAT	4076(1.54)
	CTC	2001(0.39)		CAC	1209(0.45)
	CTA	5010(0.96)	Gln	CAA	7465(1.42)
	CTG	1961(0.38)		CAG	2993(0.57)
Ile	ATC	3060(0.46)	Asn	AAT	8988(1.56)
	ATT	9871(1.48)		AAC	2507(0.43)
	ATA	6960(1.05)	Lys	AAA	8697(1.42)
Met	ATG	5377(1.00)		AAG	3498(0.57)
	Val	GTT	5473(1.33)	Asp	GAT
GTC		2078(0.50)	GAC		2379(0.39)
GTA		6876(1.68)	Glu	GAA	11405(1.46)
GTG		1941(0.47)		GAG	4189(0.53)
Ser	TCT	4800(1.55)	Cys	TGT	2292(1.42)
	TCC	1460(0.47)		TGC	922(0.57)
	TCA	3346(1.08)	TER	TGA	203(0.77)
	TCG	912(0.34)		Trp	TGG
Pro	CCT	5240(1.80)	Arg	CGT	5325(2.08)
	CCC	1350(0.46)		CGC	1765(0.69)
	CCA	4110(1.41)	CGG	CGA	2696(1.01)
	CCG	916(0.31)		CGG	892(0.35)
	Thr	ACT		5928(1.79)	Ser
ACC		1789(0.54)	AGC	2262(0.73)	
ACA		4202(1.27)	Arg	AGA	3524(1.38)
ACG		1300(0.39)		AGG	1169(0.46)
Ala	GCT	9187(1.85)	Gly	GGT	7794(1.64)
	GCC	2787(0.56)		GGC	2836(0.59)
	GCA	6221(1.25)		GGA	6200(1.30)
	GCG	1670(0.33)		GGG	2129(0.44)

Overall codon usage of 768 PCG in the chromatophore genome of *P. chromatophora*.
 Data represented with bold letters are preferred codons.

Table 4 Overall codon usage in *S. elongatus*

AA	Codon	N (RSCU)	AA	Codon	N (RSCU)
Phe	TTT	14909(1.11)	Tyr	TAT	8278(0.87)
	TTC	11811(0.88)		TAC	10678(1.12)
Leu	TTA	6634(0.50)	TER	TAA	776(0.96)
	TTG	19535(1.49)		TAG	922(1.15)
	CTT	7121(0.41)	His	CAT	6464(0.96)
	CTC	20585(1.19)		CAC	6949(1.03)
	CTA	8678(0.50)	Gln	CAA	23338(0.98)
	CTG	32548(1.88)		CAG	24092(1.01)
Ile	ATC	21038(1.50)	Asn	AAT	10381(0.97)
	ATT	20131(1.44)		AAC	10858(1.02)
	ATA	692 (0.05)	Lys	AAA	10248(1.04)
Met	ATG	11456(1.00)	AAG	9370(0.95)	
	Val	GTT	12236(0.94)	Asp	GAT
GTC		17788(1.37)	GAC		13769(0.69)
GTA		3535(0.27)	Glu	GAA	24927(1.13)
GTG		18179(1.40)		GAG	18827(0.86)
Ser	TCT	4946(0.81)	Cys	TGT	3451(0.82)
	TCC	5912(0.97)		TGC	4905(1.17)
	TCA	4257(0.70)	TER	TGA	707(0.882)
	TCG	9207(1.51)		Trp	TGG
Pro	CCT	7920(0.74)	Arg	CGT	7985(0.62)
	CCC	14372(1.35)		CGC	23748(1.87)
	CCA	7251(0.68)	CGG	CGA	7940(0.62)
	CCG	13017(1.22)		CGG	11080(0.87)
	Thr	ACT		7789(0.77)	Ser
ACC		15479(1.54)	AGC	13096(1.17)	
ACA		5513(0.55)	Arg	AGA	1135(1.17)
ACG		11432(0.77)		AGG	791(0.82)
Ala	GCT	19671(0.96)	Gly	GGT	14414(1.02)
	GCC	25932(1.27)		GGC	24840(1.77)
	GCA	14455(0.70)		GGA	6797(0.48)
	GCG	21572(1.05)		GGG	9975(0.71)

Overall codon usage of 2342 PCG in the cyanobacterial genome of *S. elongatus*.
 Data represented in bold letters are preferred codons.

eight C (56.8 %) ending codons and six G (44.2 %) ending codons were present (Table 5). For 2342 PCG in *S. elongatus* genome, ENC values varied from 39.80 to 56.65 with a mean and S.D of 51.29 and 2.14 respectively indicating marked variation in the codon usage of genes in the genome of *S. elongatus*. GC₃ varied from 26.12% to 76.90% with a mean and S.D of 60.19% and 7.45% respectively, suggesting the major influence of GC compositional constraints in framing codon usage across genes in this genome.

II. Influence of GC composition on SCUO

a) Chromatophore genome of *P. chromatophora*

Overall GC content and local GC compositions (GC₁, GC₂, and GC₃) of 786 PCG were estimated and plotted against corresponding SCUO (Figure 2). GC₃ showed two horns (Figure 2d) whereas overall GC and other local GC compositions (GC₁ and GC₂) did not show any horns. The relationship between GC₃ and SCUO was found to be linear (SCUO = -0.004 (GC₃) + 0.324, r = -0.325, p < 0.001). It was also observed that GC₂ content was significantly correlated with SCUO values (r = -0.114, p <

Table 5 Putative optimal codons

<i>Paulinella chromatophora</i>					<i>Synechococcus elongatus</i>					
AA	Codon		AA	Codon	AA	Codon	AA	Codon		
Phe	TTT	**	Tyr	TAT	**	Phe	TTT	Tyr	TAT	
	TTC			TAC		TTC	**	TAC	**	
Leu	TTA	**	TER ^a	TAA		Leu	TTA	TER ^a	TAA	
	TTG			TAG		TTG		TAG		
	CTT		His	CAT	**	CTT		His	CAT	
	CTC			CAC		CTC		CAC	**	
	CTA		Gln	CAA	**	CTA		Gln	CAA	
	CTG			CAG		CTG	**	CAG		
Ile	ATC		Asn	AAT	**	Ile	ATC	Asn	AAT	
	ATT			AAC		ATT		AAC		
	ATA	**	Lys	AAA	**	ATA		Lys	AAA	
Met	ATG			AAG		Met	ATG	AAG		
Val	GTT		Asp	GAT	**	Val	GTT	Asp	GAT	
	GTC			GAC		GTC		GAC	**	
	GTA		Glu	GAA	**	GTA		Glu	GAA	
	GTG			GAG		GTG	**	GAG		
Ser	TCT		Cys	TGT	**	Ser	TCT	Cys	TGT	
	TCC			TGC		TCC		TGC	**	
	TCA	**	TER	TGA		TCA		TER	TGA	
	TCG		Trp	TGG		TCG	**	Trp	TGG	
Pro	CCT		Arg	CGT		Pro	CCT	Arg	CGT	
	CCC			CGC		CCC		CGC	**	
	CCA	**		CGA		CCA		CGA		
	CCG			CGG		CCG	**	CGG		
Thr	ACT		Ser	AGT		Thr	ACT	Ser	AGT	
	ACC			AGC		ACC		AGC		
	ACA	**	Arg	AGA		ACA		Arg	AGA	
	ACG			AGG		ACG	**	AGG		
Ala	GCT		Gly	GGT		Ala	GCT	Gly	GGT	
	GCC			GGC		GCC	**	GGC	**	
	GCA	**		GGA	**	GCA		GGA		
	GCG			GGG		GCG		GGG		

Putative optimal codons in *P. chromatophora* and *S. elongatus*.

**Putative optimal codons.

^aCanonical stop codons excluded from the analysis.

Figures are significant at $p \leq 0.001$ (one tailed).

0.001). These results suggested that GC_3 was more important than GC , GC_1 , GC_2 in shaping SCU bias. Thus, mutational bias has important role in SCU variation in chromatophore genome of *P. chromatophora*.

b) Genome of *S. elongatus*

In the genome of *S. elongatus*, total GC content and GC compositions at three codon positions (GC_1 , GC_2 , and GC_3) were calculated and plotted against corresponding

SCUO (Figure 3). GC and GC_3 showed two horns (Figures 3a and d). SCUO was positively correlated with GC ($r = 0.063$, $p < 0.01$) and with GC_3 ($r = 0.308$, $p < 0.001$), but negatively correlated with GC_1 ($r = -0.113$, $p < 0.001$) and with GC_2 (-0.08 , $p < 0.001$), indicating the profound influence of GC_1 and GC_2 in SCU variations. In *S. elongatus* genome, relationship between SCUO and GC_3 was found to be linear ($SCUO = 0.001(GC_3) + 0.052$, $r = 0.308$, $p < 0.001$). It could be possible that GC_3 has

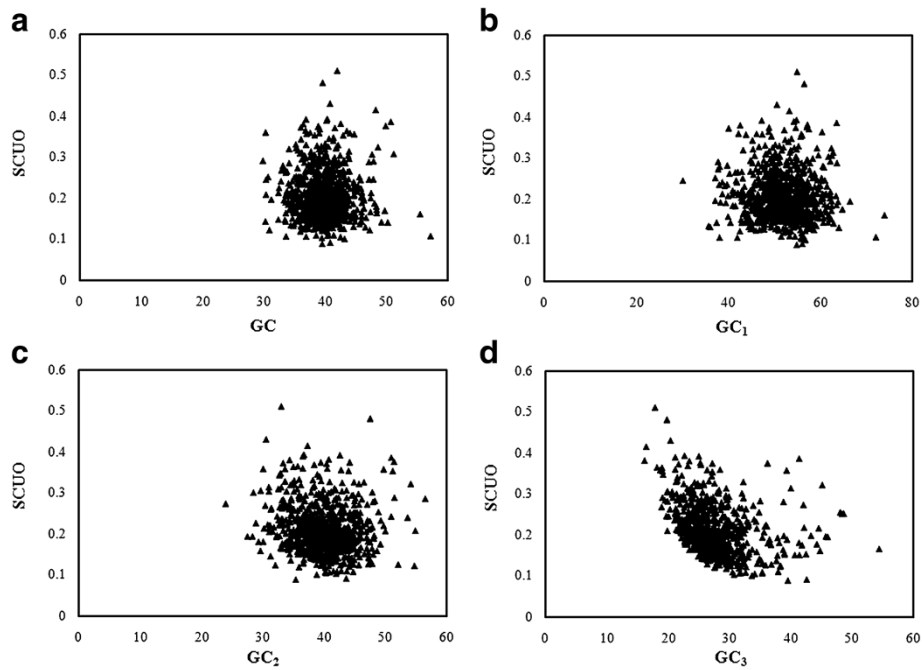


Figure 2 Relationship between SCUO and GC composition in *P. chromatophora*. (a) Relationship between SCUO and the overall GC composition, (b) Relationship between SCUO and GC₁, (c) Relationship between SCUO and GC₂, (d) Relationship between SCUO and GC₃. SCUO: Synonymous codon usage order.

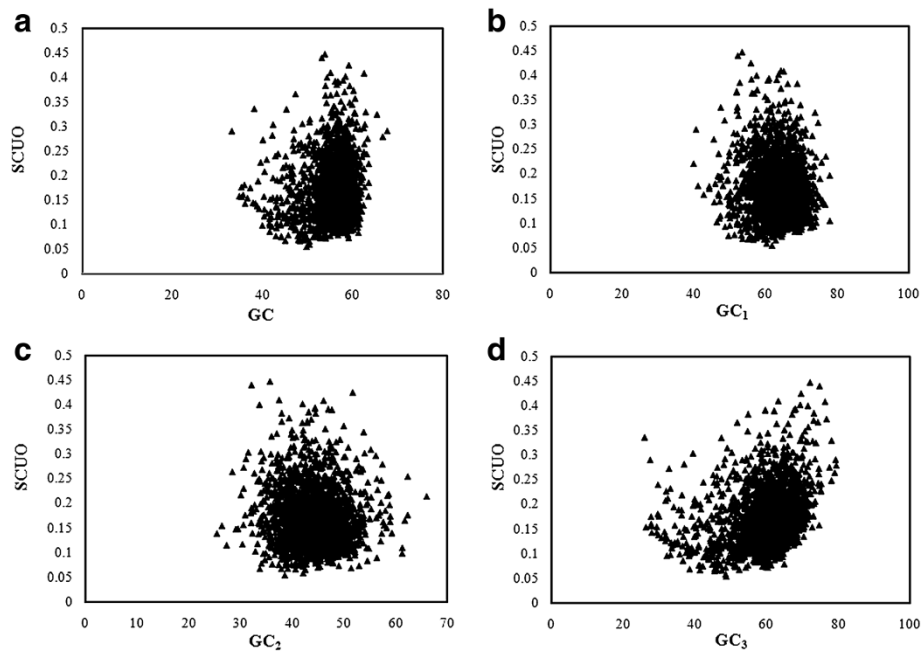


Figure 3 Relationship between SCUO and GC composition in *S. elongatus*. (a) Relationship between SCUO and the overall GC composition, (b) Relationship between SCUO and GC₁, (c) Relationship between SCUO and GC₂, (d) Relationship between SCUO and GC₃.

more influence in SCU variation than other local GC compositions as GC_3 exhibited the highest correlation with SCUO. Hence, GC mutational pressure may be the key factor that shapes the SCU variation in *S. elongatus* genome.

IV. ENC Vs GC_3 plot

a) Chromatophore genome of *P. chromatophora*

ENC Vs GC_3 plots are generally used for analyzing SCU patterns across genes as axes of this plot are independent of the data and displays intraspecific and interspecific SCU patterns (Wright 1990). If a particular gene is under GC_3 compositional constraints, it lie on or just below the expected GC_3 curve. If the SCU pattern of a gene is influenced by translational selection, then it lie considerably below the GC_3 curve (Wright 1990). ENC values of 786 PCG were plotted against corresponding GC_3 values (Figure 4a) and majority of the genes were clustered on the left side of the curve. Though some genes lie on or just below the expected GC_3 curve, most of the genes were clustered below the curve. This indicated the influence of certain forces other than GC_3 compositional constraints in shaping SCU patterns in chromatophore genome of *P. chromatophora*. Significant correlation observed between GC_{12} and GC_3 ($r = 0.207$, $p < 0.001$) in neutrality plot (Figure 5a) has nullified the influence of selection in framing the codon usage pattern of chromatophore genes. Further, influence of GC_3 mutational pressure on PCG was analyzed using PR2 bias plot (Figure 6a) and observed that synonymous A, T and G, C contents were used proportionally ($y = 0.182x + 0.362$, $r = 0.236$), confirming the role of GC_3 biased mutational pressure in shaping the SCU across 786 PCG in the chromatophore genome of *P. chromatophora*.

b) Genome of *S. elongatus*

Majority of the genes were grouped considerably below the expected GC_3 curve (Figure 4b), indicating the influence of some other forces other than GC compositional

constraints. In neutrality plot (Figure 5b), GC_{12} was significantly correlated with GC_3 , indicating that selection has only weak role in SCU variation. The influence of GC_3 on SCU variation was analyzed by PR2 bias plot (Figure 6b) and revealed that A, T and G, C contents were used proportionally ($y = 0.127 + 0.350$, $r = 0.140$), reflecting the GC_3 compositional constraints in SCU variation across 2342 PCG in the *S. elongatus* genome.

V. Correspondence analysis (COA)

a) Chromatophore genome of *P. chromatophora*

Axis 1, axis 2, axis 3, axis 4 and axis 5 accounted for 7.31%, 5.15%, 4.43%, 4.32% and 3.89% of total variations respectively (Figure 7). No single major explanatory axis was identified for explaining the variations. Spearman's rank correlation analysis between five axes of COA and various indices of codon usage revealed that all axes except axis 3 and 5 were in significant correlation with silent base contents (Table 6). For instance, axis 1 with A_3 , G_3 , C_3 , axis 2 with A_3 , T_3 , and axis 4 with A_3 , T_3 , C_3 , GC_3 . Strong negative correlation existed between axes 1 and 2 with A_3 , and axis 4 with T_3 suggested the influence of compositional constraints in shaping codon usage of chromatophore genes. Complex correlations were observed among 59 synonymous codons and five axes of COA. Interestingly, Cys codons (TGT and TGC) were found to have the highest correlation with axis 2 (Table 7). Thus, Cys codons may have high influence in separating PCG along axis 2. Axes 1 and 4 shown significant negative correlation with ENC and CAI. Hence, it could be assumed that genes, distributed along axes 1 and 4 might be influenced by some amount of selection. Length of CDS was found to be in correlation only with axis 1. Since axis 1 did not account for much of the variations, length of CDS could not be considered as an important factor that frames SCU across genes. Aromaticity and protein gravy scores were not correlated with any one of the axes, indicating no influence in shaping codon usage patterns of chromatophore genes in the *P. chromatophora*.

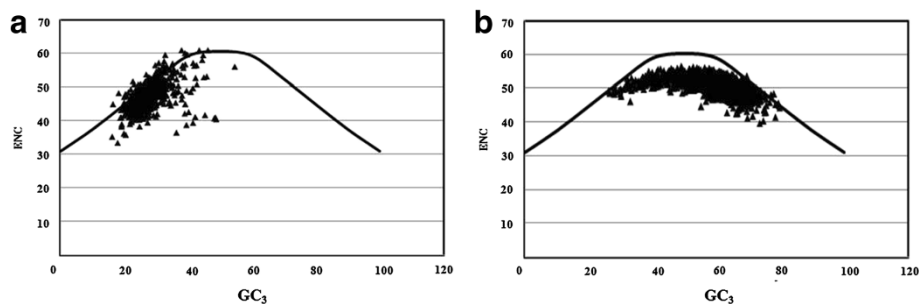
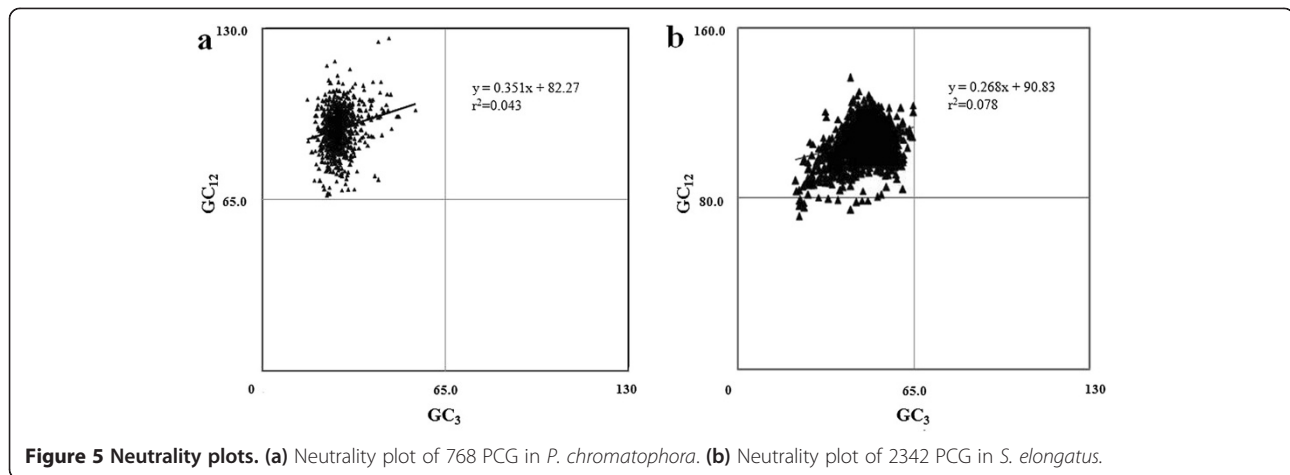


Figure 4 ENC Vs GC_3 plots. (a) ENC Vs GC_3 plot of 768 PCG in *P. chromatophora*. (b) ENC vs GC_3 plot of 2342 PCG in *S. elongatus* genome. ENC: Effective number of codons.



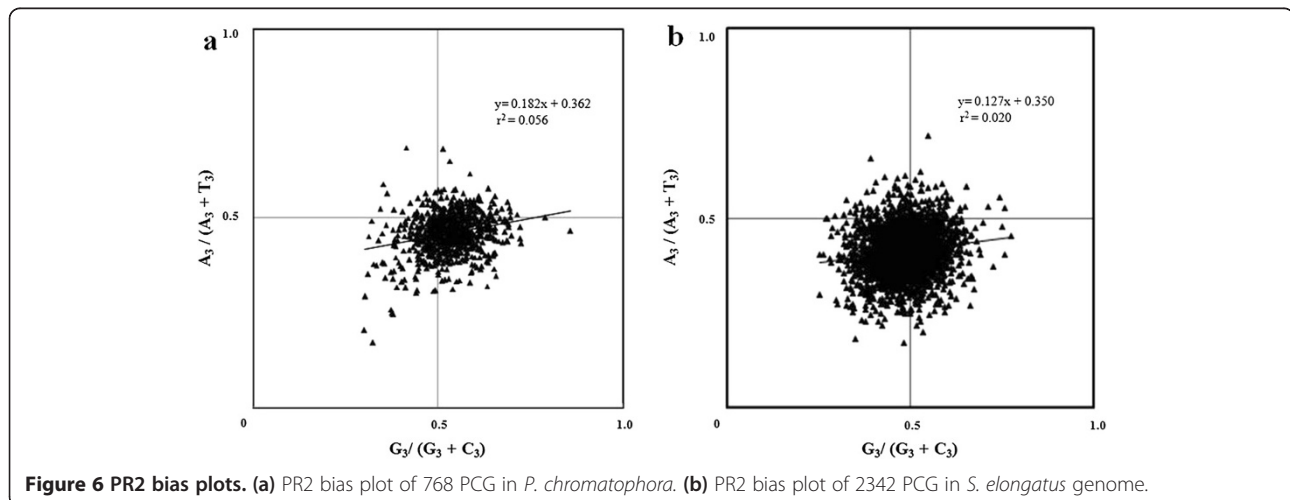
b) Genome of *S. elongatus*

Axis 1, axis 2, axis 3, axis 4 and axis 5 accounted for 12.22%, 7.93%, 5.24%, 4.80% and 4.30% of total variations respectively (Figure 8). None of the axes was found to contribute majority of variation. All PCG were found to be separated into three clusters along axis 2. All C ending codons were found to have strong negative correlation with axis 2. Clusters were formed based on the RSCU value of each C ending codons. Correlation analysis was performed between various axes of COA and codon usage indices (Table 8). However, axes 1, 2, 3, and 4 were in significant negative correlation with GC_3 . Interestingly, axes 1, 2 and 3 were negatively correlated with length of CDS. Thus GC_3 compositional constraints and length of CDS might be influencing the SCU patterns across genes in the *S. elongatus* genome. Among the silent base contents and various axes of COA, positive correlation existed between axis 1 with A_3 and T_3 , axis 2 with A_3 , T_3 , and G_3 , axis 3 with A_3 and T_3 , axis 4 with A_3 , T_3 and C_3 and axis 5 with A_3 . This suggested the influence of nucleotide compositional constraints in

SCU variation in *S. elongatus* genome. ENC was positively correlated with axes 1, 2, and 3 whereas CAI was in positive correlation with axis 1, but negatively correlated with axis 3. Thus, weak selection might influence the SCU of genes in *S. elongatus*. Axes 2 and 3 were positively correlated with protein gravy score, but axis 4 was negatively correlated, indicating the possible influence of hydrophobic character of protein in SCU variation across genes in *S. elongatus* genome.

Discussion

Chromatophore genome of *P. chromatophora* has typical cyanobacterial characteristics (Yoon et al. 2006) as *P. chromatophora* was diverged as sister to free living α -cyanobacteria (Marin et al. 2007). It was proposed that photosynthetic endosymbionts of *P. chromatophora* were evolved from cyanobium clade (Marin et al. 2007) which is paradoxical to the previous finding that chromatophores were evolved from the marine clade, consisting *Prochlorococcus* and *Synechococcus* (Marin et al. 2005). However, no complete cyanobacterial genome was



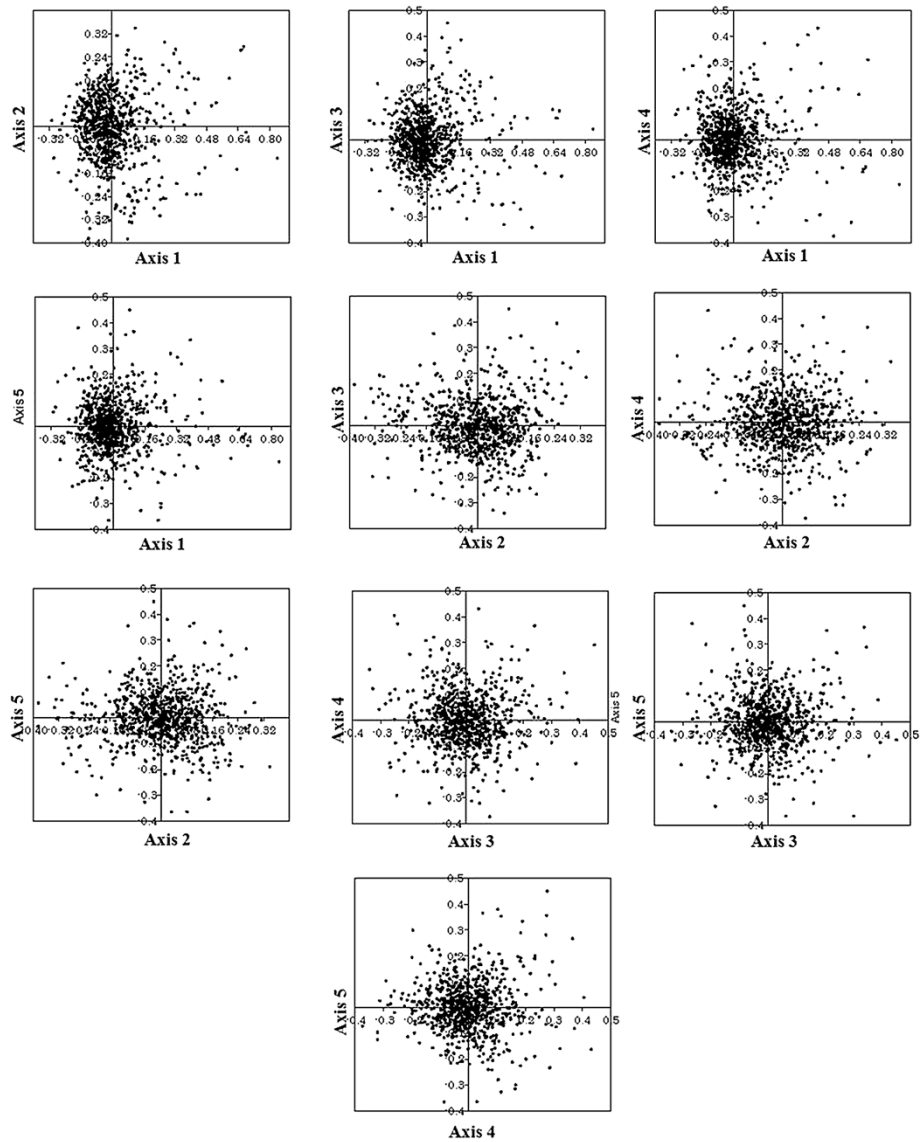


Figure 7 Correspondence analysis. Correspondence analysis on RSCU values of 768 PCG in the chromatophore genome of *P. chromatophora*.

Table 6 Spearman's rank correlation analysis between COA axes and codon usage indices

Axes	A ₃	T ₃	G ₃	C ₃	GC ₃	ENC	CAI	Gravy score	Aromaticity	Length of CDS
Axis 1	-0.434**	-0.094	0.221**	0.559**	0.565**	0.345**	-0.360**	-0.064	-0.081	-0.140**
Axis 2	-0.159**	0.118**	0.092	-0.014	0.041	-0.072	0.104	-0.045	-0.028	0.006
Axis 3	0.008	0.016	0.057	-0.057	-0.015	0.044	0.063	-0.023	-0.024	0.065
Axis 4	0.173**	-0.404**	0.125	0.167**	0.187**	0.343**	-0.258**	0.043	-0.028	-0.074
Axis 5	-0.027	0.060	-0.031	-0.006	-0.035	-0.031	-0.022	-0.075	-0.030	-0.096

Correlation analysis between five different axes of COA and various codon usage indices of 786 PCG in the chromatophore genome of *P. chromatophora*.

Analysis was made using Spearman's rank correlation method.

**Significant at $p \leq 0.001$ (one tailed).

Table 7 Correlation analysis between COA axes and synonymous codons

Codons	<i>P. chromatophora</i>					<i>S. elongates</i>				
	Axis 1	Axis 2	Axis 3	Axis 4	Axis 5	Axis 1	Axis 2	Axis 3	Axis 4	Axis 5
GCT	0.017	0.093*	-0.021	0.077	0.025	0.213**	-0.094*	0.013	0.249**	-0.064
GCG	0.027	0.019	-0.041	-0.046	0.057	-0.161**	0.111**	0.019	-0.334**	0.136**
GCC	0.156**	0.017	-0.121**	-0.029	0.007	-0.290**	-0.040	-0.072	-0.019	-0.031
GCA	-0.133**	-0.106**	0.130**	0.110**	-0.057	0.279**	0.022	0.054	0.085	-0.067
TGT	-0.416**	0.723**	-0.116**	0.051	-0.090*	0.292**	0.190**	0.188**	-0.477**	-0.619**
TGC	0.291**	-0.792**	0.192**	-0.049	-0.003	-0.239**	-0.089**	-0.247**	0.371**	0.686**
GAT	-0.286**	-0.064	0.035	-0.099**	0.058	0.257**	0.189**	0.158**	-0.215**	0.128**
GAC	0.290**	0.058	-0.032	0.093**	-0.051	-0.256**	-0.188**	-0.166**	0.218**	-0.129**
GAG	0.231**	0.015	0.097**	-0.079	-0.061	0.044	0.113**	-0.036	-0.110**	0.037
GAA	-0.238**	-0.022	-0.091*	0.072	0.054	-0.037	-0.116**	0.040	0.106**	-0.028
TTT	-0.266**	-0.087*	0.088*	-0.070	0.083	0.339**	0.195**	0.209**	-0.178**	0.099**
TTC	0.248**	0.082	-0.086*	0.060	-0.083	-0.348**	-0.194**	-0.211**	0.171**	-0.099**
GGT	0.129**	0.083	0.079	-0.030**	-0.028	0.012	-0.128**	-0.005	0.177**	-0.098**
GGG	0.034	-0.122**	0.011	0.096**	-0.021	0.161**	0.201**	0.041	-0.271**	0.110**
GGC	0.220**	0.014	-0.088*	0.050	0.021	-0.403**	-0.137**	-0.097*	0.080	-0.047
GGA	-0.342**	-0.031	-0.023	0.159**	-0.004	0.396**	0.196**	0.109**	-0.102**	0.098**
CAC	0.213**	0.178**	0.600**	0.170**	0.260**	-0.368**	-0.159**	-0.224**	0.051	-0.196**
CAT	-0.278**	-0.213**	-0.530**	-0.152**	-0.299**	0.360**	0.178**	0.187**	-0.107**	0.246**
ATT	-0.050	-0.008	0.015	-0.141**	0.121**	0.267**	0.019	0.138**	-0.057	0.076
ATA	-0.217**	0.037	-0.045	0.251**	-0.095**	0.323**	0.022	-0.039	0.071	0.030
ATC	0.299**	-0.034	0.020	-0.118**	-0.015	-0.341**	-0.022	-0.134**	0.029	-0.085
AAA	-0.219**	-0.207**	0.025	0.068	0.075	0.038	-0.040	0.050	0.176**	-0.061
AAG	0.217**	0.188**	-0.022	-0.077	-0.079	-0.068	0.001	-0.072	-0.167**	0.050
CTA	-0.091*	-0.171**	0.029	0.189**	-0.127**	0.345**	0.102**	0.038	0.026	0.034
CTC	0.125**	0.011	-0.074	0.087*	0.052	-0.079	-0.108**	-0.022	0.088	-0.022
CTG	0.185**	0.008	0.064	0.076	-0.051	-0.403**	0.003	-0.032	-0.218**	0.038
CTT	-0.151**	0.119**	0.004	-0.268**	0.059	0.374**	0.061	0.032	0.153**	-0.060
TTA	-0.190**	-0.041	0.012	-0.036	-0.055	0.481**	0.156**	0.056	-0.008	0.073
TTG	0.144**	0.029	0.006	0.053	0.055	-0.468**	-0.142**	-0.048	0.001	-0.071
AAC	0.291**	0.036	0.117**	0.055	-0.045	-0.383**	-0.257**	-0.189**	0.188**	-0.167**
AAT	-0.291**	-0.029	-0.115**	-0.068	0.045	0.382**	0.240**	0.163**	-0.180**	0.165**
CCA	-0.248**	-0.171**	0.215**	0.113**	-0.369**	0.387**	0.159**	0.080	-0.029	0.094*
CCC	0.252**	0.031	0.009	0.306**	0.379**	-0.247**	-0.114**	-0.113**	0.017	-0.006
CCT	0.053	0.142**	-0.315**	-0.321**	0.075	0.304**	0.038	0.085	0.206**	-0.110**
CCG	0.003	-0.031	0.259**	-0.007	-0.011	-0.341**	-0.009	-0.057	-0.231**	0.051
CAA	-0.255**	-0.123**	-0.041	0.075	0.075	0.085	-0.116**	0.038	0.210**	-0.040
CAG	0.255**	0.123**	-0.041	-0.075	-0.075	-0.085	0.116**	-0.038	-0.210**	0.040
AGA	-0.049	-0.261**	-0.216**	-0.332**	0.502**	0.552**	-0.452**	-0.606**	-0.173**	-0.022
AGG	-0.100**	0.221**	0.244**	0.349**	-0.489**	0.261**	0.670**	-0.471**	0.037	-0.062
CGA	-0.357**	-0.197**	-0.140**	0.433**	0.246**	0.448**	0.174**	0.042	-0.176**	0.152**
CGC	0.373**	0.066	-0.413**	0.178**	-0.185**	-0.330**	-0.031	-0.018	-0.009	0.030
CGG	-0.046	0.048	0.138**	0.091	0.039	-0.067	0.029	-0.019	-0.193**	-0.002
CGT	0.048	0.107**	0.395**	-0.599**	-0.107**	0.062	-0.114**	-0.027	0.305**	-0.156**

Table 7 Correlation analysis between COA axes and synonymous codons (Continued)

AGC	0.248**	-0.005	-0.027	0.064	-0.174**	-0.331**	-0.237**	-0.161**	0.200**	-0.129**
AGT	-0.263**	-0.002	0.028	-0.053	0.182**	0.338**	0.242**	0.160**	-0.206**	0.126**
TCA	-0.275	-0.248	0.127	0.132	-0.178	0.365**	0.086	0.092	0.050	0.267**
TCC	0.145**	0.020	-0.143**	0.212**	-0.096**	-0.225**	-0.109**	-0.170**	0.016	-0.203**
TCG	-0.048	0.114**	-0.141**	0.020	0.048	-0.353**	0.067	-0.045	-0.450**	0.187**
TCT	0.128**	0.169**	0.068	-0.311**	0.191**	0.341**	-0.015	0.081	0.411**	-0.261**
ACC	0.299**	-0.053	-0.090*	-0.590**	-0.276**	-0.438**	-0.185**	-0.088	0.166**	-0.077
ACA	-0.325**	-0.057	0.185**	0.083	0.002	0.403**	0.178**	0.020	-0.010	-0.004
ACG	-0.057	-0.080	-0.048	0.119**	0.254**	-0.189**	0.061	0.011	-0.297**	0.151**
ACT	0.137**	0.148**	-0.090*	-0.139**	0.018	0.366**	0.014	0.054	0.087	-0.057
GTT	0.039	-0.073	0.071	-0.176**	0.003	0.361**	-0.020	0.061	0.190**	-0.029
GTG	0.164**	0.047	-0.019	0.154**	-0.040	-0.239**	0.098	0.025	-0.268**	0.055
GTC	0.027	0.074	-0.130**	0.145**	0.143**	-0.241**	-0.119**	-0.102**	0.112**	-0.026
GTA	-0.166**	-0.050	0.045	-0.044	-0.100**	0.226**	0.070	0.005	-0.072	-0.025
TAC	0.273**	0.002	-0.015	0.162**	-0.246**	-0.443**	-0.215**	-0.178**	0.223**	-0.113**
TAT	-0.277	-0.017	-0.012	-0.184	0.223	0.423**	0.217**	0.159**	-0.242**	0.114**

Correlation analysis between five different axes of COA and 59 synonymous codons in chromatophore genome and *S. elongatus* genome. Analysis was made using Spearman's rank correlation method.

*Figures are significant at $p \leq 0.01$ (one tailed). **Figures are significant at $p \leq 0.001$ (one tailed).

reported so far from freshwater α -cyanobacteria in the cyanobium clade to compare various factors that shape SCU variation in photosynthetic endosymbionts (chromatophores) of *P. chromatophora* and its presumed ancestor genome. In this context, SCU patterns and factors contributing diversification in the genomes of chromatophore and freshwater unicellular β – cyanobacterium *S. elongatus* (SELONG clade) (Marin et al. 2007) were studied. The present findings revealed that mutational pressure due to GC compositional constraints frame the SCU patterns in both genomes but with varying intensity. Factors influencing SCU variation in marine *Prochlorococcus* and *Synechococcus* (Yu et al. 2012) from the PS clade (Marin et al. 2007) revealed that mutational pressure plays important role in SCU variation of *Prochlorococcus* but for *Synechococcus*, selection dictates the SCU pattern. In the present study, ENC Vs GC_3 plots of chromatophore genes and genes of freshwater *S. elongatus* showed that majority of genes were clustered on or just below the expected curve as observed in the ENC Vs GC_3 plot of genes of *Prochlorococcus* genome (Yu et al. 2012). Whereas, only few genes of marine *Synechococcus* genome were lying on or just below the expected curve indicating the influence of some additional factors in framing codon usage patterns (Yu et al. 2012). Variation of factors influencing SCU patterns in fresh water *Synechococcus* sp. and marine *Synechococcus* sp. reveals that life pattern of organisms may diversify the factors contributing SCU variation even within the same genus, supported by the previous observation that evolution of microbe is very

often influenced either by environment or by life style (Botzman and Margalit 2011; Paul et al. 2010).

Putative optimal codons, detected in chromatophore and *S. elongatus* genome are of great importance as they improve expression of heterologous genes in host cells (Wang et al. 2013). Equilibrium between neutral mutational pressure and natural selection is important in maintaining the heterogeneity of codon usage among species (Sueoka 1988) and if significant correlation exists between GC_{12} and GC_3 , it can be assumed that codon usage pattern is mainly framed by mutational pressure and if no such correlation exists, translational selection would be the major force. In the present study, neutrality plot revealed significant correlations between GC_{12} and GC_3 of genes from chromatophore and genome of *S. elongatus*. Most of the 786 PCG of chromatophore and 2342 PCG of *S. elongatus* were grouped on the upper left of the neutrality plot. Slope of the regression line in both plots were not close to zero, indicating that influence of specific evolutionary pressure such as selection is weak. Thus, it can be proposed that mutational pressure is the key factor that shapes the codon usage pattern of both chromatophore and *S. elongatus* genome. Moreover, in PR2 bias plot of these two genomes, synonymous A, T and G, C contents were found to be used proportionally indicating the influence of GC compositional constraints. Interestingly, in the PS clade, significant correlation between GC_{12} and GC_3 was found only in *Prochlorococcus* (Yu et al. 2012). Thus, we can assume that freshwater *P. chromatophora* genome and

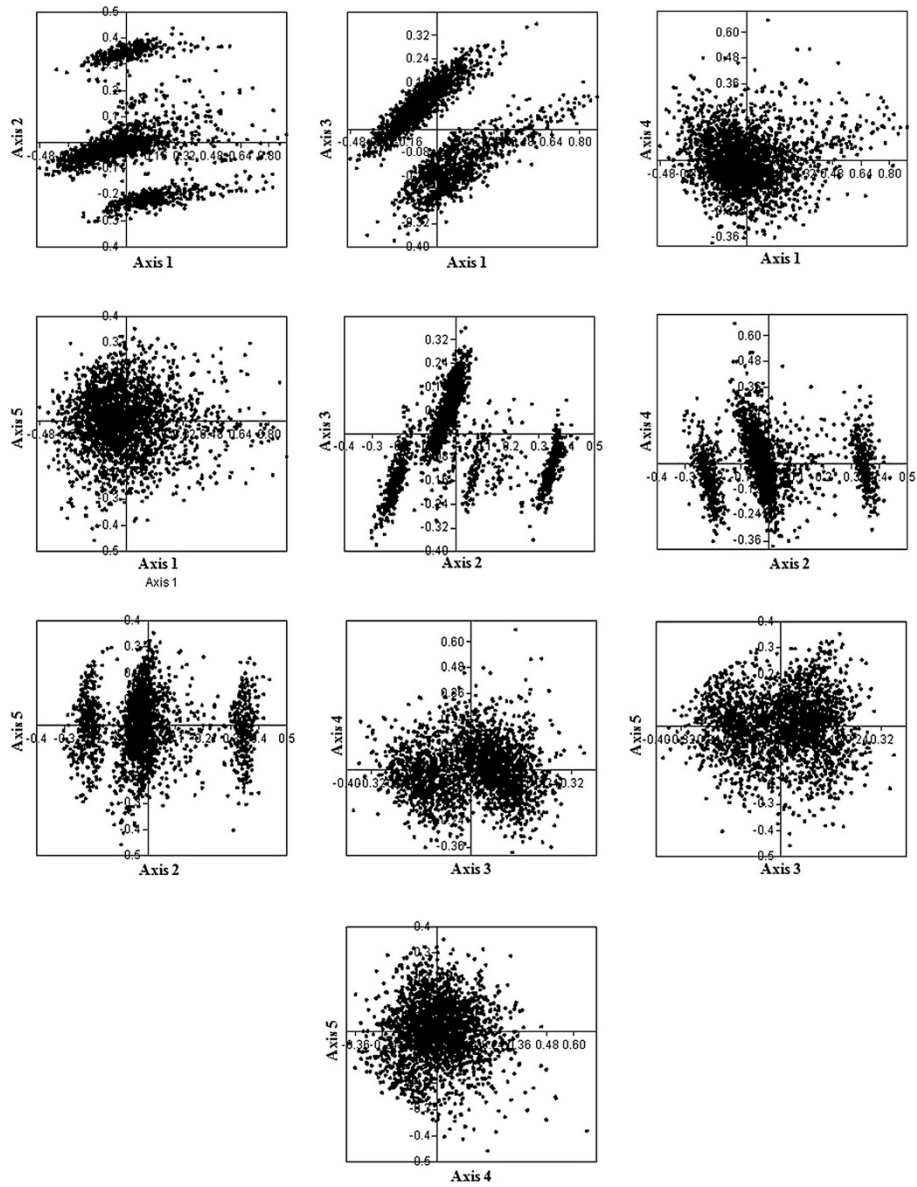


Figure 8 Correspondence analysis. Correspondence analysis on RSCU values of 2342 PCG in *S. elongatus*.

Table 8 Correlation analysis between COA axes and codon usage indices

Axes	A ₃	T ₃	G ₃	C ₃	GC ₃	ENC	CAI	Gravy score	Aromaticity	Length of CDS
Axis 1	0.616**	0.591**	-0.224**	-0.674**	-0.761**	0.588**	0.076**	-0.016	0.018	-0.050*
Axis 2	0.095**	0.086**	0.221**	-0.296**	-0.119**	0.138**	0.068**	0.063*	0.001	0.029
Axis 3	0.107**	0.212**	0.033	-0.025	-0.212**	0.076**	-0.086**	0.096**	0.003	-0.198**
Axis 4	0.053*	0.113**	-0.508**	0.267**	-0.090**	-0.023	0.016	-0.096**	0.065*	-0.137**
Axis 5	0.064*	-0.059*	0.168**	-0.143**	0.003	0.002	-0.036	0.017	0.040	0.044*

Correlation analysis between five different axes of COA and various codon usage indices of 2342 PCG in the cyanobacterial genome of *S. elongatus*.

Analysis was made using Spearman's rank correlation method.

*Figures are significant at $p \leq 0.01$ (one tailed).

**Figures are significant at $p \leq 0.001$ (one tailed).

S. elongatus genome are more similar to Marine *Prochlorococcus* than Marine *Synechococcus* in terms of factors that diversify SCU patterns.

Relationship between SCUO and GC₃ formed a 'U' shape with two horns in both genomes as reported in unicellular microorganisms (Wan et al. 2004) and it reveals the influence of GC₃ over SCU bias. In chromatophore genome, three axes of COA were found to show higher correlation with silent base contents, confirming the influence of genome wide compositional constraints. However, axes 1 and 4 were highly correlated with codon usage indices that indicate the level of gene expression such as ENC and CAI. Since there were no major explanatory axes, correlation with these indices cannot be linked with the influence of selection. Hydropathic character of protein (gravy score) was correlated with axes 2, 3 and 4 in *S. elongatus* genome, suggesting that silent sites may be affected by hydropathy levels of protein whereas in chromatophore genome, gravy score did not show any correlation with any of the axes of COA. Correlation between length of CDS and axes 1, 3 and 4 in *S. elongatus* genome indicate the influence of length of CDS in SCU variation but no such correlation was existed in *P. chromatophora*. In *S. elongatus* genome, negative correlation existed between GC₃ and first four axes of COA confirms the GC₃ consequence on SCU pattern. Indices indicating the level of gene expression such as ENC and CAI were correlated significantly with first three axes of COA reflect the weak selection may take part in SCU variation of *S. elongatus*. Formation of three clusters of PCG along axis 2 in *S. elongatus* genome indicating a trend associated with RSCU value of C ending codons, but not observed in chromatophore genome. Whereas in chromatophore genome, TGT and TGC codons (encoding Cys) influence separation of PCG along axis 2. Influence of Cys codons in shaping SCU pattern was already reported in *Lactococcus lactis* (Gupta et al. 2004) and *Rhizobium* (Wang et al. 2013). However, these results suggested that genome wide compositional constraints influence the SCU patterns of both chromatophore genome and *S. elongatus* genome.

SCU patterns of chromatophore genome of *P. chromatophora* and *S. elongatus* may be closely associated with living habitats. The adapted habitat of *P. chromatophora* is a submerged vegetation in freshwater. Mud loving nature of this organism protects it from potential extrinsic mutagens like UV-B radiation and which in turn causes genome wide mutation as reported in *Prochlorococcus* (Partensky et al. 1999). Freshwater β -cyanobacterium *S. elongatus* PCC6301 is less adaptive to varying environments as it resides strictly in euphotic zones, relatively with low nutrient contents at mesophilic temperature (Waterbury et al. 1986) unlike marine *Synechococcus* which is more adaptive to grow in varying nutrient conditions and temperatures (Moore

et al. 1998). To make marine *Synechococcus* more adaptive to environment, translational selection shapes the codon usage patterns (Yu et al. 2012) but mutational pressure frames codon usage in less adaptive fresh water *S. elongatus*. Closely related species, living in distinct environments may exhibit considerable genomic diversity (Paul et al. 2010) that lead to differences in factors behind diversification of SCU patterns. Mutational pressure was found to be the major factor, influencing SCU pattern across PCG in strictly thermophilic cyanobacterium *Thermosynechococcus elongatus* BP-1 (Prabha et al. 2012) which is less adaptive to other temperature ranges as growth of thermophiles is restricted to particular environment at specific temperature (Botzman and Margalit 2011). These reports support our finding that SCU pattern of *P. chromatophora* and *S. elongatus* is dictated by mutational pressure due to their less adaptation to varying environments.

Conclusions

SCU pattern of photosynthetic endosymbiont (chromatophore) and *S. elongatus* genome is dictated mainly by genome wide GC mutational pressure. Living habitats of *P. chromatophora* and *S. elongatus* may also be influencing the SCU variations across genes of both genomes. However, complete genome sequencing of α -cyanobacteria from cyanobium clade would help further to understand SCU pattern and factors contributing diversification of SCU in presumed ancestors of photosynthetic endosymbionts of *P. chromatophora*.

Methods

Gene sequences

Complete coding sequences (CDS) of chromatophore genome (Genbank: NC_011087.1) of *P. chromatophora* (Nowack et al. 2008) and genome (Genbank: AP008231) of *S. elongatus* (Sugita et al. 2007) were retrieved from NCBI and CYORF (Cyanobacterial gene annotation database) respectively. CDS integrity was confirmed by checking the presence of START codon at the beginning and STOP codon at the end of each codon without any internal stop codons. To minimize the sampling errors, CDS with more than 300 nucleotides were chosen for analysis (Zhou and Li 2009; Sablok et al. 2011). Duplicate sequences were identified and excluded from the data set. Thus, the final data set of chromatophore genome consists 786 coding sequences that contain 2, 61,350 codons and 7, 84,050 nucleotides, whereas final data set of genome of *S. elongates* contains 2342 coding sequences that contain 7, 74, 810 codons and 23, 24, 430 nucleotides.

Indices of codon usage

a) Relative synonymous codon usage (RSCU)

To infer the features of SCU variations across PCG in the chromatophore genome by not taking amino acid

compositional constraints into account, the RSCU values of all PCG were estimated according to Sharp et al. (1986).

b) Effective number of codons (ENC)

ENC is an index that is widely used for measuring the extent of synonymous codon usage bias (Wright 1990). It can take values from 20 (only one codon is used for each of the 20 aminoacids) to 61 (when all synonymous codons are equally used). If the calculated ENC value is beyond 61 due to more even distribution of codon usage, it is adjusted to 61 (Wright 1990). Selection of preferred codons and mutational pressures may reduce the ENC values. The expected ENC under random codon usage is approximated as a function of GC_3 and calculated according to Wright (1990).

c) Codon adaptation index (CAI)

Codon adaptation index (CAI) is a measure of bias towards preferred codons in a PCG by defining the translationally optimal codons that are mostly represented in a reference set of highly expressed genes (Sharp and Li 1987). CAI value ranges from zero to one. Higher value indicates increased bias towards preferred codons. For this study, we used ribosomal protein coding genes as reference for estimating CAI values on the basis of equation, developed by Sharp and Li (1987).

d) Synonymous codon usage order (SCUO)

Synonymous codon usage order measurement was used to analyze the influence of GC composition at various codon positions on SCU. SCUO was computed using the following equation (Wan et al. 2004),

$$SCUO = 1 + \frac{p}{2} \log_2 \left(\frac{p}{2} \right) + \left\{ \frac{1-p}{2} \right\} \log_2 \left\{ \frac{1-p}{2} \right\}$$

$$p = GC_3$$

Sequence analysis

Nucleotide contents of all PCG were calculated using MEGA version 5.1 (Tamura et al. 2011). ENC values and CAI were calculated for all PCG by using online CodonW (<http://codonw.sourceforge.net>) and CAI calculator 2 (Wu et al. 2005). SCUO was computed using standalone CodonO (Wan et al. 2004).

Correspondence analysis (COA)

COA is a multivariate statistical method used to identify major factors, shaping SCU patterns across genes and plot genes according to various influencing factors of SCU (Perriere and Thioulouse 2002). Multivariate statistical analysis method was often employed to plot

PCGs according to RSCU values of the 59 synonymous codons (excluding 3 stop codons, Trp and Met codons) (RoyChoudhury and Mukherjee 2010). COA develops a series of orthogonal axes to define the major factors that frame the SCU patterns in accordance with the variation of data. In this study, complete coding regions of each PCG were represented as a 59 dimensional vector (excluding Met, Trp and stop codons). Each dimension corresponds to RSCU value of one sense codon (Mardia et al. 1979).

Statistical analysis

All correlations were made using Spearman's rank correlation method as this measure of correlation does not require any distributional assumptions of the underlying data (Zhou and Li 2009). A Chi - square test involving 2×2 table was employed for 5% of genes distributed at extreme left and 5% of genes distributed at extreme right of axis 1 of COA to find out putative optimal codons. For each of 59 sense codons, First row contains the observed frequency of a codon and the second row contains total number of synonymous alternatives of that particular codon. The significance was calculated at the 5% level with one degree of freedom. All these analyses were done using Past version 2.12 (Hammer et al. 2001).

Abbreviations

PCGs: Protein coding genes; RSCU: Relative synonymous codon usage; SCU: Synonymous codon usage; ENC: Effective number of codon usage; CAI: Codon adaptation index; SCUO: Synonymous codon usage order; PR2: Parity rule 2; GC_3 : GC content at 3rd codon position; GC_{12} : GC content at first and second position; COA: Correspondence analysis.

Competing interests

Authors declare that they have no competing interest.

Authors' contributions

RRN and GD conceptualized the study. RRN, TS and MBN performed data analyses. RRN and GD were involved in drafting the manuscript. All authors read and approved the final manuscript.

Acknowledgements

All the authors wish to acknowledge Department of Science and Technology (Promotion of University Research and Scientific Excellence), Government of India, New Delhi, India for financial assistance. Part of the financial assistance was provided by University Grants Commission, New Delhi under the project 'Establishment of genetic identity for Indian coffee germplasm using chloroplast genome sequences' (F.No.41-583/2012 (SR).

Author details

¹Department of Biotechnology, Vignana University, Vadlamudi, 522 213, Guntur, Andhra Pradesh, India. ²Department of Plant Biotechnology, School of Biotechnology, Madurai Kamaraj University, Palkalai Nagar, 625 021, Madurai, Tamil Nadu, India.

Received: 26 June 2013 Accepted: 27 September 2013

Published: 30 September 2013

References

Agashe D, Gomez NCM, Drummond DA, Marx CJ (2013) Good codons, bad transcript: large reductions in gene expression and fitness arising from synonymous mutations in a key enzyme. *Mol Biol Evol* 30:549–560, 10.1093/molbev/mss273

- Akashi H (1995) Inferring weak selection from patterns of polymorphism and divergence at silent sites in *Drosophila* DNA. *Genetics* 139:1067–1076
- Akashi H (2001) Gene expression and molecular evolution. *Curr Opin Genet Dev* 11:660–666
- Biro JC (2008) Does codon bias have an evolutionary origin? *Theor Biol Med Mode* 5:1–15
- Bodyl A, Mackiewicz P, Stiller JW (2007) The intracellular cyanobacteria of *Paulinella chromatophora*: endosymbionts or organelles? *Trends Microbiol* 15:295–296
- Botzman M, Margalit H (2011) Variation in global codon usage bias among prokaryotic organisms is associated with their lifestyles. *Genome Biol*, 10.1186/gb-2011-12-10-r109
- Bulmer M (1991) The selection-mutation-drift theory of synonymous codon usage. *Genetics* 129:897–907
- Carlini DB, Chen Y, Stephan W (2001) The relationship between third-codon position nucleotide content, codon bias, mRNA secondary structure and gene expression in the drosophilid alcohol dehydrogenase genes *Adh* and *Adhr*. *Genetics* 159:623–633
- Chan CX, Gross J, Yoon HS, Bhattacharya D (2011) Plastid origin and evolution: new models provide insights into old problems. *Plant Physiol* 155:1552–1560
- Deschavanne I, Filipiski J (1995) Correlation of GC content with replication timing and repair mechanisms in weakly expressed *E. coli* genes. *Nucleic Acids Res* 23:1350–1353
- Drummond DA, Wilke CO (2008) Mistranslation - induced protein misfolding as a dominant constraint on coding-sequence evolution. *Cell* 134:341–352
- Ermolaeva MD (2001) Synonymous codon usage in bacteria. *Curr Issues Mol Biol* 3:91–97
- Grantham R, Gautier C, Gouy M, Mercier R, Pavé A (1980) Codon catalog usage and the genome hypothesis. *Nucleic Acids Res* 8:49–62
- Gupta SK, Bhattacharya TK, Ghosh TC (2004) Synonymous codon usage in *Lactococcus lactis*: mutational bias versus translational selection. *J Biomol Struct Dyn* 21:527–536
- Hammer Q, Harper DAT, Ryan PD (2001) PAST: paleontological statistics software package for education and data analysis. *Palaeontol Electron* 4:1–9
- Hershberg R, Petrov DA (2008) Selection on codon bias. *Annu Rev Genet* 42:287–299
- Ikemura T (1982) Correlation between the abundance of yeast tRNAs and the occurrence of the respective codons in its protein genes. *J Mol Biol* 158:573–579
- Ikemura T (1985) Codon usage and tRNA content in unicellular and multicellular organisms. *Mol Biol Evol* 2:13–34
- Irwin B, Heck JD, Hatfield GW (1995) Codon pair utilization the biases influence translational elongation step times. *J Biol Chem* 270:22801–22806
- Karlin S, Mrazek J, Campbell AM (1998) Codon usages in different gene classes of the *Escherichia coli* genome. *Mol Microbiol* 29:1341–1355
- Kurland CG (1993) Major codon preference theme and variations. *Biochem Soc T* 21:841–846
- Mardia KV, Kent JT, Bibby JM (1979) *Multivariate analysis*. Academic, New York
- Marin B, Nowack ECM, Melkonian M (2005) A plastid in the making: evidence for a secondary primary endosymbiosis. *Protist* 156:425–432
- Marin B, Nowack ECM, Glockner G, Melkonian M (2007) The ancestor of the *Paulinella chromatophore* obtained a carboxysomal operon by horizontal gene transfer from a *Nitrococcus*-like γ -proteobacterium. *BMC Evol Biol*, 10.1186/1471-2148-7-85
- Moore LR, Roca G, Chisholm SW (1998) Physiology and molecular phylogeny of coexisting *Prochlorococcus* ecotypes. *Nature* 393:464–467
- Moriyama EN, Powell JR (1997) Codon usage bias and tRNA abundance in *Drosophila*. *J Mol Evol* 45:514–523
- Morton BR (1993) Chloroplast DNA codon use: evidence for selection at the *psbA* locus based on tRNA availability. *J Mol Evol* 37:273–280
- Morton BR (1997) Rates of synonymous substitution do not indicate selective constraints on the codon use of the plant *psbA* gene. *Mol Biol Evol* 14:412–419
- Morton BR (1998) Selection on the codon bias of chloroplast and cyanelle genes in different plant and algal lineages. *J Mol Evol* 46:449–459
- Nair RR, Nandhini MB, Monalisha E, Murugan K, Sethuraman T, Nagarajan S, Rao NSP, Ganesh D (2012) Synonymous codon usage in chloroplast genome of *Coffea arabica*. *Bioinformatics* 8:1096–1104
- Nowack ECM, Melkonian M, Glockner G (2008) Chromatophore genome sequence of *Paulinella* sheds light on acquisition of photosynthesis by eukaryotes. *Curr Biol* 18:410–418
- Parmley JL, Hurst LD (2007) How do synonymous mutations affect fitness? *Bioessays* 29:515–519
- Partensky F, Hess WR, Vaulot D (1999) *Prochlorococcus*, a marine photosynthetic prokaryote of global significance. *Microbiol Mol Biol Rev* 63:106–127
- Paul S, Dutta A, Bag SK, Das S, Dutta C (2010) Distinct, ecotype-specific genome and proteome signatures in the marine cyanobacteria *Prochlorococcus*. *BMC Genomics*, 10.1186/1471-2164-11-103
- Perriere G, Thioulouse J (2002) Use and misuse of correspondence analysis in codon usage studies. *Nucleic Acids Res* 30:4548–4555
- Plotkin JB, Kudla G (2011) Synonymous but not the same: the causes and consequences of codon bias. *Nat Rev Genet* 12:32–42
- Prabha R, Singh DP, Gupta SK, Farooqi S, Rai A (2012) Synonymous codon usage in *Thermosynechococcus elongatus* (cyanobacteria) identifies the factors shaping codon usage variation. *Bioinformatics* 8:622–628
- RoyChoudhury S, Mukherjee D (2010) A detailed comparative analysis on the overall codon usage pattern in herpesviruses. *Virus res* 148:31–43
- Sablok G, Nayak KC, Vazquez F, Tatarinova TV (2011) Synonymous codon usage, GC3, and evolutionary patterns across plastomes of three pooid model species: emerging grass genome models for monocots. *Mol Biotechnol* 49:116–128
- Sarmer WT, Sullivan DT (1989) A shift in the third-codon-position nucleotide frequency in alcohol dehydrogenase genes in the genus *Drosophila*. *Mol Biol Evol* 6:546–552
- Selva KC, Nair RR, Sivaramkrishnan KG, Ganesh D, Janarthanan S, Arunachalam M, Sivaruban T (2012) Influence of certain forces on evolution of synonymous codon usage bias in certain species of three basal orders of aquatic insects. *Mitochondr DNA* 23:447–460
- Sharp PM, Cowe E (1991) Synonymous codon usage in *Saccharomyces cerevisiae*. *Yeast* 7:657–678
- Sharp PM, Li WH (1987) The codon adaptation index - a measure of directional synonymous codon usage bias, and its potential applications. *Nucleic Acid Res* 15:1281–1295
- Sharp PM, Tuohy TMF, Mosurski KR (1986) Codon usage in yeast: cluster analysis clearly differentiates highly and lowly expressed genes. *Nucleic Acids Res* 14:8207–8211
- Sharp PM, Averof M, Lloyd AT, Matassi G, Peden JF (1995) DNA sequence evolution: the sounds of silence. *Phil Trans R Soc B* 349:241–247
- Smith MJ, Smith NH (1996) Site - specific codon bias in bacteria. *Genetics* 142:1037–1043
- Sueoka N (1988) Directional mutation pressure and neutral molecular evolution. *Proc Natl Acad Sci USA* 85:2653–2657
- Sugita C, Ogata K, Shikata M, Jikuya H, Takano J, Furumichi M, Kanehisa M, Omata T, Sugiura M, Sugita M (2007) Complete nucleotide sequence of the freshwater unicellular cyanobacterium *Synechococcus elongatus* PCC 6301 chromosome: gene content and organization. *Photosynth Res* 93:55–67
- Tamura K, Peterson D, Peterson N, Steker G, Nei M, Kumar S (2011) MEGA5: molecular evolutionary genetics analysis using maximum likelihood, evolutionary distance, and maximum parsimony methods. *Mol Biol Evol* 28:2731–2739
- Wall DP, Herback JT (2003) Evolutionary patterns of codon usage in the chloroplast gene *rbcL*. *J Mol Evol* 56:673–688
- Wan XF, Xu D, Kleinhofs A, Zhou J (2004) Quantitative relationship between synonymous codon usage bias and GC composition across unicellular genomes. *BMC Evol Biol*, 10.1186/1471-2148-4-19
- Wang X, Zhu S, Zhao L, Wu L, An W, Zhou P, Chen Y (2013) Analysis of synonymous codon usage patterns in the genus *Rhizobium*. *World J Microbiol*, 10.1007/s11274-013-1364-7
- Waterbury JB, Watson SW, Valois FW, Franks DG (1986) Biological and ecological characterization of the marine unicellular cyanobacterium *Synechococcus*. *Can B Fish Aquat Sci* 214:71–120
- Wright F (1990) The "effective number of codons" used in a gene. *Gene* 87:23–29
- Wu G, Culley DE, Zhang W (2005) Predicted highly expressed genes in the genomes of *Streptomyces coelicolor* and *Streptomyces avermitilis* and the implications for their metabolism. *Microbiol* 151:2175–2187
- Yang Z, Nielsen R (2008) Mutation-selection models of codon substitution and their use to estimate selective strengths on codon usage. *Mol Biol Evol* 25:568–579

- Yoon HS, Prieto A, Melkonian M, Bhattacharya D (2006) Minimal plastid genome evolution in the *Paulinella* endosymbionts. *Curr Biol* 16:670–672
- Yu T, Li J, Yang Y, Qi L, Chen B, Zhao F, Bao Q, Wu J (2012) Codon usage patterns and adaptive evolution of marine unicellular cyanobacteria *Synechococcus* and *Prochlorococcus*. *Mol Phylogenet Evol* 62:206–213
- Zhou M, Li X (2009) Analysis of synonymous codon usage patterns in different plant mitochondrial genomes. *Mol Biol Rep* 36:2039–2046

doi:10.1186/2193-1801-2-492

Cite this article as: Nair *et al.*: Mutational pressure dictates synonymous codon usage in freshwater unicellular α - cyanobacterial descendant *Paulinella chromatophora* and β - cyanobacterium *Synechococcus elongatus* PCC6301. *SpringerPlus* 2013 2:492.

Submit your manuscript to a SpringerOpen[®] journal and benefit from:

- Convenient online submission
- Rigorous peer review
- Immediate publication on acceptance
- Open access: articles freely available online
- High visibility within the field
- Retaining the copyright to your article

Submit your next manuscript at ► springeropen.com
